



2018 / 2019

MAST YOUNG PLANTS *MAKING YOU PRIORITY*





WELCOME

From left to right:

3rd Row:

Noah Schwartz, Brian Weesies, Michael DeBerti, Zack Kruyf, Kevin Halonen, Tyler Duncan

2nd Row:

Candy Novenske, Dawn Eardley, Danny Melville, Tara VanHouten, Albertano Hernandez, Noe Ramos, Jesus Martinez

1st Row:

Angie Lucas, Shelley Paulsen, Joyce Bowen, Carolyn McCarty

For over 10 years, our team of growers has been dedicated to developing, growing and selecting the best varieties available from the world's finest breeders.

It's time to meet what's new and what's next at MYP, so let's discover the latest program thriving in the greenhouse at Mast Young Plants.

This year, the perfect line-up is waiting. This year, we're making you priority.

Visit our website to find more info including live availability, cultural information, growing tips, and photos.

www.mastyoungplants.com



deer resistant

Research demonstrates these varieties to be less desirable to deer, and therefore more desirable to customers seeking deer-resistant ornamental annuals.



season extenders

What plants perform best in summer's heat? These will! Because we grow every plant offered in our catalog in our trial gardens all summer long, we're confident recommending these season extenders.



myp best seller

These varieties are top sellers and ones that you can feel confident will do well for you too!



new

What's new? These are! These plants performed so well in our trials that we're offering them to you in our catalog this year!



small pots

These varieties can be grown pot tight on the bench for high density production.



mounding hanging baskets

These varieties grow slightly more upright and mounding, producing baskets which do not require sleeving.



trailing hanging baskets

These varieties grow more prostrate and will spill down over the edge of the pot. Ideal for large premium baskets which trail down.



like us please!

What's not to like? Check us out on Facebook.



follow us!

We post images weekly on Instagram.

CONTENTS

| | |
|-----------------------|-----|
| Our Living Catalog | 2 |
| The Complete Package | 4 |
| Ordering + Shipping | 6 |
| Availability | 7 |
| Broker List | 7 |
| Prefinished 1801 | 8 |
| Annuals | 10 |
| Mast Fusion | 102 |
| Combos | 104 |
| Foliage | 120 |
| Grasses | 122 |
| Herbs | 124 |
| Greenfuse Perennials | 126 |
| Perennials | 128 |
| Succulents | 138 |
| Vines | 140 |
| Summer + Fall Liners | 142 |
| Drop-replacement List | 144 |
| Plant Index | 145 |



OUR LIVING CATALOG

Experience Grand Rapids, Michigan and discover our “Living Catalog” where we’ve filled our landscape beds with bold colors and textures featuring some of the hottest new varieties on the market and all the plants that inspire us. The Mast Young Plants Trial Garden includes all varieties offered in our liner program from over 25 of the industry’s leading breeders and marketers. Take a day trip to come explore the best-performing plants, container garden ideas, and compare products in an exciting and innovative display.

Our 2018 Trial garden features over 100 genera, including 200+ new variety additions, 1200+ varieties, 400+ combination planter pots, 20 raised beds, and the AAS trials grown by MYP’s Innovating Team down in our lower garden.



Highlights: We’ve lined up the world’s best mum breeders to expand our second annual shaded mum trial. Featuring more than 100 current and new varieties, representatives will be presenting at our garden August 2, 2018.

Due to high demand, our expanded lower garden will feature blind trials that are no longer blind! Discover new and exciting plants to be released in 2019 along with a beautiful display of sun/shade verberna and coleus.

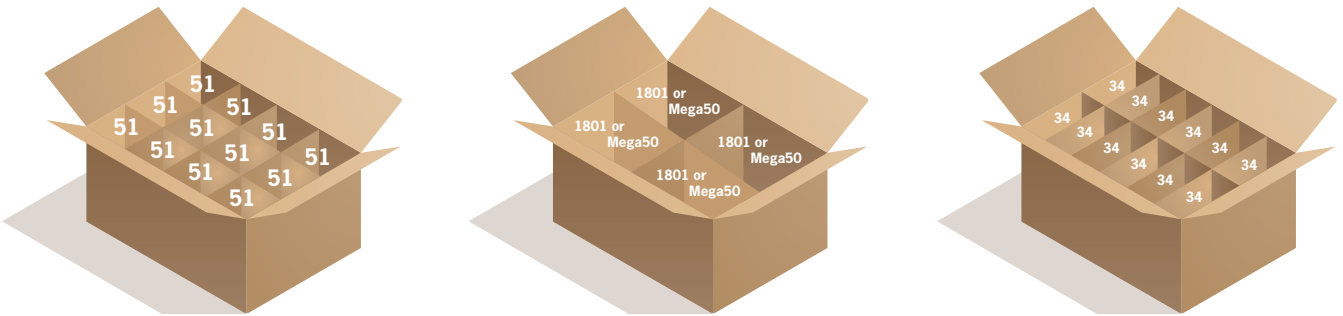
We offer shaded seating and meeting space areas with wireless internet and a knowledgeable, helpful staff that is eager to welcome you and assist you with any questions.



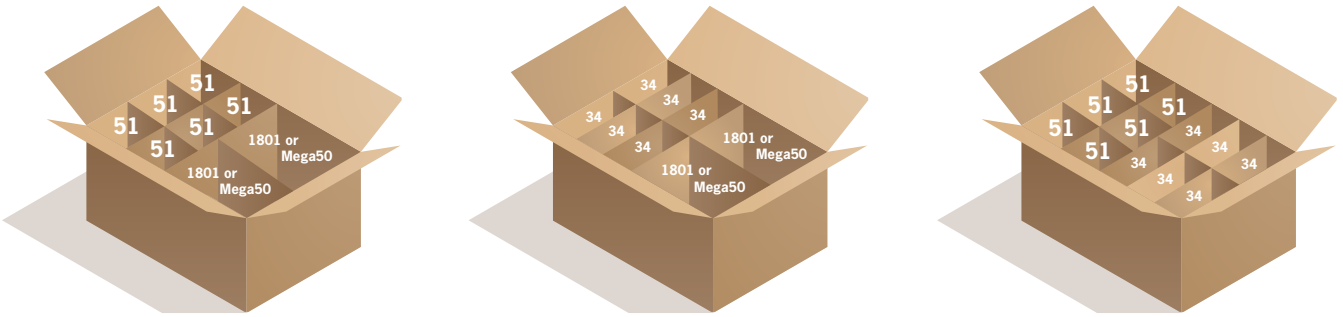
THE COMPLETE PACKAGE

THE STANDARD BOX Packaging Specs

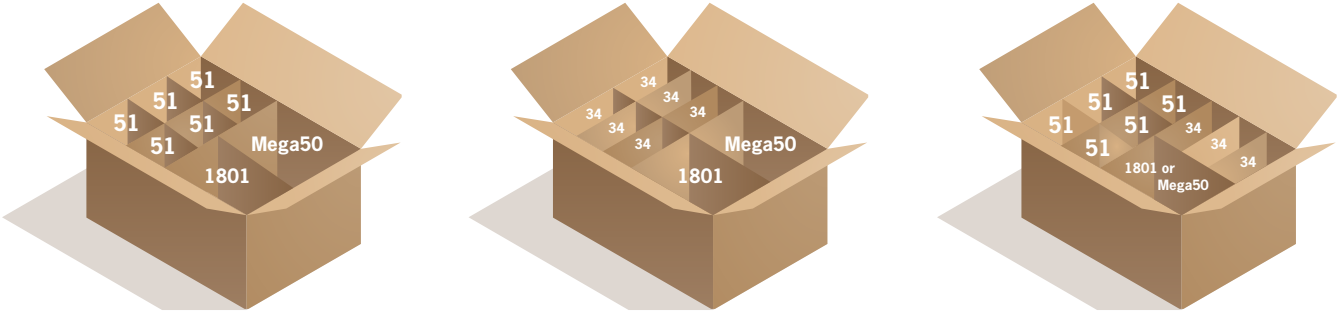
1 standard box filled with 1 tray size



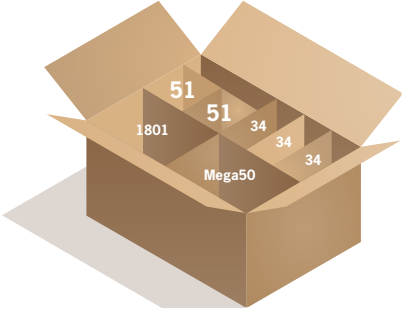
1 standard box filled with 2 different tray sizes



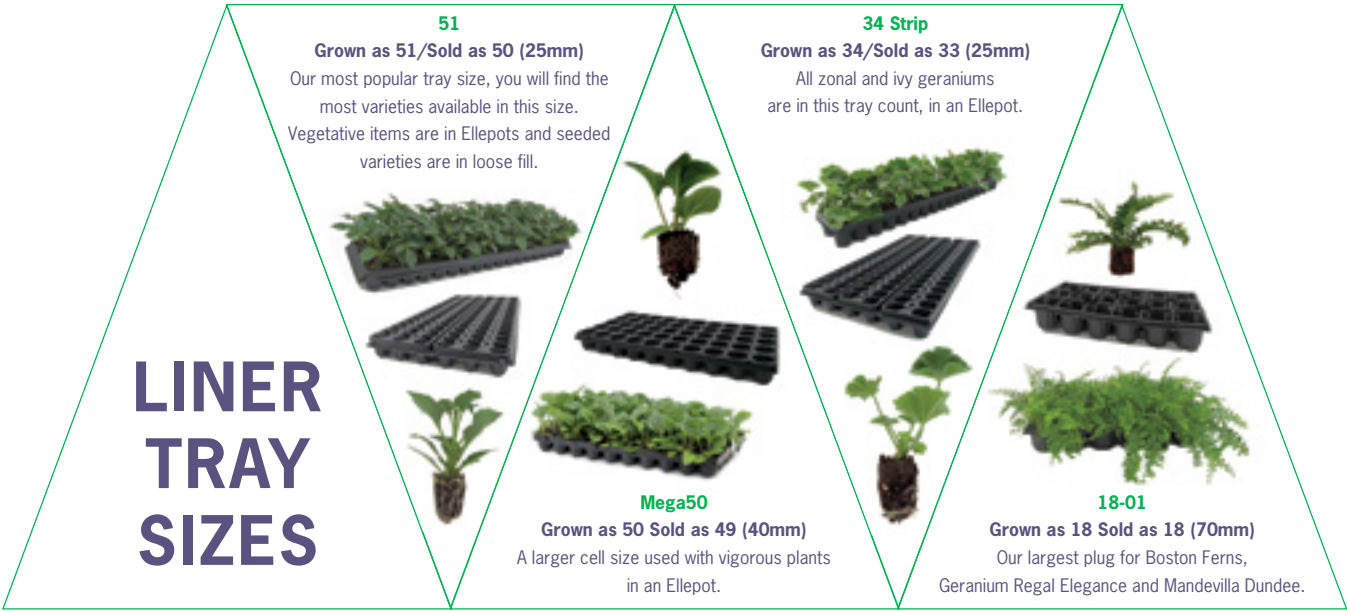
1 standard box filled with 3 different tray sizes



1 standard box filled with 4 different tray sizes

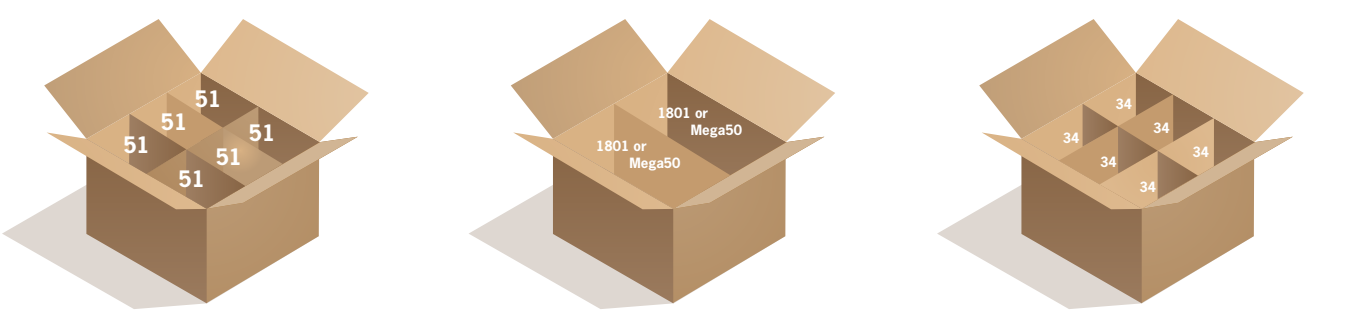


| Standard boxes billed by box, not by tray! | | | | |
|--|----|----------------|---|---------|
| 25.5"L x 23"W x 14"H | | | | |
| Mega50 or 1801 | | 34 Strip Trays | | 51 Tray |
| 4 | or | 12 | + | 0 |
| 3 | or | 9 | + | 2 |
| 2 | or | 6 | + | 6 |
| 1 | or | 3 | + | 8 |
| 0 | or | 0 | + | 12 |

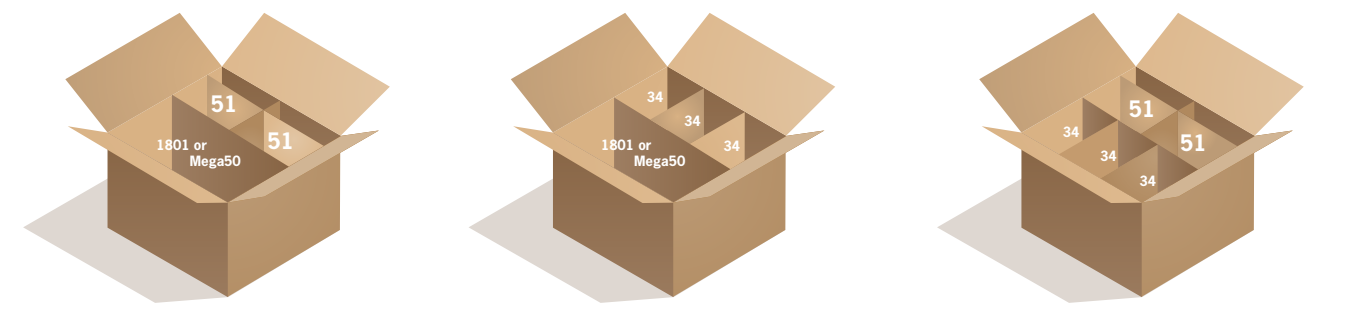


THE HALF BOX Packaging Specs

1 Half box filled with 1 tray size



1 Half box filled with 2 different tray sizes

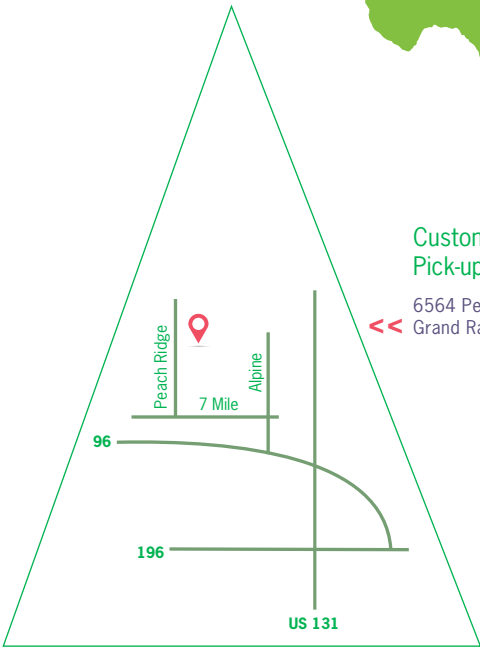
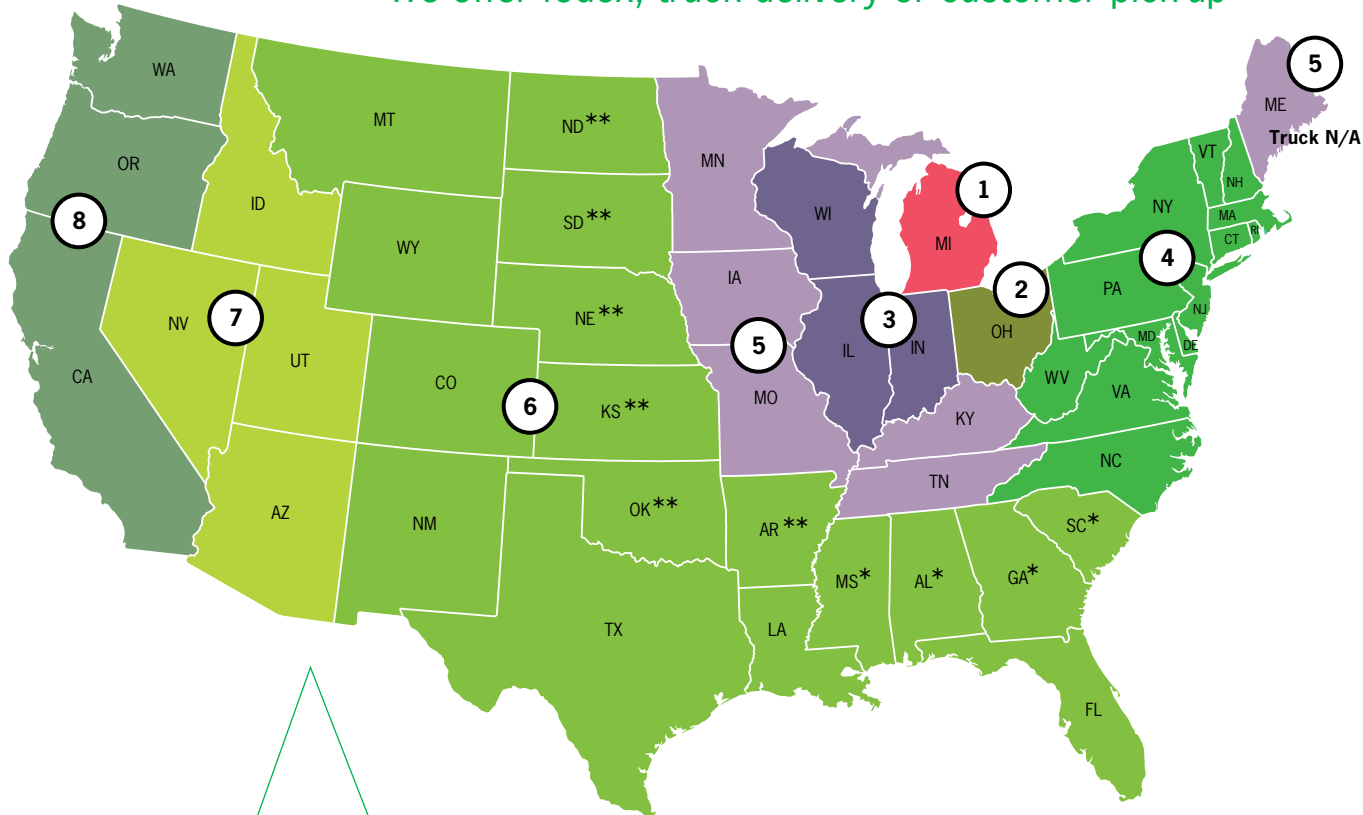


| Half boxes billed by box, not by tray! | | | | |
|--|----|----------------|---|---------------|
| 23"L x 13.5"W x 14.25"H | | | | |
| Mega50 or 1801 | | 34 Strip Trays | | 51 Tray |
| 2 | or | 6 | + | 0 |
| 1 | or | 3 | + | 2 |
| 0 | or | 0 | + | 6 |
| 6.25" inserts | | 6.25" inserts | | 4.25" inserts |



ORDERING AND SHIPPING

We offer fedex, truck delivery or customer pick-up



Ordering Guidelines

Truck Delivery Orders

Order deadline is Wednesday 12:00 PM (noon) EST, prior to ship week.

Truck Delivery Schedule

Zone 1, 3 & 5 (except Maine): odd weeks 5, 7, 9, 11, 13
Zone 2 & 4: even weeks 4, 6, 8, 10, 12, 14
Zone 6: *SC, GA, AL, MS – weeks 8 and 10
Zone 6: **AR, OK, KS, NE, SD, ND – weeks 9 and 11

Minimum of 50 trays for truck delivery (100-51 strip trays, 150-geranium 34 strip trays, 50-1801 or Mega50 trays).

Truck orders may be boxed to protect plants while unloading.

Federal Express Orders

Order deadline is Friday, 6:00 AM EST, prior to ship week.
FedEx 1 Day or 2 Day service for Half & Standard box.

Customer Pick-up

Order deadline is Friday, 6:00 AM EST, prior to ship week.

Mast Young Plants will contact the customer directly to arrange their pick up day.

Customer pick up days are Tuesday and Wednesday.

Weeks 7-13 pick up days are Wednesday and Thursday.

Spot Orders

Order deadline is Saturday, 12:00 PM (noon) EST, prior to ship week.

Spot orders will be shipped as a separate order and cannot be combined with regular orders.

FedEx 1 or 2 Day service only.

Availability

The following items have limited availability:

| Genera | Variety | Liner Size | Available Beginning |
|----------------|--|------------|---------------------|
| Begonia | Elatior, Solenia, Interspecific l'Conia | 51 | weeks 1-19 |
| Begonia Exotic | Bossa Nova, Gryphon | Mega 50 | week 1 |
| Begonia | Hybrid, Tuberous | Mega 50 | week 1 |
| Calceolaria | All | 51 | week 1 |
| Croton | Mamey, Petra | 1801 only | week 1 |
| Cymbopogon | Lemon Grass | 51 | week 1 |
| Dianthus | Kahori, Oscar, SuperTroupier | 51 | weeks 45-10 |
| Dianthus | Jolt, Rockin' Red | 51 | week 1 |
| Echinacea | Cheyenne Spirit and PowWow Wild Berry | 51 | week 1 |
| Euphorbia | Glitz | 51 | week 1 |
| Fern | True Boston | 1801 only | week 40 |
| Foliage | Dracaena marginata, Spider Plant | Mega 50 | week 1 |
| Geranium | Ivy Great Balls of Fire, Zonal Patriot & Novelty Brocade | 34 Strip | weeks 1-19 |
| Geranium | Regal Elegance (pre-cooled) | 1801 only | weeks 2-10 |
| Gerbera | Cartwheel, Mega Revolution & Revolution | Mega 50 | week 1 |
| Grass | Pennisetum setaceum Fireworks, Rubrum & Skyrocket | Mega 50 | week 1 |

Broker List

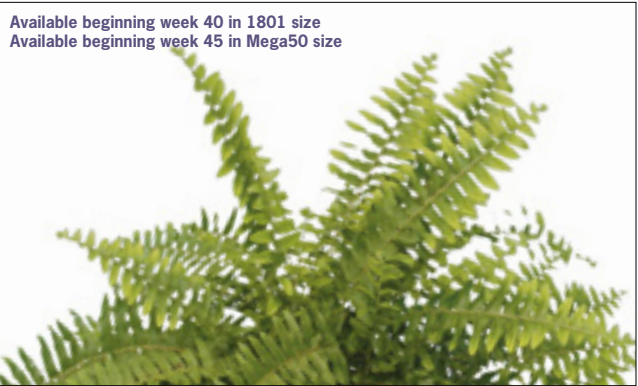
| | | | |
|-------------------------------|--------------|--|--------------|
| Ball Horticultural Company | 800-879-2255 | Harris Seed | 800-544-7938 |
| Ball Superior Ltd. | 905-893-7101 | Henry F. Michell Company | 800-422-4678 |
| BFG Plant Connection | 800-883-0234 | McHutchison | 800-943-2230 |
| Carlin Horticultural Supplies | 800-657-0745 | M&M Flowers | 260-301-1793 |
| Eason Horticultural Resources | 800-214-2221 | Messick Company LLC | 408-871-9816 |
| Express Seed Company | 800-221-3838 | Mid Atlantic Plant Company | 302-366-0349 |
| Florasource Ltd. | 949-498-1131 | Park Seed Wholesale (JPPA) | 800-845-3366 |
| ForemostCo | 800-421-8986 | Soos Grower Resources LLC | 269-795-7890 |
| Fred C. Gloeckner & Company | 800-345-3787 | Vandenberg Bulb Company | 800-955-3813 |
| Germania Seed Company | 800-380-4721 | Vaughan's Horticulture | 855-864-3300 |
| Griffin | 800-323-7253 | Vis Seed | 626-445-1233 |
| G. S. Grimes Seed Company | 800-241-7333 | Western Horticultural Products (WeHoP) | 800-669-6480 |



P R E F I N I S H E D
1 8 0 1

Foliage

| | |
|---|------------|
| 1801 | |
| An array of color and texture for single pot production | |
| Great as accents in combo pots | |
| Available beginning week 1 | Collection |



Boston Fern (Mega50 & 1801)
upright, 18–24"

Croton

| | |
|--|------------|
| 1801 | |
| Amazing green, yellow, red and purple leaves | |
| Indoor or outdoor applications | |
| Gives your combinations a tropical feeling | |
| Available beginning week 1 | Collection |



Mamey
upright, 14–18"



Petra
upright, 16–20"

Geranium Regal Elegance

| | |
|--|---------------|
| 1801 | Pinched |
| Self branching, durable upright foliage that does well in full sun | |
| Pre-cooled | |
| Available weeks 2-10 | Dummen Orange |



Ballet
upright



Bravo
upright



Imperial
upright



Purple Majesty
upright



Rose Bicolor
upright



Royalty White
upright

Mandevilla Dundee

| | |
|--|---------|
| 1801 | Pinched |
| Strong plants with vivid non-fading flowers | |
| New prefinished program - let us put the heat and time into this item for you! | |
| | Selecta |



Pink
trailing/climbing, 24–48"



Red
trailing/climbing, 24–48"



Acalypha

| | |
|--|---------|
| 51 | Pinched |
| Also called Chenille Plant or Red Cattail | |
| Compact growth with bright red flowers | |
| Ideal for combination planters and baskets | |

Collection



Chenille Red
trailing, 12–24”

Ageratum Aguilera™

| |
|--|
| 51 |
| Mounding habit that is compact and well controlled with dark green foliage |
| Ideal for containers |



Danziger



Purple
mounding, 12–18”

Alternanthera

| |
|---|
| 51 |
| Grown for the colorful foliage |
| Makes a great companion plant in combinations |
| Ideal for baskets and containers |

Collection



Brazilian Red Hots
upright, 12–18”



Burgundy Threadleaf
mounding, 8–12”



Little Ruby
mounding, 10–18”



True Yellow
mounding, 6–12”

Angelonia Alonia™

| |
|---|
| 51 |
| Fast growing and heat tolerant |
| Great branching habit with tons of large blooms |
| Excellent garden performance |
| Full sun |



Danziger



Big Blue
upright mounding, 14–18”



Big Indigo
upright mounding, 14–18”

Angelonia Carita™

| |
|---|
| 51 |
| Caritas have large flowers on strong stems - upright habit |
| Flowers continuously throughout the season with good heat tolerance |
| Ideal for landscape and container planters |



Syngenta



Purple
upright, 16–20”



Raspberry
upright, 16–20”



White
upright, 16–20”

Angelonia Angelos®

| |
|--|
| 51 |
| Early variety that finishes large in the landscape |

Collection



Bicolor
upright, 14–18”

Angelonia Carita™ Cascade

| |
|--|
| 51 |
| Carita Cascade has a unique semi-trailing growth habit |
| Continuous flowering throughout the season |
| Superb heat tolerance |
| Ideal for hanging baskets and large container planters |

Syngenta



Cascade Deep Purple
semi-trailing, 8–10”



Cascade Raspberry
semi-trailing, 8–10”

Argyranthemum Beauty

| |
|-------------------------------------|
| 51 |
| Early yellow medium size flower |
| Compact habit, ideal for small pots |
| Our earliest blooming Argyranthemum |

Westhoff

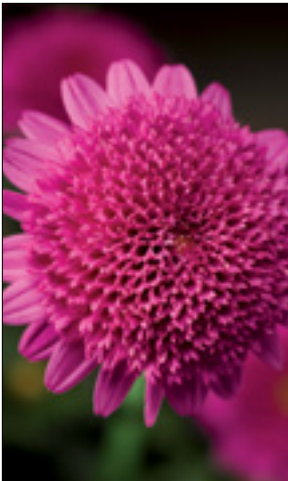


Yellow
upright, 20–32”

Argyranthemum Sassy®

| |
|---|
| 51 |
| Bred for excellent branching and very early flowering |
| Mounded plant loaded with daisy-like flowers |
| Ideal for mixed containers and combination planters |

Syngenta



Double Deep Rose
mounding, 10–14”



Double Yellow
mounding, 10–14”



Red
mounding, 10–14”



Rose
mounding, 10–14”



White
mounding, 10–14”

Asparagus Fern

| |
|---|
| 51 |
| Tender perennial with arching feather-like stems |
| Deep green foliage with tapered foxtail-like spikes |
| Ideal accent in pots, combination planters, and hanging baskets |
| Multi seeds per cell |

Collection



sprengeri
upright, 18–24”

Bacopa Atlas™

| | |
|---|---------|
| 51 | Pinched |
| Atlas boasts extra large, clean white flowers on a mounded trailing plant habit | |
| One of the most heat tolerant bacopas | |
| Great in containers and combination hanging baskets | |

Dummen Orange



White
mounding trailing, 6–8”

Bacopa Calypso™

| | |
|---------------------------|---------|
| 51 | Pinched |
| Easy to grow | |
| Controlled trailing habit | |
| Jumbo flowers | |

Syngenta



Jumbo Deep Lavender
trailing, 4–6” 2 cuttings per cell



Jumbo Lilac
trailing, 4–6” 2 cuttings per cell



Jumbo Pink Eye
trailing, 4–6” 2 cuttings per cell



Jumbo Rose
trailing, 4–6” 2 cuttings per cell



Jumbo White Imp
trailing, 4–6”

Bacopa Scopia®

| | |
|--|---------|
| 51 | Pinched |
| Early flowering with large color-rich blooms | |
| Ideal for hanging baskets and mixed containers | |
| Full sun - part shade | |

Danziger



Double Indigo
semi-trailing, 6–8”



Double Snowball
semi-trailing, 6–8”



Gulliver Blue
trailing, 4–6” 2 cuttings per cell



Gulliver Pink
trailing, 4–6” 2 cuttings per cell



Gulliver White
trailing, 4–6”

Begonia Elatior

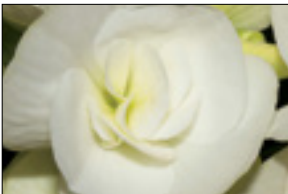
| | |
|---|------------|
| 51 | |
| All varieties are easily adapted to year-round production | |
| Long-blooming plants both in pots and in the garden | |
| Ideal for beds, containers, and in baskets | |
| Available beginning week 1 | Collection |



Blitz (yellow)
upright, 10–12"



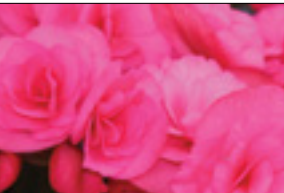
Carneval (orange yellow)
upright, 8–10"



Clara (white)
upright, 8–10"



Dark Britt (orange)
upright, 10–12"



Dragone Dusty Rose
upright, 10–12"



Valentine
upright, 10–12"

Begonia Exotic

| | |
|--|------------|
| Mega50 | |
| Fantastic foliage | |
| Great for shaded areas | |
| Quick and easy grower - same timing as tuberous begonias | |
| Available beginning week 1 | Collection |



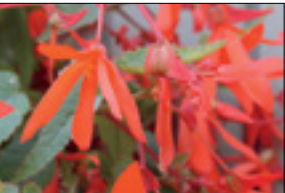
Gryphon
upright, 8–14"

Begonia Exotic Bossa Nova

| | |
|---|------------|
| Mega50 | |
| Nonstop blooms from late spring-frost | |
| Self-cleaning and tough | |
| Perfect for hanging baskets or large containers | |
| Shade | |
| Available beginning week 1 | Collection |



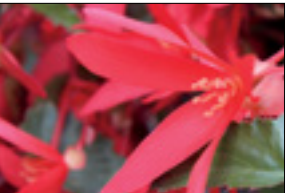
Night Fever Papaya **Exclusive to MYP!**
semi-trailing, 18–30"



Orange
semi-trailing, 18–30"



Pink Glow
semi-trailing, 18–30"



Red
semi-trailing, 18–30"



Yellow
semi-trailing, 18–30"

Begonia Fragrant Falls

| | |
|------------------------|------------|
| 51 | |
| New Series! | |
| Large, scented flowers | |
| Branches easily | |
| Long flowering window | |
| | Beekenkamp |



Lemon
semi-trailing, 10–12"



Peach
semi-trailing, 10–12"

Begonia Hybrid

| | |
|--------------------------------|------------|
| Mega50 | |
| Large bloom, angel wing habit | |
| Performs well in sun and shade | |
| Vigorous dense foliage | |
| Available beginning week 1 | Collection |



BIG™ Red with Green Leaf
upright, 12–24"



BIG™ Rose with Bronze Leaf
upright, 12–24"

Begonia Hybrid

| |
|--|
| Mega50 |
| New Series! |
| Bred for versatility, Tophat is easy to finish in 306 packs up to large patio containers |
| Largest blooms in its class - up to 20% larger than BIG® and Megawatt™ |
| Syngenta |



Tophat™ Pink
upright, 16–20"



Tophat™ Scarlet
upright, 16–20"

Begonia Hybrid

| | |
|--------------------------------|------------|
| Mega50 | |
| Large bloom, angel wing habit | |
| Performs well in sun and shade | |
| Vigorous dense foliage | |
| Available beginning week 1 | Collection |



Dragon Wing™ Pink
upright, 12–16"



Dragon Wing™ Red
upright, 12–16"



Tophat™ White
upright, 16–20"

Begonia l'Conia Portofino

| |
|--|
| 51 |
| New Series! |
| Proven performance with premium appeal |
| Target audience for l'Conia brand appeals to the Millennial shopper eager to personalize their space with ease |
| Exceptionally large, showy blooms are perfect inspiration for a warm welcome |
| Dummen Orange |



Hot Coral
semi-trailing, 12–20"



Hot Orange
semi-trailing, 12–20"



Sunrise
semi-trailing, 12–20"



Yellow
semi-trailing, 12–20"



Upright Fire
upright, 12–20"



Upright Salmon
upright, 12–20"

Begonia Solenia®

| |
|--|
| 51 |
| Vigorous habit with glossy foliage and large showy flowers |
| Thrives in high light and high humidity |
| Prefers full sun and is mildew tolerant |
| Ideal for mixed containers |
| Available beginning week 1 |
| Collection |



Apricot
upright, 10–15"



Dark Pink
upright, 10–15"



Dusty Rose
upright, 10–15"



Light Yellow
upright, 10–12"



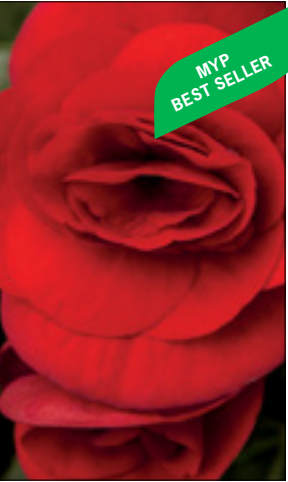
Red Improved
upright, 10–15"



Orange
upright, 10–15"



Salmon Coral
upright, 10–15"



Velvet Red
upright, 10–15"

Begonia Tuberous Nonstop®

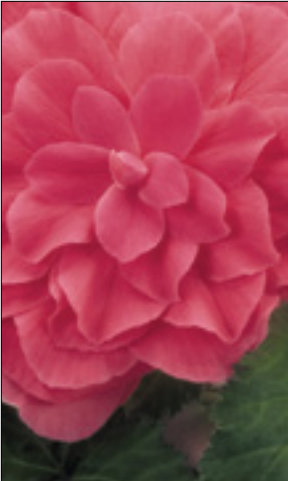
| |
|---|
| Mega50 |
| Free flowering with large 3-4" blooms |
| Uniform, well-branched, and compact |
| Ideal for pots, hanging baskets, and beds |
| Available beginning week 1 |
| Collection |



Joy Yellow
upright, 10–15"



Orange
upright, 10–15"



Pink
upright, 10–15"



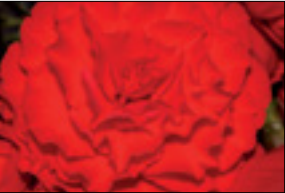
Red
upright, 10–15"



Yellow
upright, 10–15"

Begonia Tuberous Nonstop® Mocca

| |
|---|
| Mega50 |
| Free flowering with large 3-4" blooms and dark leaves |
| Uniform, well-branched, and compact |
| Ideal for pots, hanging baskets, and beds |
| Available beginning week 1 |
| Collection |



Deep Orange
upright, 10–15"



Red
upright, 10–15"



Pink Shades
upright, 10–15"



Scarlet
upright, 10–15"



White
upright, 10–15"



Yellow
upright, 10–15"

Begonia Tuberous OnTop®

| |
|--|
| Mega50 |
| The OnTop series boasts huge flowers all summer long |
| Heat tolerant |
| Deadheading is unnecessary |
| Available beginning week 1 |
| Collection |



Sunset Shades
upright, 8–12"

Bidens

| | |
|---|---------|
| 51 | Pinched |
| Bicolor Bidens with large flowers on a compact mounding plant | |
| Self cleaning flowers | |
| Great for 1 qt. and 2.5 qts. | |



Danziger



Blazing Fire
upright mounding, 12–18"

Bidens

| | |
|---|---------|
| 51 | Pinched |
| Extremely large flowers with a mounding habit | |
| Flowers are larger than most bidens | |
| Ideal for hanging baskets and containers | |

Cultivaris



Popstar
mounding, 8–12"

Bidens

| | |
|--------------------------------------|---------|
| 51 | Pinched |
| Early to flower | |
| Great for quarts and hanging baskets | |
| Great new color in Bidens | |



Danziger



Pretty in Pink
semi-trailing, 12–18"



White Delight
semi-trailing, 12–18"

Bidens Beedance™

| | |
|--|---------|
| 51 | Pinched |
| The Beedance series are strong and compact bidens that are attractive to both bees and butterflies | |
| The bicolored flowers bloom all season and are perfect in containers and combinations | |



Suntory



Painted Red
mounding, 9–11"



Red Stripe
mounding, 9–11"

Bidens Beezar!™

| | |
|--|---------|
| 51 | Pinched |
| Upright mounding habit with good branching and many early season flowers | |
| Solid red flower when it opens and fades to a yellow center | |



Kientzler



Fire Wheel
upright mounding, 12–18"

Bidens Bidy™

| | |
|--|---------|
| 51 | Pinched |
| Bidens Bidy is an early flowering variety with a large daisy-type flower on a controllable habit | |



Dummen Orange



Bidy Bop Blaze (Orange)
upright, 12–18"



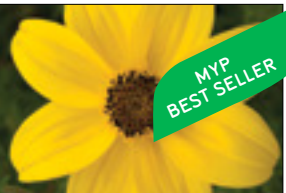
Bidy Gonzales
upright mounding, 8–12"

Bidens Mexican Gold™

| | |
|---|---------|
| 51 | Pinched |
| Mexican Gold flowers early with a semi-trailing habit, and vigorous growth | |
| Mexican Gold Semi-Double features a more dense and controlled plant habit with eye-catching semi-double flowers | |
| Great for quarts, gallons and mixed containers | |



Syngenta



Gold
semi-trailing, 12–18"



Gold Semi-Double
semi-trailing, 12–18"

Brachyscome Fresco™

| |
|-----------------------------------|
| 51 |
| Early to flower |
| Compact habit with mounding habit |
| Full sun to partial shade |

Danziger



Candy
mounding, 8–14"

Bracteantha Cottage

| |
|--|
| 51 |
| The cottage series combines the most disease-resistant genetics available with all-season durability |

Westhoff



Rose
upright, 10–14"



Yellow
upright, 10–14"

Bidens Namid™

| | |
|---|---------|
| 51 | Pinched |
| Compact and mounding habit | |
| Great solution for 8 - 12" mixed containers | |



Selecta



Compact Yellow
mounding, 6–8"



Early Yellow
semi-trailing, 12–18"



Purple
mounding, 8–14"

Bracteantha Mohave™

| |
|--|
| 51 |
| Early flowering and easy to grow with excellent garden performance |
| Mohave Yellow is more mounding than the rest of the series |

Selecta



Basket Yellow
trailing, 12–16"



Orange
upright, 12–16"



Yellow
upright, 12–16"

Calceolaria Calynopsis™

| |
|--|
| 51 |
| Very unique pocketbook-shaped flowers in a range of colors |
| Tolerates mild frost |
| Will bloom well into the summer in milder climates |
| Great for small pots and larger, mixed containers |
| Premium item for early season impulse sales! |
| Available beginning week 1 |
| Selecta |



Orange
upright mounding, 10–12"



Orange Red Eye
upright mounding, 10–12"



Red
upright mounding, 10–12"



Yellow
upright mounding, 10–12"



Yellow with Red
upright mounding, 10–12"

Calendula Caleo™

| |
|---|
| 51 |
| Kick start your spring with Caleo for early season sales! |
| Extremely durable flowering during cool weather as well as through the heat of summer |
| Resistant to powdery mildew |
| Syngenta |



Orange
mounding, 8–10"



Yellow
mounding, 8–10"

Calibrachoa

| |
|---|
| 51 |
| New Series! |
| New one-off variety with incredible flower power and plant performance, paired with a unique streaking bloom pattern of violets and white |
| Westhoff |



Skywalker™
upright mounding, 6–10"

Calibrachoa Aloha Kona

| |
|--|
| 51 |
| Aloha Kona is an early blooming, compact series of calibrachoa that is perfect for mounded baskets or small pots |
| The large flowers come in a wide range of tropical colors |
| Dummen Orange |



Blue Sky
mounding, 8–10"



Cherry Red
mounding, 8–10"



Dark Red 2018
mounding, 8–10"



Fuchsia
mounding, 8–10"



Honeycomb
mounding, 8–10"



Hot Orange
mounding, 8–10"



Hot Pink
mounding, 8–10"



Midnight Blue
mounding, 8–10"



Neon
mounding, 8–10"



Pineapple
mounding, 8–10"



Soft Pink
mounding, 8–10"



Sunshine 19
mounding, 8–10"



Yellow
mounding, 8–10"

Calibrachoa Aloha Nani

| |
|--|
| 51 |
| Dummen's most compact calibrachoa series |
| No PGRs needed - naturally compact |
| Perfect for high density production and small pots |

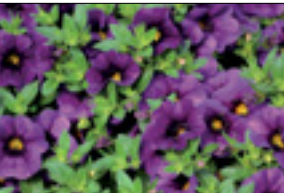
 **Dummen Orange**



Dark Red
mounding, 4-6"



Golden Girl
mounding, 4-6"



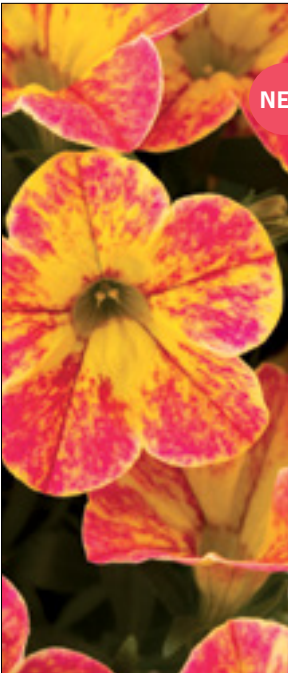
Midnight Blue 2018
mounding, 4-6"



Pink 2018
mounding, 4-6"



Red Cartwheel
mounding, 4-6"



Tropicana
mounding, 4-6"



White
mounding, 4-6"

Calibrachoa Bloomtastic

| | |
|--|---------|
| 51 | Pinched |
| New calibrachoa breeding for larger flowers and more vigor to be used in hanging baskets and landscape plantings | |

 **Dummen Orange**



Cherry
mounding, 15-18"



Fuchsia
mounding, 15-18"



Rose Quartz
mounding, 15-18"

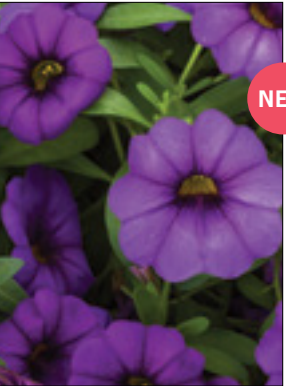


Serenity
mounding, 15-18"

Calibrachoa Cabrio™

| | |
|--|---------|
| 51 | Pinched |
| New Series! | |
| Controlled, mounded habits work well in small pots and baskets | |
| Hyper-uniform habits play well together for impactful multi-color combinations | |

 **Syngenta**



Amethyst
mounding, 4-8"



Burgundy
mounding, 4-8"



Eclipse Lilac
mounding, 4-8"



Grape
mounding, 4-8"



Pink
mounding, 4-8"



Yellow
mounding, 4-8"

Calibrachoa Calipetite™

| |
|---|
| 51 |
| Calipetite has a dense mounding habit—very different from the typical calibrachoa |
| It is naturally compact without PGRs, blooms under short days and is ideal for small pot production |

 **Sakata**



Mid Blue
mounding, 2-4"



Pink
mounding, 2-4"



Red
mounding, 2-4"



White
mounding, 2-4"



Yellow
mounding, 2-4"

Calibrachoa Calitastic

| | |
|---|---------|
| 51 | Pinched |
| Very uniform in habit and flower timing | |
| Early to flower and continues flowering throughout the summer | |
| Upright mounded habit makes them ideal for hanging baskets and containers | |

Westhoff



Fancy Fuchsia
mounding, 6–10"



Gold
mounding, 6–10"



Ice Blue
mounding, 6–10"



Mango
mounding, 6–10"



Orange
mounding, 6–10"



Papaya
mounding, 6–10"



Plumberry Punch
mounding, 6–10"



Pumpkin Spice
mounding, 6–10"



Red Lips
mounding, 6–10"



White Imp
mounding, 6–10"

Calibrachoa Callie®

| | |
|--|---------|
| 51 | Pinched |
| A profusion of petunia-like blooms flowering all season long | |
| Bred for early flowering under shorter days | |
| Strong root system is more tolerant to high pH | |
| Ideal for hanging baskets and large containers | |

Syngenta



Apricot
trailing, 6–10"



Burgundy
trailing, 4–8"



Coral
trailing, 6–10"



Coral Pink
trailing, 4–8"



Dark Blue
trailing, 4–8"



Dark Red
trailing, 4–8"



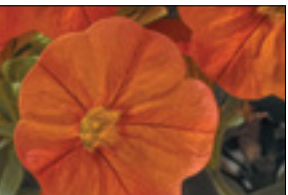
Eclipse Lavender
trailing, 6–10"



Light Blue
trailing, 4–8"



Mango
trailing, 6–10"



Orange
trailing, 6–10"



Orange Sunrise Imp
trailing, 6–10"



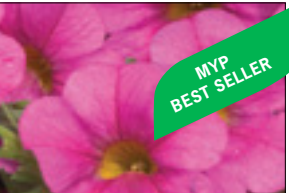
Pink with Eye Imp
trailing, 4–8"



Pink Morn
trailing, 4–8"



Purple Imp
trailing, 4–8"



Rose
semi-trailing, 4–8"



Scarlet
trailing, 6–10"



Star Orange
semi-trailing, 4–8"



Star Pink
semi-trailing, 4–8"



White Imp
trailing, 6–10"



Yellow Imp
trailing, 6–10"

Calibrachoa Candy Shop™

| | |
|---|---------|
| 51 | Pinched |
| A truly unique brush-work bicolor pattern | |
| Early flowering | |
| Westhoff | |



Candy Bouquet®
mounding, 6–10"



Candy Crush
upright mounding, 6–10"



Candy Sweet Dreams
upright mounding, 6–10"



Grape Splash
upright mounding, 6–10"

Calibrachoa Chameleon™

| | |
|---------------------------------------|---------|
| 51 | Pinched |
| Very unique colors! | |
| Compact and uniform across the series | |
| Westhoff | |



Atomic Orange
semi-trailing, 8–10"



Blueberry Scone
semi-trailing, 8–10"



Cherry Banana
semi-trailing, 8–10"



Indian Summer
semi-trailing, 8–10"



Lemon Berry
semi-trailing, 8–10"



Pink Diamond
semi-trailing, 8–10"



Sunshine Berry
semi-trailing, 8–10"



Twinkled Pink
semi-trailing, 8–10"

Calibrachoa MiniFamous™ Neo

| | |
|--|---------|
| 51 | Pinched |
| Early flowering with large flower size | |
| Exceptional performers with uniform growth habits and timing | |
| Full sun | |
| Selecta | |



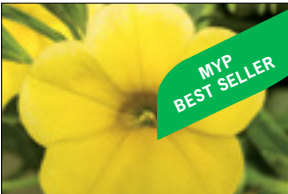
Apricot Strike
semi-trailing, 10–15"



Blue
mounding, 4–6"



Coral + Red Eye
semi-trailing, 10–15"



Deep Yellow
semi-trailing, 10–15"



Light Blue
semi-trailing, 10–15"



Light Pink + Eye
semi-trailing, 6–10"



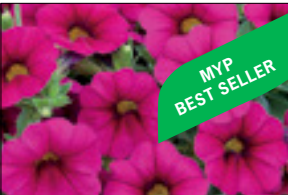
Orange + Red Eye 17
semi-trailing, 10–15"



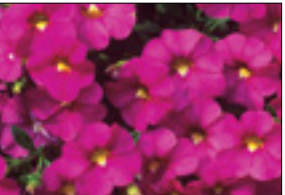
Pink
semi-trailing, 10–15"



Pink Strike
semi-trailing, 10–15"



Purple
semi-trailing, 10–15"



Rose
semi-trailing, 10–15"



Royal Blue 17
semi-trailing, 10–15"



Vampire
semi-trailing, 10–15"



Violet + Eye
semi-trailing, 10–15"



White
semi-trailing, 10–15"



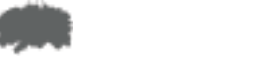
White + Yellow Eye
semi-trailing, 10–15"



Yellow
semi-trailing, 10–15"

Calibrachoa MiniFamous™ Neo Double

| | |
|---|---------|
| 51 | Pinched |
| Breeding breakthrough with fully double flowers | |
| Great outdoor performance | |
| Ideal for use in pots, mixed containers and baskets | |
| Selecta | |



Double Amethyst
semi-trailing, 6–10"



Double Blue
semi-trailing, 6–10"



Double Lemon
semi-trailing, 6–10"



Double Pink
semi-trailing, 6–10"



Double Purple
semi-trailing, 6–10"

Calibrachoa MiniFamous™ Standard

| | |
|---|---------|
| 51 | Pinched |
| Very uniform habit between colors with a strong root system | |
| First mounding, then semi-trailing as the growing season progresses | |
| Excellent outdoor performance and easy to flower | |
| This series is ideal for use in pots, mixed containers, and baskets | |



Selecta



Orange
semi-trailing, 6–10"



Pure Yellow
semi-trailing, 6–10"

Calibrachoa MiniFamous™ Standard Double

| | |
|---|---------|
| 51 | Pinched |
| Breeding breakthrough with fully double flowers | |
| Great outdoor performance | |
| Ideal for use in pots, mixed containers and baskets | |



Selecta



Double Apricot
semi-trailing, 6–10"



Double Deep Yellow
semi-trailing, 6–10"



Double Magenta
semi-trailing, 6–10"



Double Pink Vein
semi-trailing, 6–10"

Calibrachoa MiniFamous™ Uno

| | |
|--|---------|
| 51 | Pinched |
| Grower friendly series with strong performance | |
| Striking in hanging baskets | |



Selecta



Blue
semi-trailing, 6–10"



Orange
semi-trailing, 6–10"



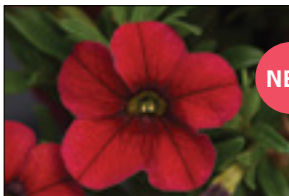
Pink
semi-trailing, 6–10"



Pink Star
semi-trailing, 6–10"



Pink Strike
semi-trailing, 6–10"



Red
semi-trailing, 6–10"



Violet Star
semi-trailing, 8–10"



White
semi-trailing, 6–10"



Yellow
semi-trailing, 6–10"



Yellow + Red Vein
semi-trailing, 10–15"

Calibrachoa MiniFamous™ Uno Double

| | |
|---|---------|
| 51 | Pinched |
| Everything you love about MiniFamous Doubles with a naturally compact habit | |
| Great outdoor performance | |
| Ideal for use in pots, mixed containers and baskets | |



Selecta



Double Lemon
semi-trailing, 4–8"



Double Pinktastic
semi-trailing, 4–8"



Double Red
semi-trailing, 4–8"



Double White
semi-trailing, 4–8"

Calibrachoa Noa®

| | |
|---|---------|
| 51 | Pinched |
| Low maintenance series | |
| Good for hanging baskets and small containers | |
| Flowers even under short days | |



Danziger



Blue Legend
semi-trailing, 6–10"



Dark Pink Carnival
semi-trailing, 6–10"



Papaya
semi-trailing, 6–10"



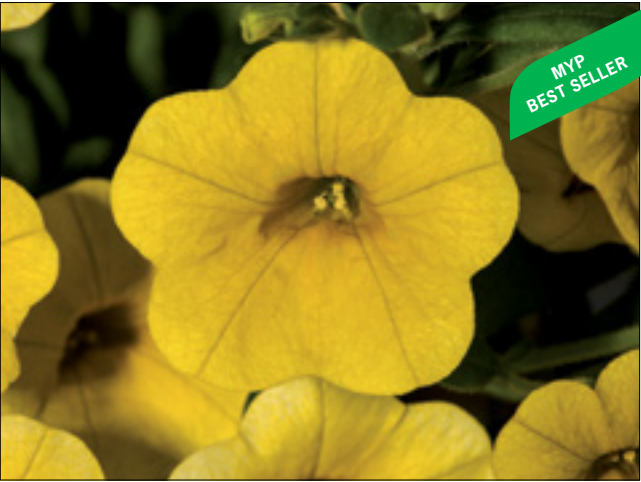
Red Imp
semi-trailing, 6–10"



Sunset
semi-trailing, 6–10"



Ultra Purple
semi-trailing, 6–10"



Yellow
semi-trailing, 6–10"

Canna Cannova®

| |
|--|
| Mega50 |
| Earliest flowering canna |
| Nonstop bloomer, from spring to fall |
| Great branching, compact and uniform |
| Grows better in cooler climates and lower light than other canna varieties |
| First F1 hybrid canna series from seed |



Ball Ingenuity



Bronze Orange
upright, 24–36"



Bronze Scarlet
upright, 24–36"



Mango
upright, 24–36"



Orange Shades
upright, 24–36"



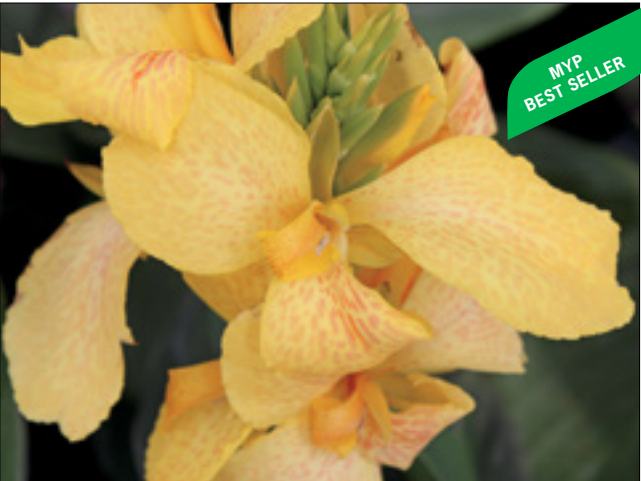
Red Flame
upright, 24–36"



Red Shades
upright, 24–36"



Rose
upright, 24–36"



Yellow
upright, 24–36"

Cassia

| |
|---|
| Mega50 |
| Cassia is a great plant to attract butterflies, bees and birds to your garden |
| Drought tolerant and repels deer |
| Foliage when touched gives off a "buttered popcorn" smell |
| Plants ship with novelty tag! |



Collection



Popcorn
upright, 24–30"

Catharanthus Vinca

| |
|---|
| 51 |
| These plants are tiny but perfect! |
| Works well in small pots |
| A heat tolerant series with glossy green foliage and superior branching |



Suntory



Soiree Kawaii Coral
upright, 6-10"



Soiree Kawaii Lavender
upright, 6-10"



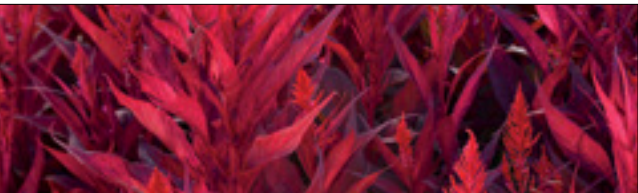
Soiree Kawaii Pink
upright, 6-10"

Celosia

| |
|--|
| 51 |
| Green/red foliage with blazing-red, long lasting flowers is the perfect choice for gallon pots |
| Excellent landscape plant |
| Foliage turns red under high light |
| Note: After week 9/10 needs to be grown in short day for 14-21 days to initiate |



Sakata



Dragon's Breath
upright, 18-24"

Celosia Intenz

| | |
|--|---------|
| 51 | Pinched |
| A drought tolerant bedding plant that is a major butterfly attractant with a striking violet plume color | |
| Use as an accent plant for combos or as a landscape edging component | |
| Blooms from early summer to mid fall | |
| Grow in full sun | |



Ball Ingenuity



Classic
upright, 14-16"

Cleome Clio™

| | |
|--|---------|
| 51 | Pinched |
| Sterile vegetative cleome that is continuously flowering | |
| Strong, upright structure with excellent branching | |
| Thornless and compact, with no unpleasant scent | |

Danziger



Magenta
upright, 14-16"



Pink Lady
upright, 14-16"

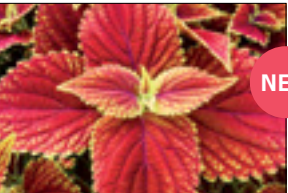
Coleus Main Street

| | |
|---|---------|
| 51 | Pinched |
| Heat and drought tolerant | |
| Does well in sunny locations | |
| Exceptionally clear and consistent color patterns | |

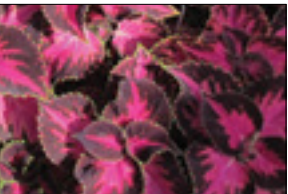
Dummen Orange



Alligator Alley
upright, 18-24"



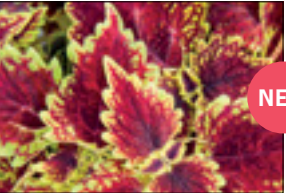
Canal Street
upright, 18-24"



Fifth Avenue
upright, 18-24"



Ocean Drive
upright, 18-24"



Oxford Street
upright, 18-24"



River Walk
upright, 18-24"



Rodeo Drive
upright, 18-24"



Ruby Road
upright, 18-24"



Sunset Boulevard
upright, 18-24"

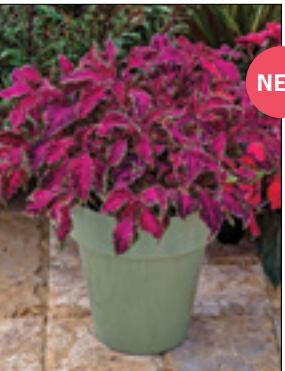


Wall Street
upright, 18-24"

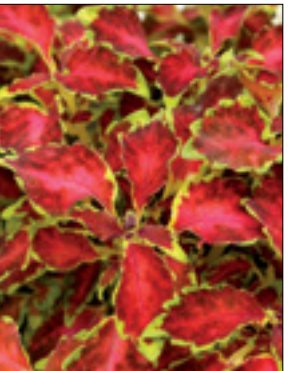
Coleus Premium Party Time™

| | |
|---|---------|
| 51 | Pinched |
| Dense well-branched plants | |
| Very colorful and ideal component plant for mixes | |
| Does well in full sun to shade | |

Sakata



Pink Fizz
mounding, 12-18"



Ruby Punch
upright, 15-18"

Coleus Premium Terra Nova®

| | |
|--|---------|
| 51 | Pinched |
| Very colorful, clean appearance | |
| Not a frequent bloomer | |
| Self-branching | |
| Happy in both garden beds and containers | |
| Part to full shade | |

Terra Nova



Terra Nova® Jitters
mounding, 14-16"



Terra Nova® Marrakesh
mounding, 6-10"



Terra Nova® Pink Poodle
mounding, 14-16"

MYP
BEST SELLER

Coleus Standard

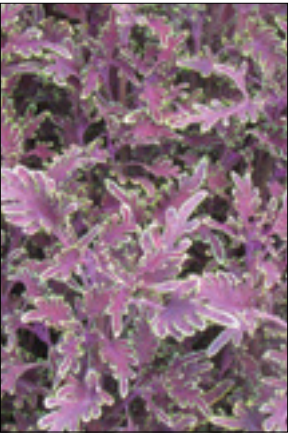
| | |
|--|---------|
| 51 | Pinched |
| One of the most popular bedding plants with brightly colored leaf patterns | |
| Grows well in sun or shade | |
| Ideal for beds, pots, and mixed containers | |

Collection



MYP
BEST SELLER

Beauty of Lyon
upright, 15–18"



Kiwi Fern
upright, 15–18"

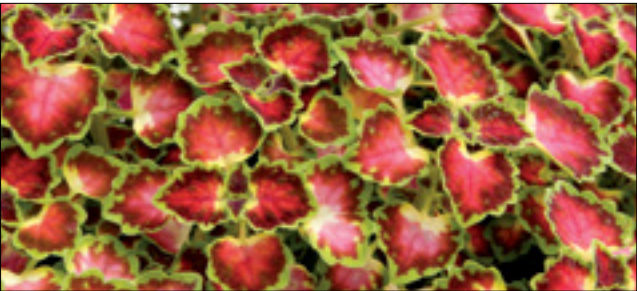


Pineapple Splash
upright, 12–15"

Coleus Trailing Great Falls

| |
|---|
| 51 |
| Decorative series of trailing coleus for combination baskets and planters |
| Can take shade as well as high heat |

Dummen Orange



Angel
trailing, 14–18"



NEW

Niagara
trailing, 14–18"



NEW

Iguazu
trailing, 14–18"



Yosemite
trailing, 14–18"

Cordyline

| |
|--|
| Mega50 |
| Various color and leaf shapes |
| A nice alternative to dracaena spikes |
| Ideal for use in mixed containers and beds |

Collection



MYP
BEST SELLER

Red Sensation
upright, 18–30"



Red Star
upright, 18–30"

Cuphea

| |
|--|
| 51 |
| Also called Japanese Myrtle |
| Blooms with an abundance of small prolific flowers |
| Grows well in full sun |
| Ideal for mixed containers |
| 2 cuttings per cell |

Collection



Mexicana (Violet)
mounding, 8–12"

Cuphea FloriGlory®

| | |
|--|---------|
| 51 | Pinched |
| 5 x the flower power with excellent garden vigor | |

Westoff



Diana
mounding, 8–12"



Maria
mounding, 8–12"



Sofia
mounding, 8–12"

Dahlia Large Dahlinova Hypnotica®

| |
|---|
| 51 |
| Large flowers, good branching and vigorous plant habit |
| Rain and mildew tolerant |
| Bright colors, uniform series and continuous summer flowering |



Dummen Orange



Dark Night (dark burgundy)
upright, 12–24"



Lavender
upright, 12–24"



Orange
upright, 12–24"



Pink Bicolor
upright, 12–24"



Red
upright, 12–24"



Icarus
upright, 12–24"



Rose Bicolor
upright, 12–24"



Tequila Sunrise
upright, 12–24"



Yellow Imp
upright, 14–28"

Dahlia Large Grandahlia™

| |
|---|
| 51 |
| Pretty display of vivid colors above the plant canopy |
| Continuous bloomer, develops buds through the plant's entire lifespan |
| Full sun |



Syngenta



Dark Pink
upright, 14–18"



Dark Red
upright, 14–18"



Fire
upright, 14–18"



Orange
upright, 14–18"



Pink Ice
upright, 14–18"



Yellow
upright, 14–18"

Dahlia Large XXL

| |
|---|
| 51 |
| Dahlias with flowers (up to 5") in a wide range of colors |
| Vigorous plant habit for use in large containers |



Dummen Orange



Chiapas
upright, 16–22"



Durango
upright, 16–22"



Sunset
upright, 16–22"



Tabasco
upright, 16–22"



Taxco
upright, 16–22"



Veracruz
upright, 16–22"

Dahlia Standard Dahlinova®

| |
|---|
| 51 |
| Abundance of 3-4" rich and vibrant flowers |
| Varieties are rain and mildew resistant |
| Flowers consistently throughout the season without flushing |
| Ideal in beds, pots and mixed containers |



Dummen Orange



MYP
BEST SELLER

California (yellow/red bicolor)
upright, 10-16"



Carolina Orange
upright, 10-16"



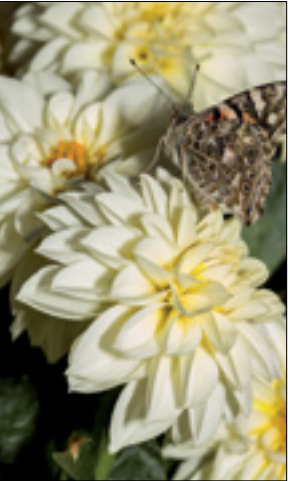
Florida (rose bicolor)
upright, 10-16"



Lisa Burgundy
upright, 8-12"



Lisa Dark Pink
upright, 8-12"



Lisa White
upright, 8-12"



MYP
BEST SELLER

Montana (yellow)
upright, 10-16"



New York (pink bicolor)
upright, 10-16"



Texas (salmon/pink)
upright, 10-16"



MYP
BEST SELLER

Carolina (red)
upright, 10-16"

Dahlia Standard Goldalia™

| |
|---|
| 51 |
| Dynamic bicolor flowers |
| Compact growth with excellent branching |
| Ideal in beds and containers |



Syngenta



Rose Imp
upright, 8-12"



Scarlet Imp
upright, 8-12"

Dahlia Temptation

| |
|---|
| 51 |
| New Series! |
| Unique and special flower color |
| Dark, glossy foliage provides contrast |
| Heat tolerant with continuous flowering above foliage |
| Large, bold flowers are irresistible at retail |



Dummen Orange



NEW

Orange
upright, 12-24"



NEW

Purple
upright, 12-24"



NEW

Red Velvet
upright, 12-24"

Dahlia Standard Starsister®

| |
|--|
| 51 |
| Large uniform flowers with beautiful distinct colors |
| Ideal for mixed combinations and in beds |



Dummen Orange



Crimson Picotee
upright, 8-12"



Red/White
upright, 10-16"



MYP
BEST SELLER

Scarlet/Yellow
upright, 10-16"





MYP
BEST SELLER

Yellow Stripes
upright, 8-12"

Dianthus Jolt

| 51 |
|---|
| Highly durable Jolt withstands hot summer conditions with few disease issues and continues to flower without setting seed |
| Grower friendly, well-branched plants are easy to produce with less to no PGRs |
| 2015 All-America Selections National Winner Jolt Pink will stir up consumer excitement with extra publicity and promotion |
| Strong dark green foliage |

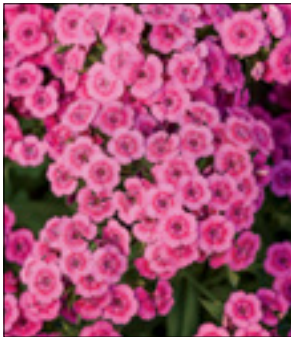


Available beginning week 1

Collection



Cherry
mounding upright, 16–20"



Pink
mounding upright, 16–20"



Pink Magic
mounding upright, 16–20"

Diascia Darla®

| 51 | Pinched |
|---|---------|
| Compact plants are mounding and very free-flowering | |
| Superb heat tolerance and garden performance | |
| Ideal for mixed containers, baskets, and beds | |

Syngenta



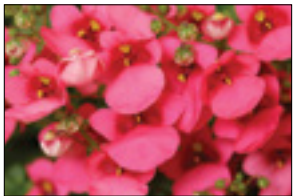
Light Pink
mounding, 10–12"



Orange Imp
mounding, 10–12"



Red Imp
mounding, 8–10"



Rose
mounding, 10–12"

Dichondra

| 51 |
|---|
| Cascading habit is very heat and drought tolerant |
| Ideal for hanging baskets and mixed containers |
| Silver-stemmed foliage feels like silk |
| Multi seeds per cell |

Collection



Silver Falls
trailing, 18–36"

Dracaena indivisa

| 51 and 288 Tray |
|--|
| Upright habit |
| Indoor foliage plants that are ideal accent plants |
| Multi seeds per cell |

Collection

Dracaena Marginata
See Foliage listing on page 121



Spike (green)
upright, 24–36"

Duranta

| 51 | Pinched |
|---|---------|
| Compact habit with contrasting variegated green foliage | |
| Heat-loving plant | |
| Ideal for combination plantings and hanging baskets | |

Collection



Golden Edge
semi-trailing, 12–18"

Dorotheanthus Mezo™

| 51 |
|--|
| Vigorous trailing habit with deep rose flower at end of season |
| Performs well in sun or shade |
| Perfect for hanging baskets or mixed container and cascades nicely over a wall |

Syngenta



Trailing Red
trailing, 6–10"

Euphorbia

| 51 |
|---------------------------------------|
| Superb quality - first seed Euphorbia |
| Perfect for mixed combos |
| Heat and drought tolerant |
| No deadheading required |
| Full sun |
| Multi seeds per cell |

Available beginning week 1 Collection



Glitz
mounding upright, 10–14"

Euphorbia Euphoric™

| 51 | Pinched |
|-------------------------------|---------|
| Vigorous well-branched plants | |
| Early to bloom | |
| Large flowers | |
| Fast grower | |
| 2 cuttings per cell | |

Syngenta

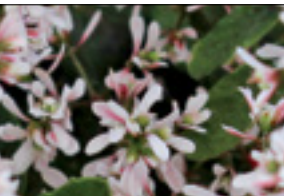


White
upright, 10–15"

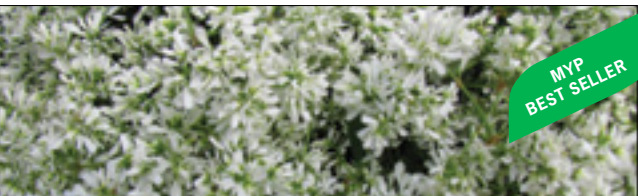
Euphorbia Star Dust

| 51 | Pinched |
|--|---------|
| Elegant white or pink flowers work great in containers | |
| Super Flash has a very dense flowering habit | |
| 2 cuttings per cell | |

Dummen Orange



Pink Pandora
mounding upright, 10–14"



Super Flash
mounding, 8–10"



White Sparkle
mounding, 8–10"

Fuchsia

| | |
|---|---------|
| 51 | Pinched |
| Stunning pendulous plants with unique flowers and green foliage | |
| Upright and trailing habits for sun to partial shade | |
| Ideal for pots, hanging baskets and mixed containers | |



Collection



Blue Eyes
trailing, 14–18"



Dark Eyes
trailing, 14–18"



Dollar Princess
upright, 12–18"



Marinka
trailing, 12–24"



Pink Marshmallow
trailing, 18–24"



Prof. Henkel
upright, 18–24"



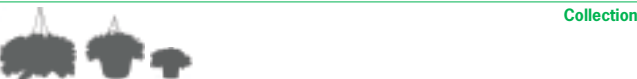
Southgate
trailing, 14–18"



Swingtime
trailing, 12–24"

Fuchsia Corabells

| | |
|---|---------|
| 51 | Pinched |
| New Series! | |
| Striking multi-colored flowers are carried on arching stems | |
| Perfect for all kinds of containers | |



Collection



Dark Eyes
trailing, 10–12"



Neon & White
trailing, 10–12"



Red & White
trailing, 10–12"



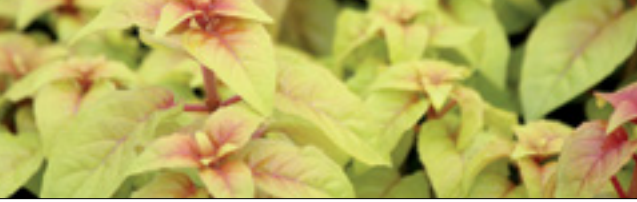
Rose & Purple
trailing, 10–12"

Fuchsia Variegated Leaf

| | |
|---|---------|
| 51 | Pinched |
| Distinct colored foliage | |
| Cool tolerant varieties | |
| Good accent plant in combination planters | |



Collection



Autumnale
trailing, 14–20"



Firecracker
upright, 12–18"

Geranium Interspecific Caliente®

| |
|---|
| 34 Strip |
| A cross between the traditional zonal geranium and the ivy geranium |
| Well-branched mounding habit with deep green foliage |
| Heat and edema resistant, with large blooms |
| Ideal for pots and hanging baskets |



Syngenta



Coral Salmon
semi-trailing



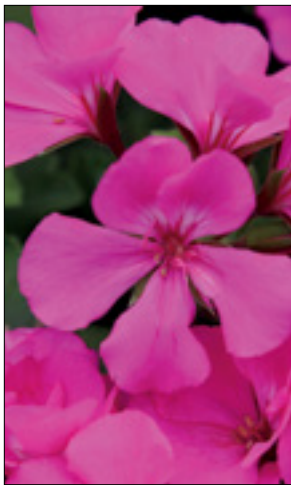
Deep Red
semi-trailing



Fire Imp
semi-trailing



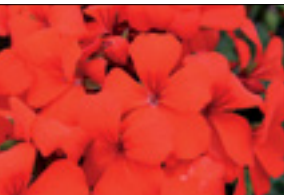
Hot Coral
semi-trailing



Lavender Imp
semi-trailing



Magenta
semi-trailing



Orange
semi-trailing



Pink
semi-trailing



Rose
semi-trailing



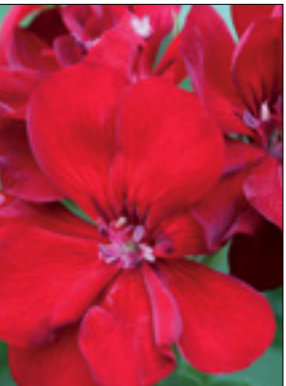
White
semi-trailing

Geranium Interspecific Calliope® Large

| |
|---|
| 34 Strip |
| Interspecific with zonal characteristics |
| Excellent heat performance in full sun |
| Great for hanging baskets and pots 8" or larger |



Syngenta



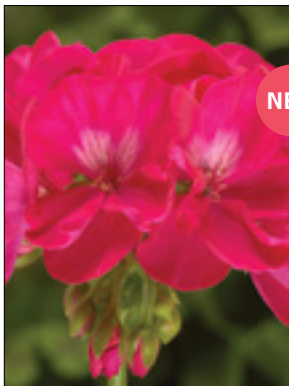
Burgundy
semi-trailing



Dark Red
semi-trailing



Hot Pink
semi-trailing



Hot Rose
semi-trailing



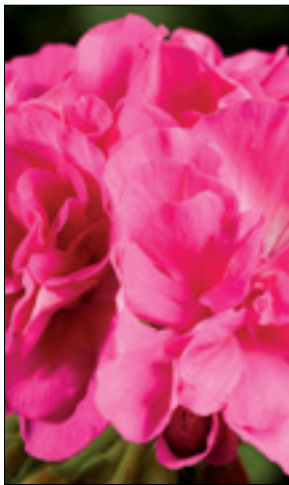
Lavender
semi-trailing



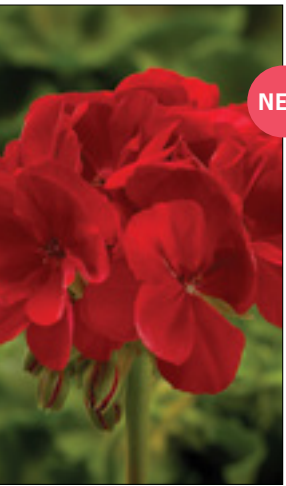
Lavender Splash
semi-trailing



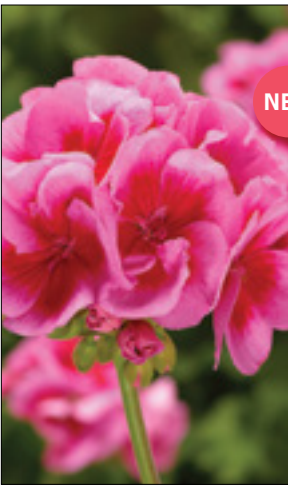
Magenta
semi-trailing



Pink
semi-trailing



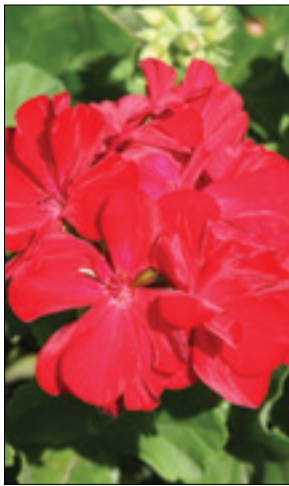
Red
semi-trailing



Rose Mega Splash
semi-trailing



Salmon
semi-trailing



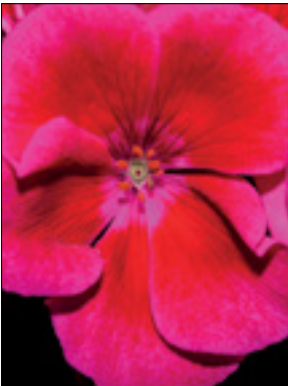
Scarlet Fire
semi-trailing

Geranium Interspecific Calliope® Medium

| |
|---|
| 34 Strip |
| Same benefits as existing Calliope Large series, with a more controlled habit |
| Great heat and drought tolerance |
| Great for pots from quarts to 12" |
| Similar growth habit as Americana series |



Burgundy
semi-trailing



Crimson Flame
semi-trailing



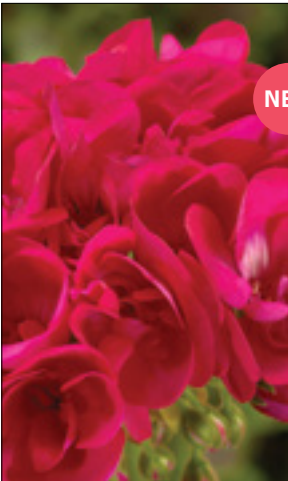
Dark Red
semi-trailing



Deep Rose
semi-trailing



Hot Pink
semi-trailing



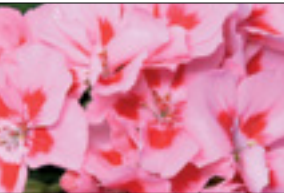
Hot Rose
semi-trailing



Lavender Rose
semi-trailing



Light Lavender
semi-trailing



Pink Flame
semi-trailing



Red
semi-trailing



Rose Mega Splash
semi-trailing



Violet
semi-trailing



Scarlet
semi-trailing



White
semi-trailing

Geranium Interspecific Moxie!™

| |
|--|
| 34 Strip |
| New Series! |
| First and only interspecific geranium bred for brilliant color in small containers |
| Mounded, densely branched habits deliver superior flower coverage all season long |

Syngenta



Dark Red
upright



Deep Rose
upright



Pink
upright



Rose Mega Splash
upright



Scarlet
upright



White
upright

Geranium Ivy Cascade™

| |
|---|
| 34 Strip |
| Also known as "Alpine geraniums" |
| Single flowered varieties, great for hot and humid climates |
| Very free flowering with a glossy leaf and no leaf zone |
| Ideal for window boxes and hanging baskets |

Syngenta



Lila Compact
semi-trailing



Sofie
semi-trailing

Geranium Ivy Freestyle®

| |
|--|
| 34 Strip |
| Semi-trailing ivy geranium with clean, crisp colors and large blooms |
| Compact and naturally branching habit eliminates the need for pinching |
| Good edema resistance and heat tolerance |
| Ideal for window boxes and hanging baskets |

Syngenta



Arctic Red
semi-trailing



Cherry Rose
semi-trailing



Orchid
semi-trailing

Geranium Ivy Contessa™

| |
|--|
| 34 Strip |
| Growers can choose from a wide range of colors and growth habits |
| Very good edema resistance |
| Ideal for baskets, window boxes, and large patio containers |

Syngenta



Burgundy
trailing



Burgundy Bicolor
trailing



Dark Red
trailing



Double Lilac
trailing



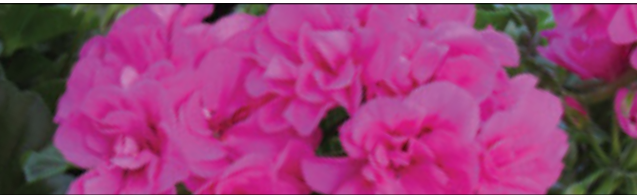
Hot Pink
trailing

Geranium Ivy Great Balls of Fire

| |
|--|
| 34 Strip |
| New ivy geranium breeding |
| Heat tolerant |
| Big double flowers with strong foliage |

Available weeks 1-19

Dummen Orange



Blue
semi-trailing



Burgundy Blaze
semi-trailing



Lavender
trailing



Purple
trailing



Red
trailing



White
trailing



Dark Red
semi-trailing



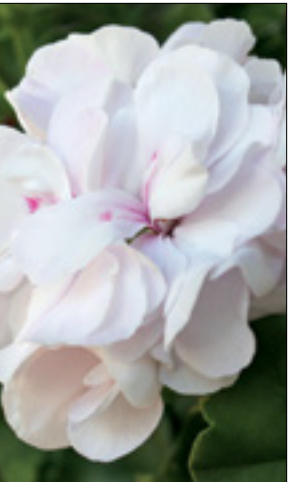
Deep Rose
semi-trailing



Lavender
semi-trailing



Merlot
semi-trailing



White
semi-trailing

Geranium Ivy Temprano™

| |
|--|
| 34 Strip |
| Growers can choose from a wide range of colors and growth habits |
| Very good edema resistance |
| Ideal for baskets, window boxes, and large patio containers |

Syngenta



Dark Red
trailing



Hot Coral
trailing



Pink
trailing



Salmon Imp
trailing

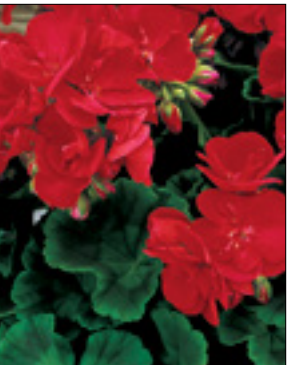


White
trailing

Geranium Zonal Americana®

| |
|--|
| 34 Strip |
| Medium-green leaves, medium-vigorous growth habit |
| Basal branching with exceptional garden performance and heat resistance |
| Ideal for containers, combination pots, and in flower beds |
| Americana is a great series for fast sales off the bench with its large and vibrant flowers with multiple blooms open at the first flush |
| Proven outdoor performance with the versatility to work in quart pots up to large containers |

Syngenta



Bright Red
upright



Cherry Rose
upright



Coral
upright



Dark Red
upright

Geranium Novelty Brocade

| |
|--|
| 34 Strip |
| Unique bi-color foliage with nonstop flowers that look great in any garden |
| Ideal for combination planters, garden beds and in the landscape |
| Available weeks 1-19 |

Dummen Orange



Fire Night
upright

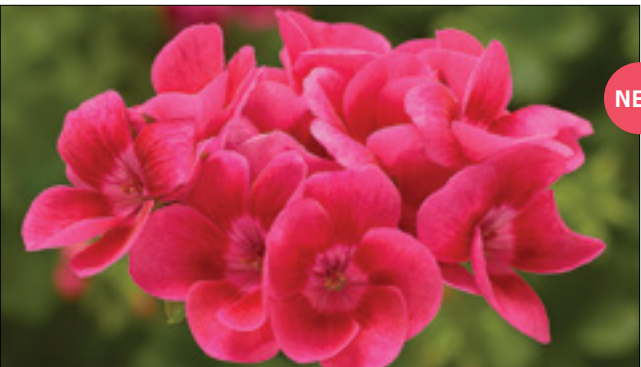


Wilhelm Langguth
upright

Geranium Pretty Little™

| |
|--|
| 34 Strip |
| New series - pretty little pop of color! |
| Loaded with flower buds and tons of irresistible bicolor flowers at finishing for incredible color pop |
| Perfect for premium branded quart programs or as stand-alone color |

Syngenta



Pink Splash
upright



Light Pink Splash
upright



Orchid
upright



Pink
upright



Red
upright



Rose Ice
upright



Rose Mega Splash
upright



Salmon
upright



White
upright



White Splash Imp
upright

Geranium Zonal Classic™

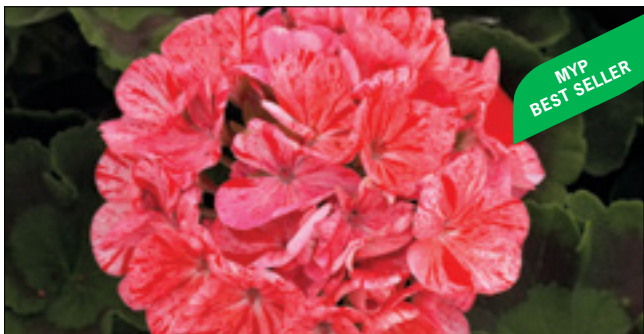
| |
|---|
| 34 Strip |
| Medium vigorous growth habit |
| Requires moderate use of PGRs during production |
| All have medium green foliage |
| Ideal for small to large containers and baskets |

Syngenta

Mosaic Purple
upright



Mosaic Red
upright



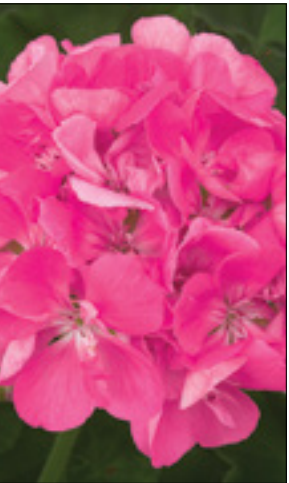
Geranium Zonal Patriot™

| |
|---|
| 34 Strip |
| Vigorous series, well-matched in habit and timing |
| Large flowers, good heat tolerance |
| Great for landscape and containers |

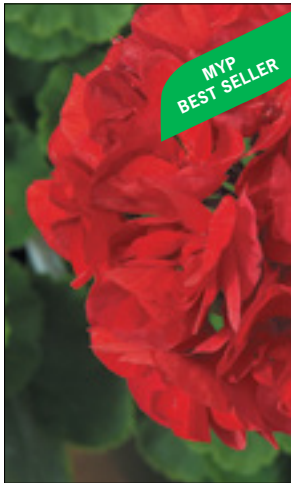
Available weeks 1-19

Dummen Orange

Bright Pink
upright



Bright Red
upright



Bright Violet
upright



Cherry Rose
upright



Evening Glow
upright



Lavender Blue
upright



Orange
upright



Rose Pink
upright



Salmon
upright



Watermelon
upright



White
upright



Geranium Zonal Rocky Mountain™

| |
|--|
| 34 Strip |
| Outstanding landscape performance |
| Superb heat tolerance |
| Vigorous plants with large colorful blooms |
| Ideal in flower beds and large containers |

Syngenta

Dark Red
upright



Deep Rose
upright



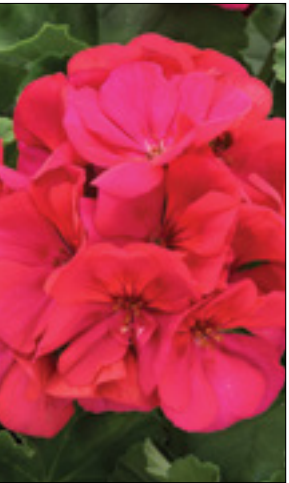
Lavender
upright



Light Pink
upright



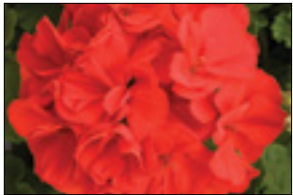
Magenta
upright



Orange
upright



Red
upright



Salmon
upright



Violet
upright



White
upright



Geranium Zonal Tango™

| |
|---|
| 34 Strip |
| Medium vigorous growth habit |
| Requires moderate use of PGRs during production |
| Dark green foliage |
| Ideal for small to large containers and baskets |

Syngenta



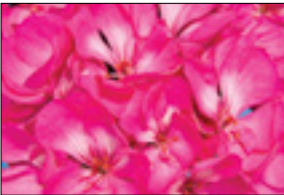
Cherry Bicolor
upright



Dark Red
upright



Deep Rose with Eye
upright



Hot Pink
upright



Neon Purple
upright



Orange
upright



Rose Mega Spash
upright



Rose Splash
upright



Salmon
upright



Tango (red)
upright



White
upright



White Splash
upright

Gerbera Cartwheel®

| |
|--|
| Mega50 |
| Strawberry Twist has a unique bicolor flower |
| Available in a large 50-cell liner for a fast-finishing 4" or 6" pot |
| Available beginning week 1 |

Syngenta



Autumn Mix
upright, 8–10"



Strawberry Twist
upright, 16–18"

Gerbera Revolution™

| |
|--|
| Mega50 |
| The Revolution line is early to flower with consistent uniformity |
| Plants are compact and short stemmed with dark green leaves |
| Flower size is 2.5" to 3" |
| Available in a large 50-cell liner for a fast-finishing 4" or 6" pot |
| Available beginning week 1 |

Collection



Bicolor Mix
upright, 8–10"



Golden Yellow with Dark Eye
upright, 8–10"



Scarlet Red with Dark Eye
upright, 8–10"

Gerbera Mega Revolution™

| |
|---|
| Mega50 |
| Early to flower with consistent uniformity |
| For use in larger pots |
| Available in a large 50 cell liner for a faster finish time |
| Available beginning week 1 |

Collection



Select Mix
upright, 12–16"

Gomphrena Pinball

| |
|---|
| 51 |
| Semi mounding habit loaded with vibrant flowers |
| Heat and drought tolerant |
| Ideal in mixed containers |

Sakata



Purple
semi-mounding, 12–18"

Helichrysum

| |
|--|
| 51 |
| Cold tolerant accent plant |
| Gives texture to combinations |
| Ideal for containers and hanging baskets |



Collection



Lemon Licorice
semi-trailing, 10–14"



Licorice
semi-trailing, 10–14"



Silverstar Westhoff
semi-trailing, 10–14" 2 cuttings per cell



Silver Threads Selecta
semi-trailing, 10–12"

Heliotrope Marino™

| |
|---|
| 51 |
| Fragrant flowers |
| Ideal for mixed containers and in the landscape |



Selecta



Blue
upright, 12–16"

Heliotrope Scentropia

| |
|--|
| 51 |
| Intensely fragrant heat loving color |
| Densely branched and big blooms make for bold containers |
| The ultimate attractor of butterflies and hummingbirds |



Syngenta



Dark Blue
upright, 12–18"

Hypoestes Splash

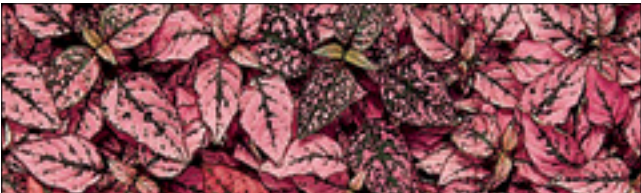
| |
|--|
| 51 |
| Growers choice for 4" pot production with an excellent shelf life |
| A colorful addition to combination planters and ideal for shaded garden beds |
| Grow in part sun |
| Multi seeds per cell |



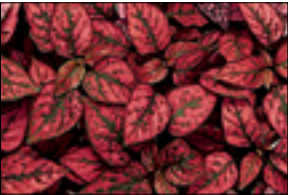
Collection



Mix (red, rose, white)
upright mounding, 10–18"



Pink
upright mounding, 10–18"



Red
upright mounding, 10–18"



White
upright mounding, 10–18"

Impatiens Double Silhouette®

| |
|---|
| 51 |
| Strong sturdy plants with very large flowers |
| Early flowering and uniform growth habit |
| Perfect choice for shaded porches or other locations with afternoon shade |
| Ideal for baskets, landscape beds, and mixed containers |

Syngenta



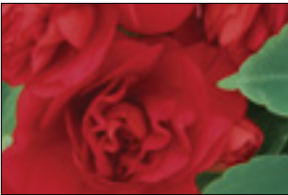
Appleblossom
mounding, 8–12"



Cherry Red
mounding, 8–12"



Purple
mounding, 8–12"



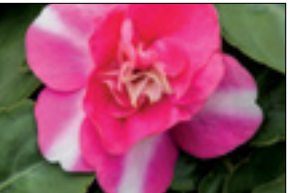
Red
mounding, 8–12"



Red Star
mounding, 8–12"



Rose
mounding, 8–12"



Rose Star
mounding, 8–12"



Salmon
mounding, 8–12"

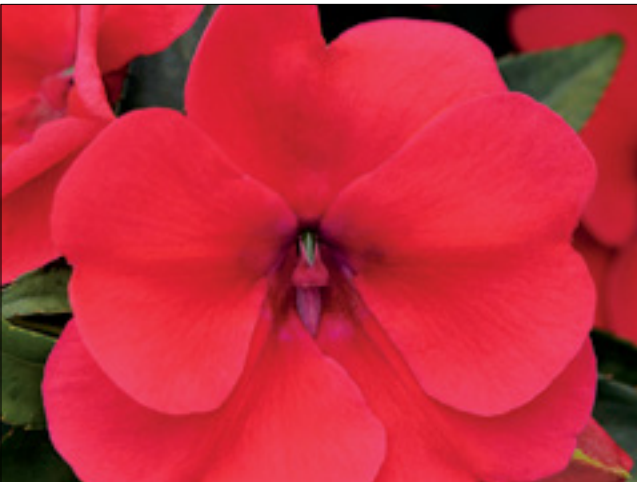


White
mounding, 8–12"

Impatiens Interspecific Bounce™

| |
|--|
| 51 |
| Moderate water needs, but more resilient than other varieties from occasional missed waterings |
| Resistant to Downy mildew |
| Beautiful and vivid color for shade |
| Also performs well in sun |

Selecta



Cherry
mounding, 14–20"



Pink Flame
mounding, 14–20"



Violet 17
mounding, 14–20"



White
mounding, 14–20"

Impatiens New Guinea Magnum

| |
|---|
| 51 |
| Stunning flower size and consistent garden performance keep this series at the top of every grower's must-have list |
| Dummen Orange |



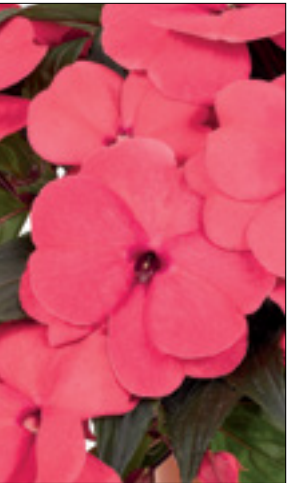
Blue
mounding, 12-18"



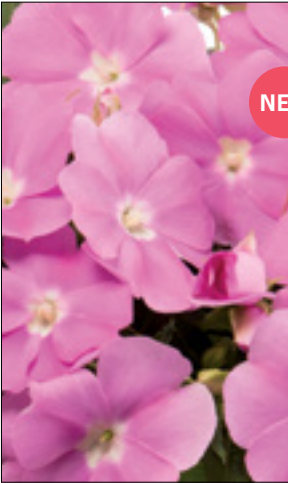
Clear Pink
mounding, 12-18"



Clear White
mounding, 12-18"



Hot Pink
mounding, 12-18"



Lavender
mounding, 12-18"



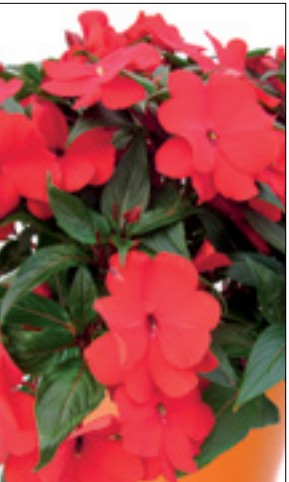
Lavender Splash
mounding, 12-18"



Orange
mounding, 12-18"



Purple
mounding, 12-18"



Red
mounding, 12-18"



Red Flame
mounding, 12-18"



Salmon
mounding, 12-18"



Wild Salmon
mounding, 12-18"

Impatiens New Guinea Sonic®

| |
|--|
| 51 |
| Extremely versatile New Guinea for various container sizes |
| Very large flower size with strong, well-branched habit |
| Award winning landscape performance |
| Syngenta |



Bright Pink
mounding, 12-14"



Light Lavender
mounding, 12-14"



Lilac
mounding, 12-14"



Pink
mounding, 12-14"



Sweet Cherry
mounding, 10-12"



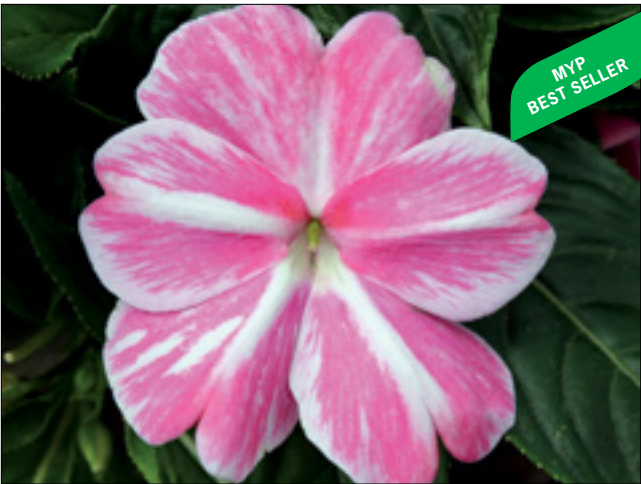
Sweet Purple
mounding, 10-12"



Deep Purple Imp
mounding, 12-14"



Deep Red
mounding, 12-14"



Magic Pink
mounding, 10-12"



Red
mounding, 12-14"



Salmon
mounding, 12-14"



Orange
mounding, 12-14"



White
mounding, 12-14"

Impatiens New Guinea Sunstanding Apollo

| |
|---|
| 51 |
| New Guinea impatiens with compact uniformity without using PGRs |
| Vibrant color selections |
| Ideal in containers and in the landscape |



Dummen Orange



Cherry
upright, 16–24"



Lilac
upright, 16–24"



Orange
upright, 16–24"



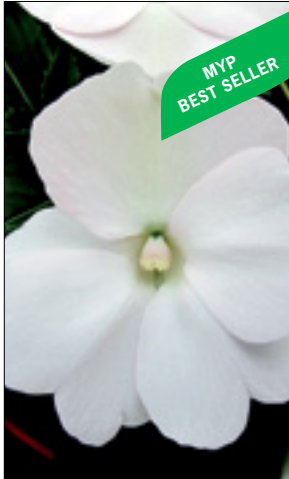
Pink
mounding, 14–16"



Ruby Red
upright, 16–24"



Purple
upright, 16–24"



White
upright, 16–24"

Impatiens New Guinea Sunstanding Helios

| |
|---|
| 51 |
| New Guinea impatiens with compact uniformity without using PGRs |
| Vibrant color selections |
| Ideal in containers and in the landscape |



Dummen Orange



Flame Orange
upright, 16–24"



Magenta Borealis
upright, 16–24"

Impatiens New Guinea Super Sonic®

| |
|---|
| 51 |
| Very vigorous plants ideal for landscaping and large containers |
| Huge flower size (up to 3 inches across) |
| Always highly rated in university and grower trials |

Syngenta



Deep Salmon
mounding, 14–16"



Deep Scarlet
mounding, 14–16"



Flame
mounding, 14–16"



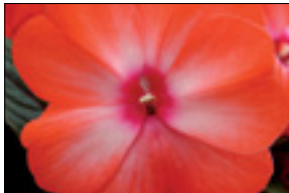
Hot Pink
mounding, 14–16"



Lilac
mounding, 14–16"



Magenta
mounding, 14–16"



Orange Ice
mounding, 14–16"



Pink
mounding, 14–16"



Red
mounding, 14–16"



Sweet Cherry
mounding, 14–16"



White
mounding, 14–16"

Impatiens SunPatiens® Compact

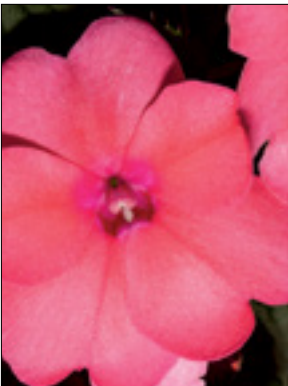
| |
|--|
| 51 |
| Thrive in full sun |
| More vigor and flower power |
| Shorter internodes and excellent branching |

G/L-green leaf
V/L-variegated leaf

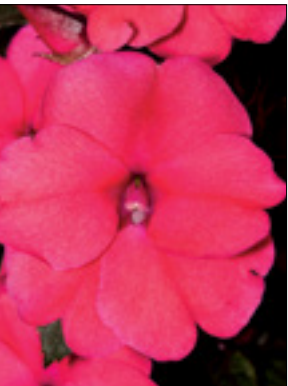
Sakata



Blush Pink G/L
mounding, 18-24"



Coral Pink G/L
upright, 16-30"



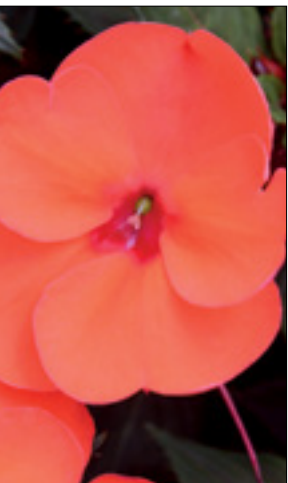
Deep Rose G/L
mounding, 18-24"



Electric Orange G/L
mounding, 18-24"



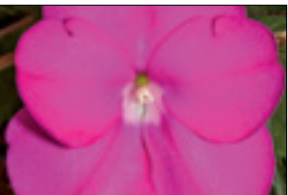
Fire Red G/L
mounding, 18-24"



Hot Coral G/L
mounding, 18-24"



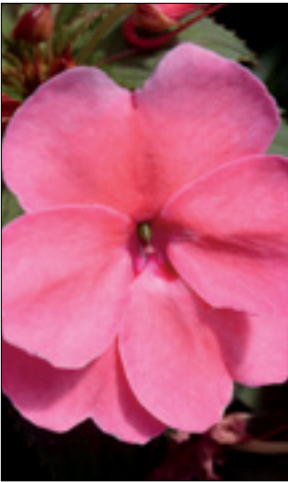
Lilac G/L
mounding, 18-24"



Neon Pink G/L
upright, 16-30"



Orchid G/L
mounding, 18-24"



Pink G/L
mounding, 18-24"



Purple G/L
mounding, 18-24"

Impatiens SunPatiens® Compact

| |
|--|
| 51 |
| Thrive in full sun |
| More vigor and flower power |
| Shorter internodes and excellent branching |

G/L-green leaf
V/L-variegated leaf

Sakata



Royal Magenta G/L
mounding, 18-24"



Tropical Rose V/L
mounding, 18-24"



White Imp G/L
mounding, 18-24"

Impatiens SunPatiens® Vigorous

| |
|---|
| 51 |
| Bold foliage that makes a big impression |
| Excellent garden vigor |
| Thrives in full sun and part-shade |
| Continuous color from Spring through hard frost |
| Can be grown under a wide temperature range |

V/L-variegated leaf

Sakata



Salmon V/L
mounding, 24-36"



Tropical Orange V/L
mounding, 20-30"



White V/L
mounding, 24-36"

Ipomoea

| |
|--|
| 51 |
| Sweet potato vine with intensely colored foliage |
| Ideal for combination pots and hanging baskets |

Collection



Blackie
trailing, 12–14"



Marguerite
trailing, 12–14"



Tricolor
trailing, 6–10"

Ipomoea Bright Lights

| |
|--|
| 51 |
| Semi-compact |
| Grower-friendly series bred to be used in combination pots and hanging baskets |

Collection



Bronze
mounding, 8–12"



Camouflage
mounding, 8–12"



Deep Purple
mounding, 8–12"

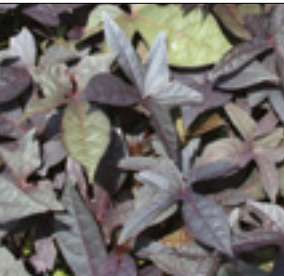


Light Green
mounding, 8–12"

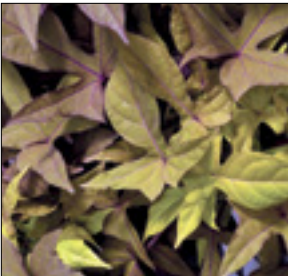
Ipomoea Sidekick™

| |
|--|
| 51 |
| Semi-compact series, sun or shade |
| Ideal for combination pots and hanging baskets |

Syngenta



Black Imp
trailing, 12–14"



Bronze
trailing, 12–14"



Heart Black
trailing, 12–14"



Heart Bronze
trailing, 12–14"



Heart Lime
trailing, 12–14"



Lacey Lime
trailing, 12–14"



Lime Imp
trailing, 12–14"

Isotoma Fizz N Pop™

| | |
|--|---------|
| 51 | Pinched |
| New Series! | |
| Nectar-rich blossoms, great for beneficial pollinating insects | |
| Bred for long season of interest in patio pots and containers | |
| Australian native | |
| Needs 12+ hours of day length to bloom | |

Plant Haven



Glowing Violet
compact rounded, 10–12"

Lantana

| | |
|---|---------|
| 51 | Pinched |
| Free-flowering plants with brilliant blooms and green foliage | |
| Full sun | |
| Ideal for mixed containers and hanging baskets | |



Syngenta



Confetti
trailing, 16–24"



Dallas Red
trailing, 16–24"



New Gold
trailing, 16–20"



Trailing Lavender
trailing, 14–20"

Lantana Bandana®Landscape

| | |
|--|---------|
| 51 | Pinched |
| A vigorous, though well-behaved, trailing habit makes this series an ideal landscape groundcover plant as well as baskets and large containers | |
| Same great attributes as the standard Bandana series | |



Syngenta



Gold
trailing, 16–20"



Pink
trailing, 16–20"



Red Imp
trailing, 16–20"



Yellow
trailing, 16–20"

Lantana Bandana®

| | |
|---|---------|
| 51 | Pinched |
| Bred to have excellent branching and upright mounding habit | |
| Large heat-tolerant flowers | |
| Ideal for mixed containers, hanging baskets, and in the landscape | |



Syngenta



Cherry
mounding, 16–20"



Cherry Sunrise
mounding, 16–20"



Orange
mounding, 16–20"



Pink
mounding, 16–20"



Red Imp
mounding, 16–20"



Rose
mounding, 16–20"



Peach
mounding, 16–20"



White
mounding, 16–20"



Yellow
mounding, 16–20"

Lantana Basket Santana™

| | |
|--|---------|
| 51 | Pinched |
| Semi-trailing structure perfect for baskets and ground cover | |
| Flowers are long lasting and rain resistant | |



Danziger



Gold
semi-mounding, 15–18"



Red Orange
semi-mounding, 15–18"

Lantana Havana

| | |
|---|---------|
| 51 | Pinched |
| New Series! | |
| Well-branched with dense foliage and increased flower count | |
| Reduced flower cycling | |
| Uniformity in production is maintained through maturity | |



Dummen Orange



Cherry
mounding, 12–24"



Flame
mounding, 12–24"



Sunshine
mounding, 12–24"

Lobelia Magadi™

| |
|--|
| 51 |
| Brilliant color with thick branching and early-flowering |
| The compact types are ideal for small pots that generate high impulse buys |
| Heat tolerant |
| Best grown in part to full sun |

Selecta



Basket Dark Blue
semi-trailing, 12–18"



Basket Dark Purple 19
semi-trailing, 12–18"



Basket White
semi-trailing, 12–18"



Compact Blue
mounding, 8–10"



Compact Blue + Eye
mounding, 8–12"



Compact White
mounding, 8–10"



Dark Blue
mounding, 8–12"



Electric Blue
mounding, 8–12"



Electric Purple
mounding, 8–12"

Lobelia Techno®

| |
|--|
| 51 |
| Early flowering series |
| Fast growers that fill containers quickly |
| Best for quart to 6" containers |
| The Heat types are bred for exceptional heat tolerance and flowering throughout the summer |

Syngenta



Blue
semi-trailing, 6–10"



Heat Dark Blue
trailing, 6–10"



Heat Electric Blue
trailing, 6–10"



Heat Light Blue
trailing, 6–10"



Heat Upright Blue
upright, 8–12"



Heat Upright Cobalt Blue
upright, 8–12"



Heat Upright Dark Blue
upright, 8–12"



Heat Upright Delft Blue
upright, 8–12"



Heat Upright Light Blue Imp
upright, 8–12"



Heat Upright Purple
upright, 6–10"



Heat Upright White
upright, 8–12"



Heat Violet
trailing, 6–10"



Heat White
trailing, 6–10"

Lobularia Stream™

| | |
|---|---------|
| 51 | Pinched |
| Fast growing ball-shaped plant that is heat tolerant | |
| Grows through the entire summer and is ideal for mixed containers | |
| Abundant blooms | |
| Fragrant | |



Danziger



Lavender
trailing, 4–8"



Raspberry
trailing, 4–8"



Silver
trailing, 4–8"

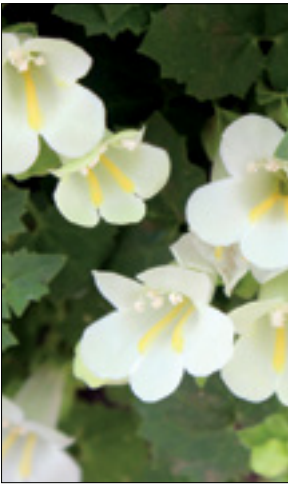
Lophospermum Lofos®

| | |
|---|---------|
| 51 | Pinched |
| A cascading vine with large tubular flowers | |
| Early blooms continue throughout the summer | |
| Ideal for hanging baskets and window boxes | |

Suntory



Compact Rose
trailing, up to 24"



Compact White
trailing, up to 24"

Lobularia Yolo

| | |
|---|---------|
| 51 | Pinched |
| Compact, tidy series with strong dark foliage | |
| Flowers all summer long | |
| Great for both combos and landscapes and even as a stand-alone! | |
| Honey-like fragrance | |
| Heat tolerant | |



Dummen Orange



Lavender 2016
mounding, 6–12"



White
mounding, 6–12"

Lysimachia

| | |
|--|---------|
| 51 | Pinched |
| Creeping plant that spreads rapidly and is an excellent ground cover | |
| Congestiflora produces small yellow flowers all summer long | |
| Ideal for ground cover, baskets, and mixed containers | |

Collection



congestiflora Golden Globes
semi-trailing, 4–6"



congestiflora Variegated Lemon
semi-trailing, 4–6"



nummularia Goldilocks
trailing, 6–12"

Mecardonia Magic Carpet™

| | |
|---|---------|
| 51 | Pinched |
| A tough, durable plant that looks beautiful in containers or along garden paths | |
| Blooms all season long with bright yellow flowers | |
| Tolerates both heat and light frost | |



Sakata



Yellow
semi-mounding, 4–6"

Nemesia Babycakes

| | |
|--|---------|
| 51 | Pinched |
| Ideal for 4" pots or in hanging baskets | |
| Most disease-resistant interspecific nemesia | |
| Grows best in full sun | |
| Heat tolerant, well-branched compact series | |

Kientzler



Little Banana
upright, 6–12"



Little Cherry
upright, 6–12"



Little Orange
upright, 6–12"

Nemesia Nesia™

| | |
|---------------------------------------|---------|
| 51 | Pinched |
| Large, striking colorful flowers | |
| Compact upright/mounding growth habit | |
| Ideal for pots and mixed containers | |

Danziger



Burgundy
mounding, 12–14"



Dark Blue
mounding, 12–14"



Snow Angel
mounding, 12–14"



Sunshine
mounding, 12–14"

Osteospermum 4D™

| |
|-------------------------------------|
| 51 |
| Less vigorous than the 3D series |
| The double flowers remain open 24/7 |
| Grow in full sun |

Selecta



Berry White
mounding, 8–12"



Silver
mounding, 8–12"

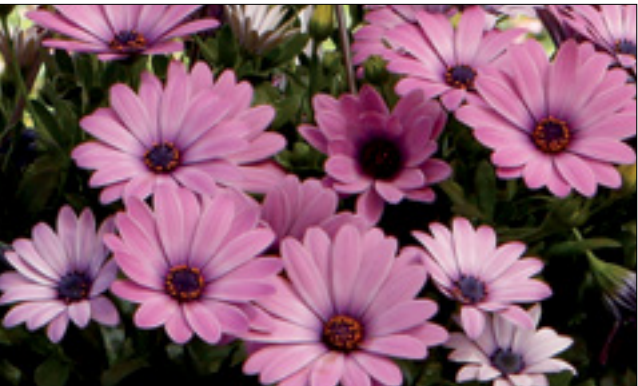


Sunburst
mounding, 8–12"

Osteospermum Daisy Falls™

| |
|---|
| 51 |
| Great new series for early basket sales |
| Flowers like traditional osteos on a trailing frame |
| Stand alone variety or does well in mixes |

Selecta



Pink
trailing, 8–12"



Purple
trailing, 8–12"



White Amethyst
trailing, 8–12"

Osteospermum Margarita®

| |
|--|
| 51 |
| Compact varieties with short flower stems |
| Little or no PGRs needed |
| Great performance in full heat conditions |
| Ideal for use in pots, mixed containers, and baskets |

Dummen Orange



Bronze Bicolor
upright, 12–16"



Orange Flare
upright, 12–16"



Rioja Red
upright, 12–16"



Dark Pink
upright, 12–16"



Purple
upright, 12–16"



Yellow
upright, 12–16"

Osteospermum Ostica™

| |
|--|
| 51 |
| A vibrantly colored series with an early-flowering, compact growth habit |
| No cooling necessary |
| Great for quart production |
| Grow in full sun to part shade |

Danziger



Bronze
mounding, 12–14"



Glamour Yellow
mounding, 16–24"



Pink Imp
mounding, 14–20"



Purple Eye
mounding, 14–20"



Purple Imp
mounding, 14–20"

Osteospermum Osticade™

| |
|--|
| 51 |
| Vigorous growth and trailing habit |
| Works best in full sun |
| Great for hanging baskets and window boxes |



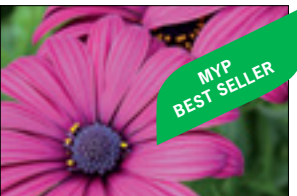
Danziger



Lemon
trailing, 10–12"



Pink
trailing, 10–12"



Purple
trailing, 10–12"



White Blush
trailing, 10–12"

Osteospermum Tradewinds®

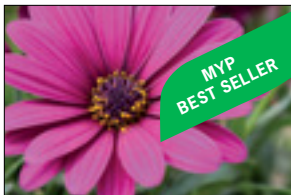
| |
|---|
| 51 |
| Easy to grow with excellent branching and compact habit |
| Exceptional heat tolerance |
| Less vernalization required than other types |
| Ideal for combination planters and pots |



Syngenta



Cinnamon
upright, 10–14"



Deep Purple
upright, 10–14"



Lemon Zest
upright, 10–14"



Light Purple Imp
upright, 10–14"



White Imp
upright, 10–14"

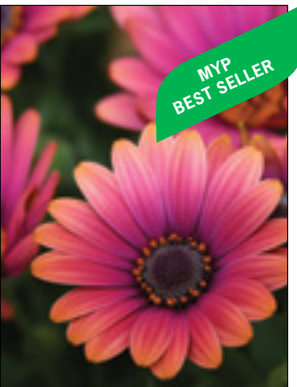


Yellow Imp
upright, 10–14"

Osteospermum Zion™

| |
|--|
| 51 |
| Large, uniquely colored blooms inspired by Utah's Zion National Park |
| Excellent branching, these plants have outstanding customer appeal |
| Flower best when grown cool |
| An early-season sales series |
| 'Pure Yellow' is the truest yellow Osteospermum on the market |
| Full sun |

Selecta



Copper Amethyst
upright, 16–20"



Denim Blue
upright, 16–20"



Pure Yellow
upright, 16–20"

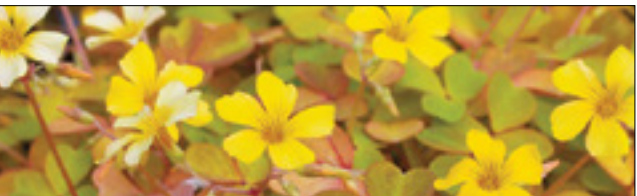


Red 17
upright, 16–20"

Oxalis

| |
|--|
| 51 |
| In low light, the shamrock-shaped foliage is chartreuse; in sunnier locations it turns a rich orange |
| Flowers are small and yellow |
| Great for pot culture and combinations |

Collection



Sunset Velvet
mounding, 12–16"

Pentas Falling Star™

| |
|---|
| 51 |
| First trailing pentas |
| Great for summer mono baskets or combination planters |
| Excellent heat tolerance |

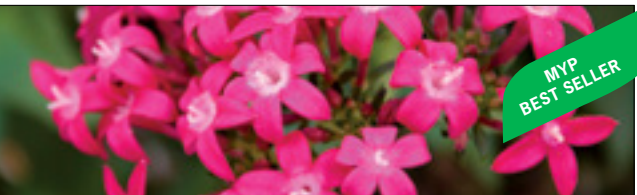
Syngenta



Pink Bicolor
trailing, 8–12"



Red
trailing, 8–12"



Rose
trailing, 8–12"

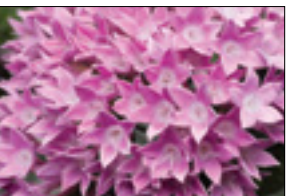
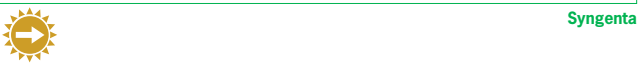


White
trailing, 8–10"

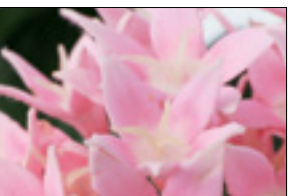
Pentas Starcluster™

| |
|---------------------------------|
| 51 |
| Good blooming uniformity |
| Strong stem quality |
| Large flower clusters |
| An anchor for butterfly gardens |

Syngenta



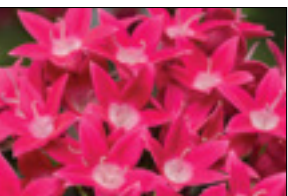
Lavender
upright, 18–22"



Pink
upright, 18–22"



Red Imp
upright, 18–22"



Rose
upright, 18–22"



Violet
upright, 18–22"

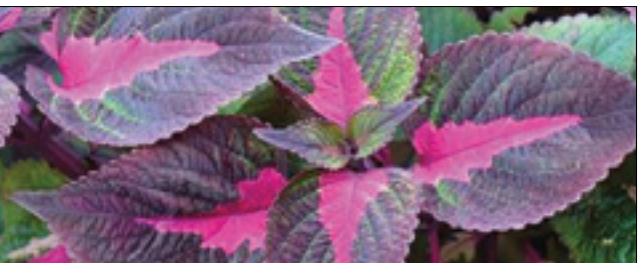


White
upright, 18–22"

Perilla

| |
|--|
| 51 |
| Vigorous and fast growing plant with multicolored leaves |
| Well-branched and holds up to summer heat |
| Ideal for mixed containers and in the landscape |

Collection



Tricolor
upright, 24–36"

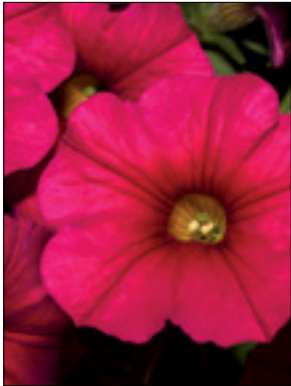
Petchoa SuperCal®

| |
|--|
| 51 |
| Hybrid of petunia and calibrachoa |
| Unique flower colors |
| Foliage is not sticky like petunias |
| Greater pH tolerance than calibrachoas |

Sakata



Blue
mounding, 10–12"



Cherry Imp
mounding, 10–12"



Crimson Red
mounding, 10–12"



Pink
mounding, 10–14"



Premium Bordeaux
mounding, 14–20"



Premium Caramel Yellow
mounding, 14–20"



Premium Cinnamon
mounding, 14–20"



Premium Sunray Pink
mounding, 14–20"

Petunia Amore

| |
|---|
| 51 |
| Abundance of large colorful flowers with heart shapes on every flower |
| Ideal in baskets or mixed containers |

Danziger



Purple - Premium
mounding, 12–15"



Queen of Hearts - Premium
mounding, 12–15"

Petunia Cascadias™

| |
|-------------------------|
| 51 |
| Vigorous spreading form |
| Well-branched habit |
| All season bloomer |

Danziger



Autumn Mystery - Premium
semi-trailing, 12–14"



Bicolor Cabernet
semi-trailing, 12–14"



Indian Summer - Premium
semi-trailing, 12–14"



Pitaya
semi-trailing, 12–14"



Purple Gem
semi-trailing, 12–14"



Rim Magenta - Premium
semi-trailing, 12–14"



Rim Violet
semi-trailing, 12–14"

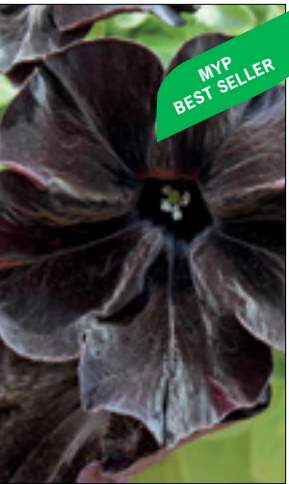
SuperCal Petchoa Production Guide

| Variety | Earliness | Habit | Bloom Size | Vigor |
|------------------------|------------|---------------|------------|---------|
| Blue | Average | Semi-Mounding | Large | Strong |
| Cherry Imp | Very Early | Semi-Mounding | Medium | Strong |
| Crimson Red | Very Early | Semi-Mounding | Large | Strong |
| Pink | Very Early | Semi-Mounding | Large | Strong |
| Premium Bordeaux | Early | Mounding | Large | Average |
| Premium Caramel Yellow | Early | Mounding | Large | Average |
| Premium Cinnamon | Early | Mounding | Large | Average |
| Premium Sunray Pink | Early | Mounding | Large | Average |

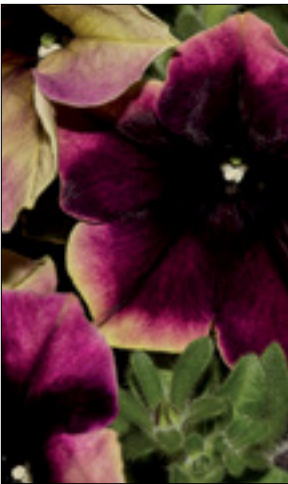
Petunia Crazytunia®

| |
|---|
| 51 |
| This is a collection of novelty colors and not a series, so habits may vary |
| Unique flowers which can appear different under different conditions |
| Great garden and pot performance |

Westhoff



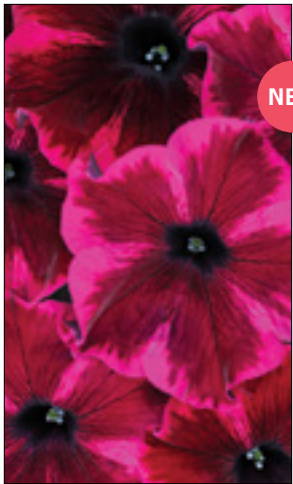
Black Mamba - Premium
mounding, 10-12"



Blackberry Cheesecake - Premium
trailing, 12-16"



Blue Ice - Premium
mounding, 8-12"



Cosmic Purple - Premium
mounding, 8-12"



Knight Rider - Premium
mounding, 8-12"



Lucky Lilac - Premium
mounding, 8-12"



Mandeville - Premium
mounding, 8-12"



Moonstruck - Premium
mounding, 8-12"



Passion Punch - Premium
mounding, 8-12"



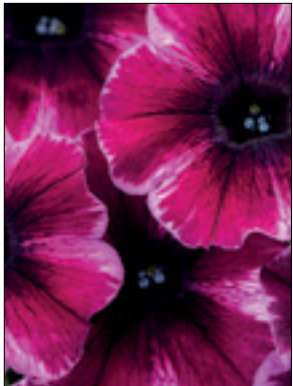
Pulse - Premium
mounding, 8-12"



Red Blues - Premium
mounding, 8-12"



Sugar Beet - Premium
mounding, 8-12"



Ultra Violet - Premium
mounding, 12-18"

Petunia Dekko™

| |
|---|
| 51 |
| A great garden performance petunia series |
| A wide range of core and unique colors are perfect for adding wow to combos and baskets |
| Versatile habits work well in many pot sizes |

Syngenta



Blue
spreading, 8-12"



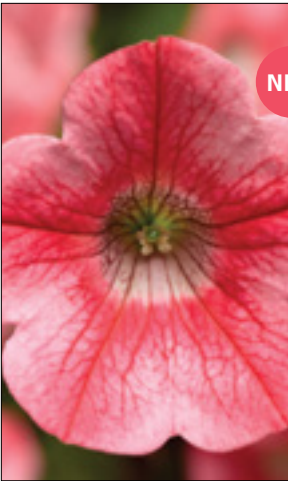
Dark Lavender
spreading, 8-12"



Red
spreading, 8-12"



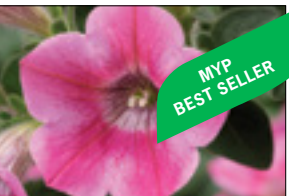
Salmon
spreading, 8-12"



Star Coral
spreading, 8-12"



Sky Blue Imp
spreading, 8-12"



Star Rose
spreading, 8-12"



White
spreading, 8-12"

Petunia Double Double Wave®

| |
|--|
| 51 |
| Vigorous plant habit with double-flowered blooms |
| Wide range of colors |
| Ideal for basket production and as a bedding plant |

Collection



Blue Vein - Premium
trailing, 6-10"



Pink - Premium
trailing, 6-10"



Purple - Premium
trailing, 8-12"



Red - Premium
trailing, 8-12"



Velvet Blue - Premium
trailing, 6-10"



White - Premium
trailing, 6-10"

Petunia Headliner™

| |
|---|
| 51 |
| Headliner boasts a range of vibrant colors on a compact, mounding habit |
| Very early flowering with outstanding performance |

Selecta



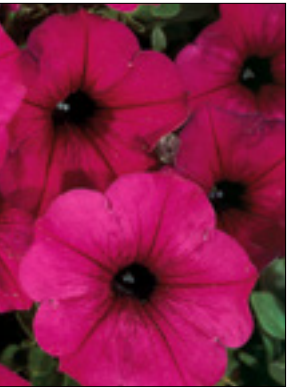
Banana Cherry Swirl
mounding, 10–16"



Blueberry Swirl
mounding, 10–16"



Dark Violet Picotee
mounding, 10–16"



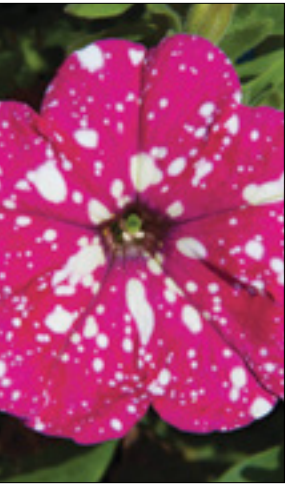
Electric Purple
mounding, 10–16"



Lipstick
mounding, 10–16"



Night Sky - Premium
mounding, 10–16"



Pink Sky - Premium
mounding, 10–16"



Pink Star
mounding, 10–16"



Raspberry Star
mounding, 10–16"

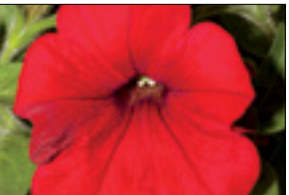


Raspberry Swirl 19
mounding, 10–16"

Petunia Headliner™

| |
|---|
| 51 |
| Headliner boasts a range of vibrant colors on a compact, mounding habit |
| Very early flowering with outstanding performance |

Selecta



Red
semi-trailing, 10–16"



Red Star
mounding, 10–16"



Rose Star
mounding, 10–16"



Starry Sky Burgundy - Premium
mounding and spreading, 10–16"



Violet Dark Eye
mounding, 10–16"



Yellow
mounding, 10–16"

Petunia Peppy

| |
|---|
| 51 |
| Star petunias with zing |
| Plants have a vigorous mounding habit with good branching |

Dummen Orange



Blue
mounding, 10–14"



Pink 2017
mounding, 10–14"



Red 2018
mounding, 10–14"



Sunset
mounding, 10–14"

Petunia Potunia®

| |
|---------------------------------------|
| 51 |
| Compact, round habit |
| Very early to flower and easy to grow |



Dummen Orange



MYP
BEST SELLER

Blueberry Muffin 2018
mounding, 6-8"



Cappuccino
mounding, 6-8"



NEW

Coral 2019
mounding, 6-8"



Dark Red
mounding, 6-8"



MYP
BEST SELLER

Purple Halo
mounding, 6-8"



Starfish
mounding, 6-8"

Petunia Potunia® Plus

| |
|--|
| 51 |
| Potunia Plus are slightly more vigorous than Potunia |
| Early to flower and easy to grow |



Dummen Orange



MYP
BEST SELLER

Pinkalicious
mounding, 6-8"



Purple
mounding, 6-8"



Red
mounding, 6-8"



White
mounding, 6-8"



Yellow 2017
mounding, 6-8"

Petunia Ray™

| |
|---------------------------------------|
| 51 |
| Early large flowers |
| Works well in a variety of containers |



Danziger



MYP
BEST SELLER

Black Ray™ - Premium
mounding, 8-12"



Bordeaux Ray™ - Premium
mounding, 8-12"



Classic Blue Ray™
mounding, 8-12"



Pink Halo Ray™
mounding, 12-14"



Purple Vein Ray™
mounding, 8-12"



Red Ray™
mounding, 8-12"



MYP
BEST SELLER

Sunflower Ray™ - Premium
mounding, 8-12"



Sunshine Ray™
mounding, 8-12"



White Ray™
mounding, 8-12"

Petunia Sanguna®

| |
|------------------------------------|
| 51 |
| Excellent branching |
| Mass flower appeal |
| Vigorous habit with large coverage |



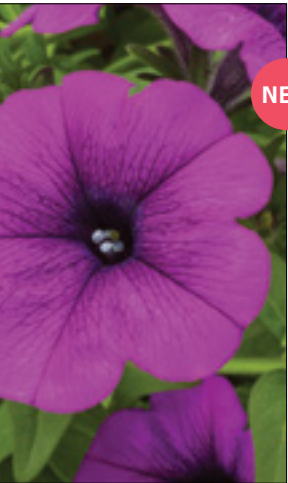
Blue Imp
semi-trailing, 10–14"



Blue Vein
trailing, 10–14"



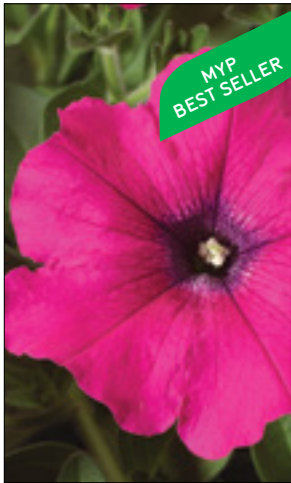
Burgundy
trailing, 10–14"



Deep Lavender Vein
trailing, 10–14"



Hot Rose
semi-trailing, 10–16"



Lipstick Imp
trailing, 10–14"



Mega Purple
trailing, 10–14"



Picotee Punch Imp
trailing, 10–14"



Pink Vein
trailing, 10–14"



Radiant Blue
trailing, 12–18"



Red Imp
trailing, 10–14"

Petunia Sanguna®

| |
|------------------------------------|
| 51 |
| Excellent branching |
| Mass flower appeal |
| Vigorous habit with large coverage |



Rose
trailing, 10–14"



Rose Vein Imp
trailing, 10–16"



Sweet Pink
trailing, 10–14"



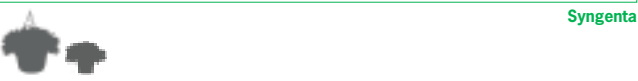
White Vein
trailing, 10–14"



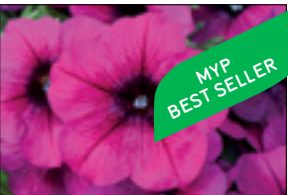
Yellow
trailing, 10–14"

Petunia Sanguna® Patio

| |
|---|
| 51 |
| Bred for tight spacing |
| Abundant flowering |
| Great choice for season-long color in the landscape |
| Great performance for late season production |



Blue
upright, 10–12"



Purple
upright, 10–12"



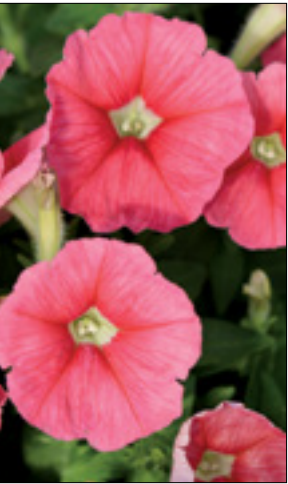
Radiant Dark Blue
upright, 10–12"



Radiant Rose
upright, 10–12"



Red
upright, 10–12"



Salmon
upright, 10–12"

Petunia Starlet™

| |
|--|
| 51 |
| Starlet™ is exceptionally uniform in vigor, timing, and habit |
| This series does very well in small baskets and combination containers and is early to flower and early to sell! |

Selecta



Blue
mounding, 6–10"



Burgundy
mounding, 6–10"



Carmine Star
mounding, 6–10"



Lavender Star 19
mounding, 6–10"



Magenta Star
mounding, 6–10"



Pink Lemonade
mounding, 6–10"



Pinot Red
mounding, 6–10"



Purple Star
mounding, 6–10"



Velvet
mounding, 6–10"



White
mounding, 6–10"

Petunia Surfinia®

| |
|--------------------------------|
| 51 |
| Blooms continuously all season |
| Rain, wind and heat tolerant |
| Brilliant cascading plant |

Suntory



Deep Red - Premium
trailing, 14–18"



Heartbeat - Premium
mounding and trailing, 8–12"



Heavenly Blue - Premium
trailing, 14–18"



Wild Plum - Premium
trailing, 14–18"

Petunia Surfinia®
Sumo

| |
|---|
| 51 |
| Bigger, fuller, and more vigorous habit than Surfinia |
| Very large flowers make a high impact in landscape beds, hanging baskets, and bigger containers |
| Best for 6" pots and larger |

Suntory



Bold Lilac - Premium
trailing, 16–20"



Pink - Premium
trailing, 16–20"



Plum - Premium
trailing, 16–20"

Petunia Surprise

| |
|---|
| 51 |
| The Surprise series offers a nice array of color with early flowering |
| Spreading habit |
| Medium vigor |

Dummen Orange



Amethyst Halo
spreading, 8–12"



Blue Sky
spreading, 8–12"



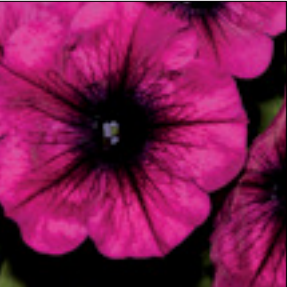
Burgundy Star
spreading, 8–12"



Grape
spreading, 8–12"



Hot Pink
spreading, 8–12"



Kardinal
spreading, 8–12"



Magenta Halo
spreading, 8–12"



Moonlight Bay
spreading, 8–12"



Purple Dance
spreading, 8–12"



Red
spreading, 8–12"



White
spreading, 8–12"



Yellow
spreading, 8–12"

Petunia Sweetunia®

| |
|--|
| 51 |
| Unique flowers with medium, upright growth |
| Sturdy plants with loads of color |

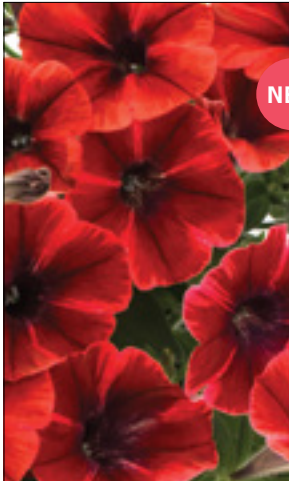
Dummen Orange



Black Satin - Premium
upright, 8–12"



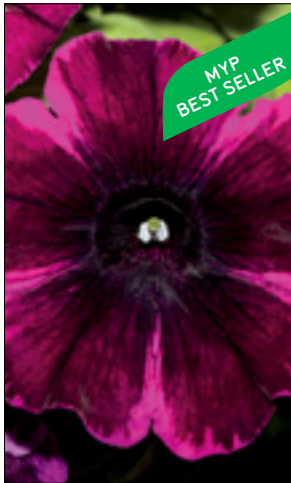
Coral Flash
upright, 8–12"



Fiona Flash - Premium
upright, 8–12"



Hot Pink Lemonade
upright, 8–12"



Johnny Flame - Premium
upright, 8–12"



Lavender Shimmer
upright, 8–12"



Light Pink Touch
upright, 8–12"



Miss Marvelous - Premium
upright, 8–12"



Pink Touch
upright, 8–12"



Suzie Storm - Premium
upright, 8–12"



Velveteen 2018 - Premium
upright, 8–12"

Phlox Gisele™

| |
|---|
| 51 |
| Large flower clusters make a great presentation and fills landscapes with lots of color |
| Strong summer performance that lasts until fall |

Selecta



Hot Pink
upright, 10–12"



Light Violet
upright, 10–12"

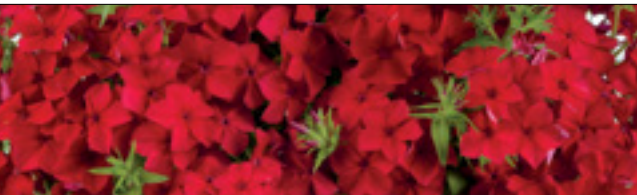


Pink
upright, 10–12"

Phlox Phloxstar™

| |
|--------------------------------------|
| 51 |
| Incredible bright red blast of color |
| Great in quarts |
| Excellent summer performance |

Danziger



Red
upright, 10–12"



Salmon
upright, 10–12"

Plectranthus

| | |
|--|---------|
| 51 | Pinched |
| Fragrant with variegated leaves | |
| Ideal for mixed containers and hanging baskets | |

Collection



coleoides Variegata
trailing, 8–14"

Portulaca ColorBlast

51

Pinched

The ColorBlast series sets a new standard for drought-tolerant color

The vivaciously colored singles will bring a lot of excitement to garden beds

Westhoff



Lemon Twist
trailing, 10–16"



Mango Mojito
trailing, 10–16"



Pink Lady
trailing, 10–16"



Rum Punch
trailing, 10–16"



Watermelon Punch
trailing, 10–16"

MYP
BEST SELLER

Portulaca ColorBlast Double

51

Pinched

Fully explosive double flowers brings excitement to baskets as well as garden beds

Double flowers do not close up as much at night like singles do

Westhoff



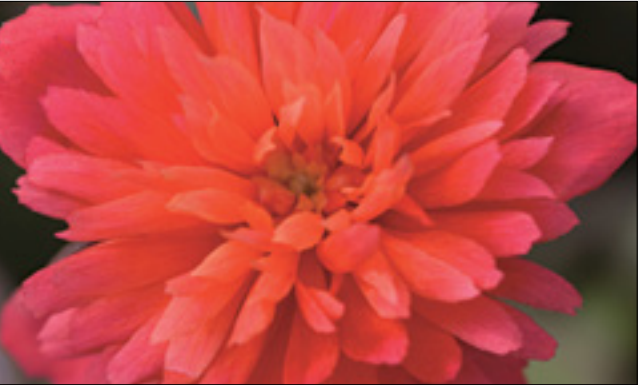
Double Guava
trailing, 10–16"



Double Magenta
trailing, 10–16"



Double Orange
trailing, 10–16"



Double Scarlet
trailing, 10–16"



Double Yellow
trailing, 10–16"

Portulaca Pazzaz™ Nano

51

Pinched

Large flowers, thick stems, and big leaves on a more compact and mounded growth habit than Pazzaz™

Great for quarts and hanging baskets

Danziger



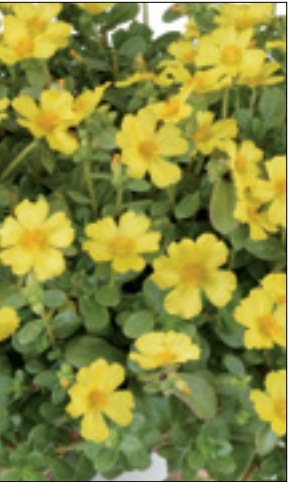
Fuchsia
semi-trailing, 6–10"



Hot Pink
semi-trailing, 6–10"



Orange
semi-trailing, 6–10"



Yellow
semi-trailing, 6–10"

Portulaca Samba

51

Pinched

Moss rose plants resemble miniature roses

Flowers close under low light conditions

Ideal for bedding plants, mixed containers and hanging baskets

Collection



Pink Bicolor
trailing, 8–12"



Rose
trailing, 8–12"

MYP
BEST SELLER

Salvia farinacea Candle

| | |
|---|---------|
| 51 | Pinched |
| Excellent basal branching | |
| Extremely floriferous | |
| Consistently in bloom in the landscape from June through August | |



Kientzler



Light
upright, 12–18"



Midnight
upright, 12–18"



White
upright, 12–18"

Salvia farinacea

| | |
|--|---------|
| 51 | Pinched |
| Early bloomer with a quick finish time | |
| Features large flower spikes | |
| Great garden performer | |
| Excellent for height in containers | |



Syngenta



Velocity™ Blue
upright, 12–18"

Salvia splendens

| | |
|-----------------------------------|---------|
| 51 | Pinched |
| A fantastic, self-cleaning salvia | |
| Requires zero deadheading | |
| Thrives in sun and heat | |
| Full sun or part shade | |



Cultivaris



Saucy™ Coral
upright, 24–30"



Saucy™ Purple
upright, 24–30"



Saucy™ Red
upright, 24–30"

Salvia guaranitica

| | |
|--|---------|
| 51 | Pinched |
| A must for any garden with its brilliant color and performance | |
| Great for attracting hummingbirds | |
| Ideal for beds and mixed containers | |



Collection



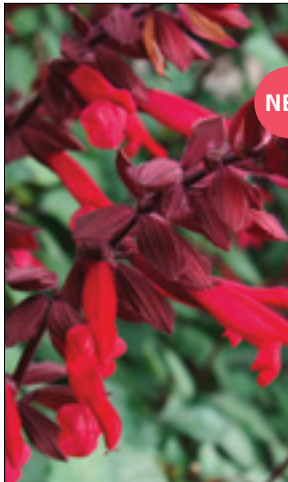
Black & Blue
upright, 18–30"

Scaevola Interspecific Skyscraper™

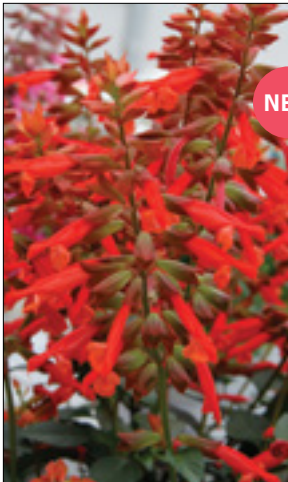
| | |
|---|---------|
| 51 | Pinched |
| New Series! | |
| Nice medium vigor, rounded habit with attractive dark green foliage | |
| Great for late-spring to fall sales | |



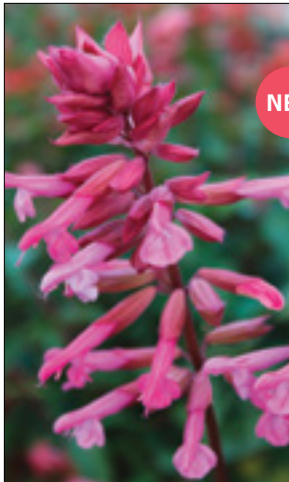
Selecta



Dark Purple
upright, 14–28"



Orange
upright, 14–28"



Pink
upright, 14–28"

Scaevola

| | |
|-------------------------------------|---------|
| 51 | Pinched |
| Early to flower and flowers heavily | |
| Ideal in quarts or gallons | |



Danziger



Purple Haze
upright, 12–14"

Scaevola Bombay®

| | |
|--|---------|
| 51 | Pinched |
| Very good branching with consistent semi-trailing and trailing growth habits | |
| Thrives in bright, sunny locations with nonstop color | |
| Great for combination planters | |



Syngenta



Dark Blue Imp
trailing, 8–12"



Pink Imp
trailing, 8–12"



White Imp
trailing, 8–12"

Scaevola Scalora®

| | |
|--|---------|
| 51 | Pinched |
| Thrives in bright sunny locations | |
| Great for hanging baskets and combination planters | |



Westhoff



Diamond
semi-trailing, 8–12"



Pearl
trailing, 8–12"



Suntastic® Imp
trailing, 12–18"

Setcreasea

| |
|--|
| 51 |
| Trailing vine grown for its foliage; ideal for combinations or in the garden |
| Beautiful contrast or accent plant |
| Note: Variegated will have some completely solid purple leaves - see photo |



Collection



Purple
trailing, 12–18"



Purple Variegated
trailing, 8–12"

Scaevola Surdiva

| |
|---|
| 51 |
| Fresh new scaevola breeding providing richer colors than has previously been seen |
| Compact and branching |
| Exceptional heat tolerance |



Suntory



Blue Violet
semi-trailing, 8–12"



Fashion Pink
semi-trailing, 8–12"

Streptocarpella

| |
|---|
| 51 |
| Rich green foliage on a prostrate habit with small blue flowers |
| Ideal for hanging baskets and containers |
| Grows well in the shade |

Collection



Concord Blue
upright, 6–10"

Strobilanthus

| |
|---|
| 51 |
| Tropical shrub that is grown primarily for its attractive iridescent purple foliage |
| Ideal for pots and mixed containers |

Collection



Persian Shield
upright, 10–18"

Talinum

| |
|---|
| 51 |
| Heat and drought tolerant |
| Ideal for mixed containers and in flower beds |

Collection



Limón
upright, 24–36"

Torenia Moon®

| | |
|---|---------|
| 51 | Pinched |
| Striking vivid flowers on compact plants | |
| Ideal for mixed containers and in flower beds | |
| Can be grown in shade or part sun | |

Danziger



Blue
semi-trailing, 8–12"



Indigo
semi-trailing, 6–8"



Purple
semi-trailing, 8–12"



Rose
semi-trailing, 8–12"



White
semi-trailing, 8–12"



Yellow
semi-trailing, 6–8"

Verbena Blues

| 51 | Pinched |
|--|---------|
| Attractive eye patterns create winning components for mixed combos | |
| Strong branching | |
| Grow in full sun | |



Selecta



Lavender + Eye
mounding, 10–12"



Light Pink + Eye
mounding, 10–12"



Neon
mounding, 10–12"



Red
mounding, 10–12"



White
mounding, 10–12"

Verbena Empress Flair

| 51 | Pinched |
|---|---------|
| Compact upright habit | |
| Showy clusters of flowers with contrasting eyes and dense foliage | |
| Fade resistant blooms from late spring to early October | |
| Best grown in full sun in containers and hanging baskets | |



Dummen Orange



Blue Charme
semi-upright, 10–12"



Burgundy
semi-upright, 10–12"



Cherry Charme
semi-upright, 10–12"

Verbena Empress Flair

| 51 | Pinched |
|---|---------|
| Compact upright habit | |
| Showy clusters of flowers with contrasting eyes and dense foliage | |
| Fade resistant blooms from late spring to early October | |
| Best grown in full sun in containers and hanging baskets | |



Dummen Orange



Miss Marvelous
semi-upright, 10–12"



Pink Charme
semi-upright, 10–12"



Red
semi-upright, 10–12"



Violet Blue
semi-upright, 10–12"



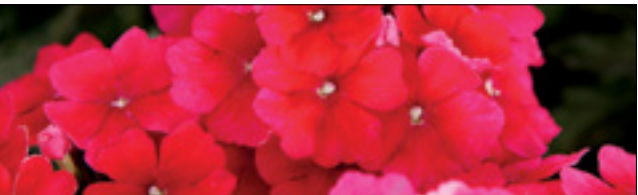
White
semi-upright, 10–12"

Verbena Empress Sun

| 51 | Pinched |
|--|---------|
| Excellent landscaper series | |
| Uniform habit among all colors | |
| Selected for performance in high heat and humidity | |
| Constant color - no cycling of blooms | |



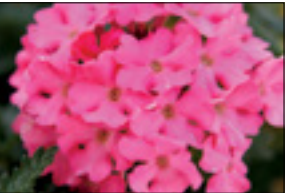
Dummen Orange



Cherry
semi-trailing, 12–15"



Lavender Charme
semi-trailing, 12–15"



Pink
semi-trailing, 12–15"



Pink Star
semi-trailing, 12–15"



Red Imp
semi-trailing, 12–15"



Violet
semi-trailing, 12–15"

Verbena Lanai®

| | |
|---|---------|
| 51 | Pinched |
| Early and continuous flowering | |
| Excellent mildew resistance | |
| Ideal for beds, hanging baskets, and mixed containers | |

Syngenta



Blue
trailing, 6–10"



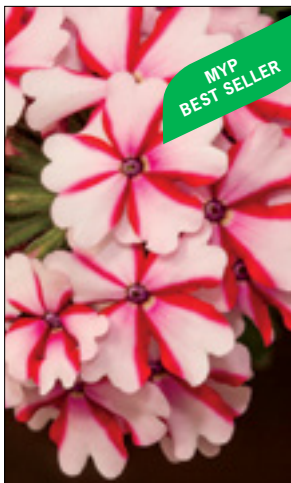
Blue Denim
trailing, 6–10"



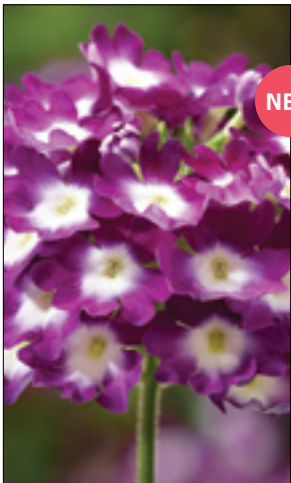
Blue Eyes
trailing, 8–13"



Bright Eye
trailing, 6–10"



Candy Cane Imp
trailing, 6–10"



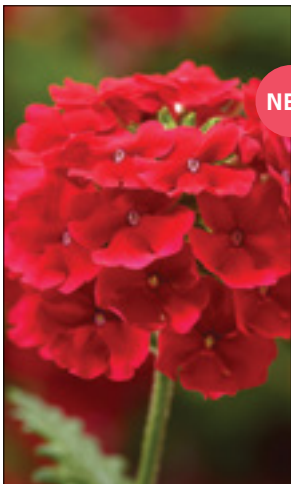
Cyclops Purple
trailing, 6–10"



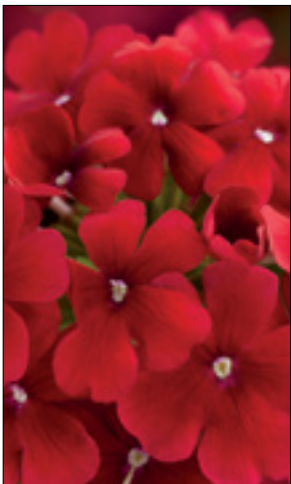
Deep Pink
trailing, 6–10"



Deep Purple
trailing, 6–10"



Deep Scarlet
trailing, 6–10"



Early Dark Red
trailing, 6–10"



Magenta
trailing, 6–10"

Verbena Lanai®

| | |
|---|---------|
| 51 | Pinched |
| Early and continuous flowering | |
| Excellent mildew resistance | |
| Ideal for beds, hanging baskets, and mixed containers | |

Syngenta



Peach
trailing, 6–10"



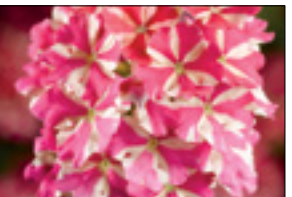
Pink
trailing, 6–10"



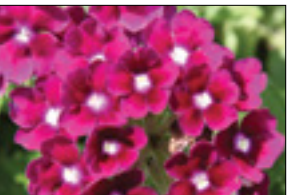
Purple Star
trailing, 6–10"



Red
trailing, 6–10"



Red Star
trailing, 6–10"



Royal Purple with Eye
trailing, 6–10"



Sky Blue
trailing, 6–10"



Strawberry
trailing, 6–10"



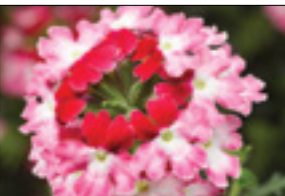
Twister™ Burgundy Imp
trailing, 6–10"



Twister™ Pink
trailing, 8–12"



Twister™ Purple
trailing, 6–10"



Twister™ Red
trailing, 6–10"





Vintage
trailing, 8–13"



White
trailing, 6–10"

Verbena Lanai® Compact

| 51 | Pinched |
|---|---------|
| Perfect variety for both grower and consumer with a compact habit and early to flower | |
|   | |



Lime Green
semi-mounding, 6-10"



Red Star
trailing, 4-6"





Twister Purple
trailing, 4-6"



White
trailing, 4-6"

Verbena Lanai® Upright

| 51 | Pinched |
|---|---------|
| Perfect variety for both grower and consumer with a compact habit | |
| Early and continuous flowering | |
| Excellent mildew resistance | |
| Upright varieties bred for pot type production | |
| Ideal for beds and mixed containers | |
|   | |



Limoncello
upright, 8-12"



Purple Mosaic
upright, 8-12"



Twister Purple
upright, 8-12"



Twister Red
upright, 8-12"





Twister Rose
upright, 8-12"



Watercolor
upright, 8-12"

Verbena Lascar™

| 51 | Pinched |
|---|---------|
| Early flowering, reliable, and uniform series | |
| Ideal for 1 gallon container production | |
|   | |



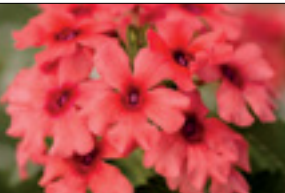
Black Velvet
mounding, 12-14"



Dark Red
mounding, 6-8"



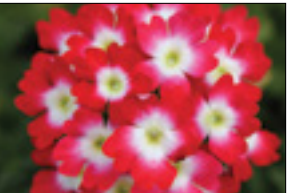
Dark Violet
mounding, 12-14"



Mango Orange
mounding, 12-14"



Pink
mounding, 6-8"



Red Rose
mounding, 12-14"





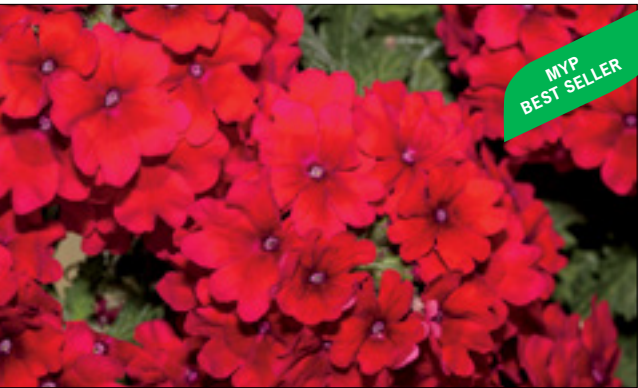
Salmon
mounding, 12-14"



White
mounding, 12-14"

Verbena Pops

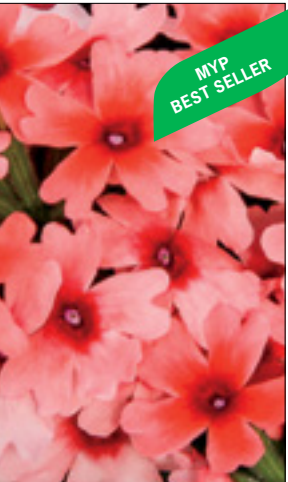
| 51 | Pinched |
|---|---------|
| Compact verbenas that's very suitable for quart production | |
| Looks great in small pots and also does well in garden beds with warmer climates | |
|   | |



Dark Red
mounding, 8-10"



Pink 19
mounding, 8-10"



Salmon + Red Eye
mounding, 8-10"



White 16
mounding, 8-10"



MAST FUSION

INTRODUCING
8 New Assortments
of Combos for Small Growers
Bringing it all together in this explosive
new product line by MYP!



The Original
Mast Fusion

Fancy Feathers Mix



Triple Play Mix

MAST
FUSION

MYP
COMBOS
GROWN
FOR
YOU



Constellation™ Mix NEW
Constellation Petunia Premium
Aries • Gemini • Virgo
mounding/trailing Westhoff



Fancy Feathers Mix
Fancy Feathers Coleus
Black • Pink • Copper
upright Terra Nova



Hot Cakes™ Mix NEW
Hot Cakes Delosperma
Fig Fusion • Banana Blast • Saucy Strawberry
spreading, 1-3" Chris Hansen



Main Street™ Mix NEW
Main Street Coleus
Beale Street • Chartres Street • Wall Street
upright Dummen Orange



Petticoat Star Mix NEW
New Guinea Impatiens
Mandarin Star 19 • Blue Star • Red Star 19
mounding Dummen Orange



Sweet Honey Mix NEW
Sweet Honey Nemesis
Bicolor Wine • Bicolor Lilac • Bicolor Light Pink
compact Collection



Super Hero Mix NEW
Sweetunia Petunia
Fiona Flash • Miss Marvelous • Suzie Storm
upright, 8-12" Dummen Orange



Triple Play Mix NEW
Lyсмachia
Persian Chocolate • Golden Globe • Variegated
semi-trailing Collection



Wild Romance Mix NEW
New Guinea Impatiens
Red • White • Blush Pink
mounding, 14-18" Dummen Orange



MIXED COMBOS

Available in a Mega50 tray

| Combo Plug Recommendations | |
|--|--|
| Through our trialing process, here are some suggested guidelines for Trixi's, Kwik Kombos, and Confetti Garden liners: | |
| 12" HB | 3 plugs per pot takes 8 weeks at 68°F average |
| 12" HB | 4 plugs per pot takes 7 weeks at 68°F average |
| 10" HB | 1 plug per pot takes 9 weeks at 68°F average |
| 10" HB | 2 plugs per pot (close together in the center) takes 8 weeks at 68°F average |
| 10" HB | 3 plugs per pot takes 7 weeks at 68°F average |



Pixie Stix Mix Westhoff



Combo Impatiens SunPatiens® Best of Friends Mix Sakata



Combo Impatiens SunPatiens® Desert Sunset Mix Sakata

CONFETTI GARDEN™ COMBOS

Mixed liners from Dummen Orange
Available in a Mega50 tray



Bel Air Red



Calypso



Campfire



Cherries on Top



Denim Blues



Evening Safari

CONFETTI GARDEN™ COMBOS

Mixed liners from Dummen Orange

Available in a Mega50 tray

Calibrachoa Aloha Kona Hot Orange
Petunia Sweetunia® Fiona Flash
Verbena Empress Flair White



NEW

FireFlash

Coleus Great Falls Angel
Coleus Great Falls Iguazu
Coleus Great Falls Yosemite



NEW

Great Falls

Calibrachoa Aloha Kona Pineapple
Calibrachoa Hula Hot Pink
Calibrachoa Hula Orange



Hawaiian Hula Lili

Calibrachoa Aloha Kona Hot Pink
Calibrachoa Aloha Kona Midnight Blue
Calibrachoa Aloha Kona Soft Pink



Hawaiian Kona Flamingo

Calibrachoa Aloha Purple
Calibrachoa Aloha Red
Calibrachoa Aloha Tiki Orange



Hawaiian Luau

Calibrachoa Aloha Nani Dark Red
Calibrachoa Aloha Nani Midnight Blue
Calibrachoa Aloha Nani White



Hawaiian Nani Country

CONFETTI GARDEN™ COMBOS

Mixed liners from Dummen Orange

Available in a Mega50 tray

Calibrachoa Aloha Nani Dark Red
Calibrachoa Aloha Nani Golden Girl
Calibrachoa Aloha Nani Midnight Blue



Hawaiian Nani Hilo

Calibrachoa Aloha Kona Cherry Red
Calibrachoa Aloha Kona Hot Orange
Calibrachoa Aloha Kona Pineapple



Hawaiian Summer

Calibrachoa Hula Gold
Petunia Sweetunia® Miss Marvelous
Verbena Empress Flair Lavender Blue



NEW

Marvelous Treasure

Calibrachoa Volcano Pink
Petunia Potunia® Plus Purple
Verbena Empress Flair White



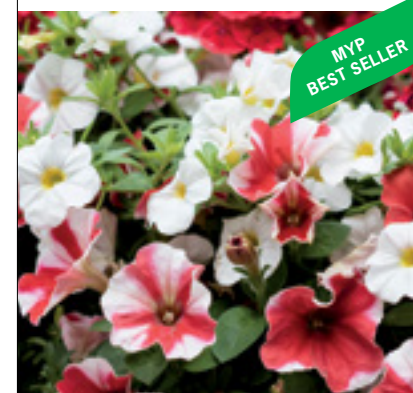
Mountains Majesty

Bidens Bidy Gonzales
Calibrachoa Aloha Purple Sky
Petunia Potunia® Plus Purple



Nightlights

Calibrachoa Aloha Kona White
Petunia Peppy Red
Verbena Empress Flair Red



MYP
BEST SELLER

Peppermint Candy

Bacopa Bahia White Night
Petunia Sweetunia® Strawberry Morning
Verbena Empress Flair Red



Pismo Beach

CONFETTI GARDEN™ COMBOS

Mixed liners from Dummen Orange

Available in a Mega50 tray

Calibrachoa Aloha Kona Yellow
Petunia Potunia® Starfish
Verbena Empress Flair Red



NEW

Playdate

Calibrachoa Aloha Royal White
Petunia Potunia® Purple Halo
Verbena Empress Flair Blue Charme



Purple Halo

Calibrachoa Aloha Kona Tiki Soft Pink
Petunia Potunia® Dark Red
Verbena Empress Flair Red



Rockin' Red

Lobelia Techno® Upright Purple
Petunia Sanguna® Light Blue
Verbena Lanai® Twister Purple



NEW

Blue Ridge™ Mix

Scaevola Bombay® Dark Blue Imp
Scaevola Bombay® Pink Imp
Scaevola Bombay® White Imp



Bombay® Summer Sparkler™ Improved Mix

Calibrachoa Aloha Kona Midnight Blue
Petunia Surprise Blue Sky
Verbena Wicked Cool Blue



MYP
BEST SELLER

Shocking Blue

Calibrachoa Aloha Kona Tiki Soft Pink
Petunia Sweetunia® Hot Pink
Verbena Wicked Hot Pink



Shocking Pink

Calibrachoa Aloha Kona Dark Lavender
Petunia Sweetunia® Purple Vein
Verbena Wicked Purple



Shocking Purple

Calibrachoa Callie® White Imp
Lobelia Techno® Heat Upright Light Blue Imp
Petunia Sanguna® Patio Pink Morn



NEW

Caio Bella Mix

Calibrachoa Callie® Peach
Calibrachoa Callie® Scarlet Red
Calibrachoa Callie® Yellow Imp



Callie® Citrus Fire™ Improved Mix

Calibrachoa Aloha Kona Cherry Red
Petunia Peppy Sunset
Verbena Wicked Pink Pepper



MYP
BEST SELLER

Shocking Sunset

Calibrachoa Hula Blue
Coleus Great Falls Niagara
Petunia Sweetunia Lavender Shimmer



Still Water Safari

Coleus Main Street Broad Street
Coleus Main Street River Walk
Coleus Main Street Wall Street



Trafalgar Square

Calibrachoa Callie® Dark Blue
Calibrachoa Callie® Dark Red
Calibrachoa Callie® Yellow Imp



MYP
BEST SELLER

Callie® Color Wheel™ Improved Mix

Calibrachoa Callie® Coral Pink
Calibrachoa Callie® Purple Imp
Calibrachoa Callie® White Rose Vein



Callie® Pink Bliss™ Improved Mix

KWIK KOMBOS™

Mixed liners from Syngenta
Available in a Mega50 tray

Bidens Mexican Gold™
Lobelia Techno® Heat Electric Blue
Petunia Dekko™ Red



Fire and Ice™ Mix

Lobelia Techno® Heat Upright Purple
Petunia Sanguna® Lipstick Imp
Verbena Lanai® Magenta



Love Bird™ Mix

NEW

Petunia Dekko™ Dark Lavender
Verbena Lanai® Compact Lime Green
Verbena Lanai® Peach



Mai Tai™ Mix

NEW

Lobelia Techno® Heat Dark Blue
Petunia Sanguna® Purple
Verbena Lanai® Bright Eye



Night in Pompeii™ Improved Mix

MYP
BEST SELLER

Angelonia Carita Cascade Raspberry
Lantana Bandana Rose
Scaevola Bombay Pink



Pink Flamingo™ Mix

NEW

Calibrachoa Callie® Yellow Imp
Lobelia Techno® Heat Upright Light Blue Imp
Petunia Dekko™ Star Rose



Pink Lemonade™ Improved Mix

MYP
BEST SELLER

KWIK KOMBOS™

Mixed liners from Syngenta
Available in a Mega50 tray

Petunia Dekko™ Star Rose
Petunia Sanguna® Yellow
Verbena Lanai® Compact Lime Green



Pink Limeaide™ Mix

NEW

Calibrachoa Callie® White Imp
Petunia Sanguna® Lipstick Imp
Verbena Lanai® Twister Pink



Pink Prism Mix

NEW

Lobelia Techno® Heat Violet
Petunia Dekko™ Lavender Eye
Verbena Lanai® Deep Purple



Plum-Tastic™ Mix

MYP
BEST SELLER

Lobelia Techno® Heat Upright Light Blue Imp
Petunia Dekko™ Salmon
Verbena Lanai Compact Lime Green



Powder Puff™ Mix

NEW

Calibrachoa Callie® Yellow Imp
Lobelia Techno® Heat Dark Blue
Verbena Lanai® Scarlet with Eye



Primary Perfection™ Improved Mix

Lobelia Techno® Heat Upright Purple
Petunia Sanguna® Patio Purple
Verbena Lanai® Bright Eyes



Rosewater™ Mix

NEW

KWIK KOMBOS™

Mixed liners from Syngenta
Available in a Mega50 tray

Bidens Mexican Gold™
Petunia Sanguna® Burgundy
Scaevola Bombay® White Imp



Royal Gold™ Improved Mix

Petunia Sanguna® Blue Imp
Petunia Sanguna® Lipstick Imp
Petunia Sanguna® White Imp



Sanguna® Punk Rock™ Improved Mix

Petunia Sanguna® Blue Imp
Petunia Sanguna® Red Imp
Petunia Sanguna® White Imp



Sanguna® Salute™ Improved Mix

Lobelia Techno® Heat Upright Light Blue Imp
Petunia Dekko™ Red
Verbena Lanai® Compact Lime Green



Sea Monkey™ Mix

Calibrachoa Callie® Apricot
Petunia Dekko™ Red
Verbena Lanai® Peach



Sedona™ Mix

Calibrachoa Callie® Orange
Petunia Dekko™ Red
Verbena Lanai® Blue Denim



Southwestern Summer™ Mix

KWIK KOMBOS™

Mixed liners from Syngenta
Available in a Mega50 tray

Lantana Bandana Pink
Lantana Bandana Rose
Lantana Bandana White



Strawberry Daquiri™ Mix

Bidens Mexican Gold
Calibrachoa Callie® Pink Morn
Petunia Sanguna® Lipstick Imp.



Surfer Chick™ Mix

Calibrachoa Callie® Pink Morn
Calibrachoa Yellow Imp.
Petunia Sanguna® Sweet Pink



Sweet Sixteen™ Mix

Lantana Bandana Orange
Lantana Bandana Peach
Lantana Bandana Yellow



Tequila Sunrise™ Mix

Calibrachoa Callie® Apricot
Calibrachoa Callie® Burgundy
Calibrachoa Callie® Yellow Imp.



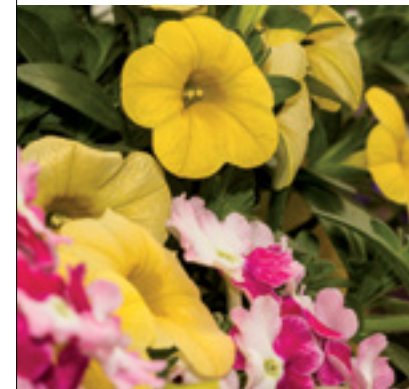
Tutti Frutti™ Improved Mix

Lobelia Techno® Heat Upright Dark Blue
Petunia Sanguna® Hot Rose
Verbena Lanai® Compact Lime Green



Water Lily™ Mix

Calibrachoa Callie® Yellow Imp.
Lobelia Techno® Heat Dark Blue
Verbena Lanai® Twister™ Red Imp.



Welcome Back Spring™ Mix

TRIXI® COMBOS

Mixed liners from Selecta
Available in a Mega50 tray

Petunia Headliner™ Blue
Petunia Headliner™ Red
Petunia Headliner™ White



Ball Game

Calibrachoa MiniFamous® Neo Coral+Red Eye
Calibrachoa MiniFamous® Neo Orange Red Eye
Calibrachoa MiniFamous® Neo Yellow+Red Vein



Batting Eyes

Calibrachoa MiniFamous™ Neo Purple
Calibrachoa MiniFamous™ Neo Violet+Eye
Calibrachoa MiniFamous™ Salmon Pink+Eye



Berry Daring 17

Bacopa Big Falls Pearl
Calibrachoa MiniFamous™ Neo Light Blue
Verbena Blues Light Pink+Eye



Blueberry Parfait 19

NEW

Calibrachoa MiniFamous™ Compact Dark Blue
Calibrachoa MiniFamous™ Neo Deep Yellow
Calibrachoa MiniFamous™ Neo Vampire



Bolero 18

Calibrachoa MiniFamous™ Compact Blue
Calibrachoa MiniFamous™ Neo Orange+Red Eye 17
Calibrachoa MiniFamous™ Neo Vampire



Caribbean Cocktail 18

MYP
BEST SELLER

TRIXI® COMBOS

Mixed liners from Selecta
Available in a Mega50 tray

Calibrachoa MiniFamous™ Light Pink+Eye
Petunia Headliner™ Electric Purple
Verbena Blues Rose Eye



Cherry Kiss 19

Calibrachoa MiniFamous® Neo Orange+Red Eye
Osteospermum Daisy Falls™ Purple
Verbena Lascar™ Mango Orange



Daisy Dance

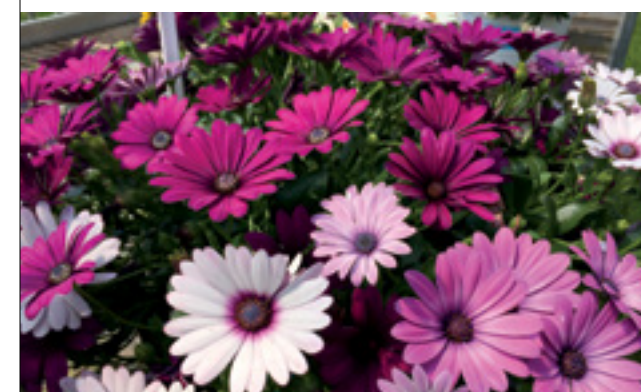
NEW

Bidens Namid™ Early Yellow
Calibrachoa MiniFamous™ Compact Dark Blue
Verbena Lascar™ Burgundy



Crazy for Crayons

Osteospermum Daisy Falls™ Pink
Osteospermum Daisy Falls™ Purple
Osteospermum Daisy Falls™ White



Daisy Falls

Calibrachoa MiniFamous™ Double Amethyst
Calibrachoa MiniFamous™ Double Lemon 16
Calibrachoa MiniFamous™ Double Magenta



Double Date

MYP
BEST SELLER

Bacopa Big Falls Blue
Diascia Piccadilly Dark Salmon 19
Osteospermum Daisy Falls Purple



Flamingo Feather

NEW

TRIXI® COMBOS

Mixed liners from Selecta
Available in a Mega50 tray

Calibrachoa MiniFamous™ Light Pink + Eye
Petunia Headliner™ Red
Verbena Lascar™ Red Rose



Geisha Girl

Calibrachoa MiniFamous™ Neo Deep Yellow
Calibrachoa MiniFamous™ Neo Purple
Calibrachoa MiniFamous™ Neo Violet+Eye



Gold & Bold 17

Petunia Headliner™ Lipstick
Petunia Headliner™ Pink Vein
Petunia Headliner™ White



Hotter Than You Pink

Bidens Namid Early Yellow
Calibrachoa MiniFamous® Neo Light Blue
Petunia Starlet™ Burgundy



Jam Session 19

Bidens Namid™ Early Yellow
Calibrachoa MiniFamous™ Compact Dark Blue
Petunia Headliner™ Red



La Bomba

Calibrachoa MiniFamous™ Compact Dark Blue
Petunia Headliner™ Red
Verbena Lascar™ White



Liberty Bell

TRIXI® COMBOS

Mixed liners from Selecta
Available in a Mega50 tray

Calibrachoa MiniFamous™ Compact Blue
Calibrachoa MiniFamous™ Neo Deep Yellow
Calibrachoa MiniFamous™ Neo Pink



Lollipop

Calibrachoa MiniFamous™ Neo Blue
Petunia Starlet™ Lavender Star 19
Verbena Blues Lavender+Eye



Nightfall 19

Calibrachoa MiniFamous™ Standard Double Deep Yellow
Petunia Headliner Lipstick
Scaevola Fairy Blue



Love Song

Bidens Namid™ Special Yellow
Petunia Starlet™ Velvet
Verbena Blues Red



Night Watch

Calibrachoa MiniFamous™ Standard Double DeepYellow
Calibrachoa MiniFamous™ Uno Violet Star
Osteospermum Daisy Falls™ Purple



Popular Demand

TRIXI® COMBOS

Mixed liners from Selecta
Available in a Mega50 tray

Bidens Namid™ Special Yellow
Verbena Lascar™ Dark Red
Verbena Lascar™ Dark Violet



Prime Time

Calibrachoa MiniFamous™ Compact Dark Blue
Calibrachoa MiniFamous™ Neo Light Blue
Calibrachoa MiniFamous™ Neo White



Purple with a Purpose 19

Verbena Lascar™ Burgundy
Verbena Lascar™ Dark Violet
Verbena Lascar™ Magenta



Royal Castle

Calibrachoa MiniFamous™ Neo Salmon Pink+Eye
Petunia Starlet™ Pink Lemonade
Verbena Blues Lavender+Eye



Salt Water Taffy

Verbena Blues Lavender+Eye
Verbena Blues Purple+Eye
Verbena Blues White



Soul

Calibrachoa MiniFamous™ Compact Blue
Calibrachoa MiniFamous™ Orange
Lobelia Magadi™ Basket White



Spring Valley

TRIXI® COMBOS

Mixed liners from Selecta
Available in a Mega50 tray

Calibrachoa MiniFamous™ Compact Blue
Petunia Starlet™ Lavender Star
Verbena BeBop™ Lavender



Starlight Starbright

Bacopa Big Falls™ White
Calibrachoa MiniFamous™ Light Pink+Eye
Verbena Lascar™ Burgundy



Strawberry Shortcake

Calibrachoa MiniFamous® Neo Vampire
Calibrachoa MiniFamous® Uno Orange
Calibrachoa MiniFamous® Uno Yellow



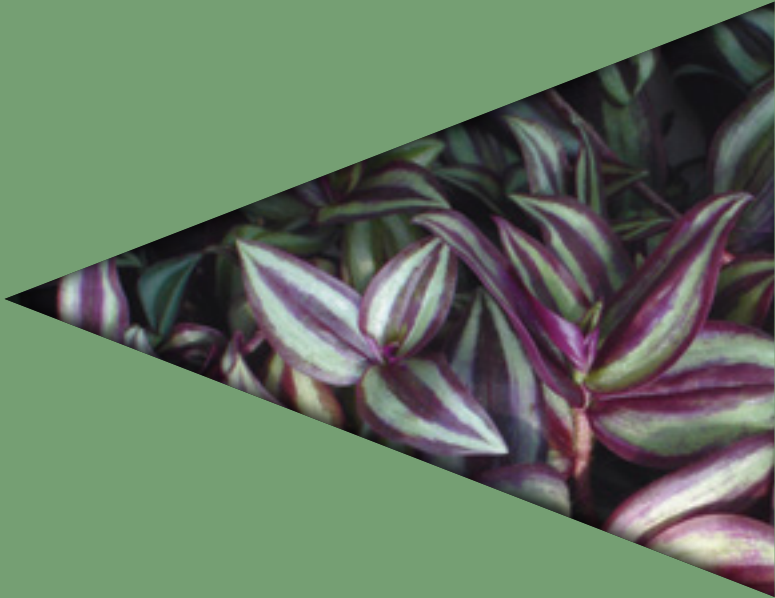
Sunset 19

Calibrachoa MiniFamous® Neo Yellow+Red Vein
Petunia Headliner™ Red
Verbena Lascar™ Mango Orange



Who Knew Orleans

NEW



Foliage

| |
|---|
| Mega50 |
| An array of color and texture for single pot production |
| Great as accents in combo pots |
| Available beginning week 1 |

Collection



Boston Fern (Mega50 & 1801)
upright, 18-24"



Chlorophytum comosum Spider Plant
upright, 12-18"

Foliage

| |
|---|
| Mega50 |
| An array of color and texture for single pot production |
| Great as accents in combo pots |
| Available beginning week 1 |

Collection



Dracaena marginata Bicolor
upright, 14-20"



Dracaena marginata Magenta
upright, 18-24"



Dracaena marginata Red Edge
upright, 18-24"

Tradescantia

| |
|--|
| 51 |
| Trailing plant with unique variegated foliage |
| Ideal for hanging baskets and combination planters |
| Collection |

Collection



Purple-Silver
semi-trailing, 8-12"

Cymbopogon citratus

| |
|---|
| 51 |
| Lemon Grass resembles an ornamental grass but the base of its leaves can be used as a culinary herb while the tops of the leaves are used in teas |
| Multi seeds per cell |

Collection



Lemon Grass
upright, 12–18"

Grasses Cyperus

| |
|---|
| Mega50 |
| Long lasting plants which can be grown in ponds |
| Heat tolerant |
| Ideal for combinations and in landscapes |

Collection



Baby Moses
upright, 18–24"



Crown of Pharaoh
upright, 24–36"

Grasses Ornamental

| |
|--|
| 51 |
| Long lasting plants with different density and growth habits |
| Heat tolerant |
| Ideal for combinations and in landscapes |
| Multi seeds per cell |

Collection



Carex Red Rooster
upright, 18–24"



Isolepis Fiber Optic Grass
upright, 12–18"

Juncus effusus

| |
|---|
| 51 |
| Hardy perennial to USDA zone 4 |
| Very nice variety for use in mixed containers |
| Strong, twisted, upright stems |
| Multi seeds per cell |

Collection



Spiralis
upright, 18–24"

Juncus

| |
|--|
| 51 |
| Long lasting plants with different density and growth habits |
| Heat tolerant |
| Ideal for combinations and in landscapes |
| Hardy in zones 5 - 9 |
| Multi seeds per cell |

Collection



Blue Arrows
upright, 18–24"

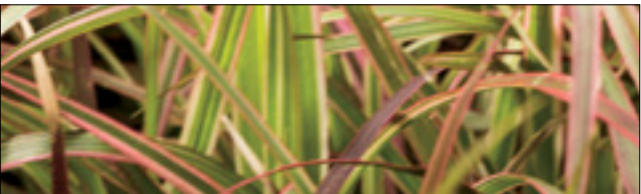
Grasses Ornamental

| |
|--|
| Mega50 |
| Fountain grasses with arching leaves |
| Rose colored flower spikes |
| Ideal for combinations and in landscapes |

Collection



Available beginning week 1



Pennisetum advena Fireworks
upright, 24–36"



Pennisetum setaceum Rubrum
upright, 24–36"



Pennisetum Skyrocket
upright, 24–36"



Basil Herbalea

| |
|--|
| 51 |
| Basil Herbalea varieties have stand out vigor, aroma, weather resistance, yield, and disease tolerance |
| Very compact bushy plant with small red & green leaves |

Collection



Red Ball
upright, 12-16"

Cymbopogon citratus

| |
|---|
| 51 |
| Lemon Grass resembles an ornamental grass but the base of its leaves can be used as a culinary herb while the tops of the leaves are used in teas |
| Multi seeds per cell |

Collection



Lemon Grass
upright, 12-18"

Herbs

| |
|---|
| 51 |
| A complete assortment of fragrant, culinary, and ornamental herbs |
| Ideal for flower beds, mixed containers, and herb gardens |

Collection



Oregano Italian
upright, 18-24" Pinched



Rosemary Upright
upright, 18-24"



Sage Tricolor
upright, 12-18" Pinched



Thyme Golden Lemon
semi-trailing, 8-12" Pinched
2 cuttings per cell



Lavender

| | |
|---|---------|
| 51 | Pinched |
| English Lavender with deep, violet-blue flowers, and uniform mounds of silvery-gray, aromatic foliage | |
| Ideal in gardens and raised beds and is a butterfly delight | |
| Hardy in zones 5 - 9 | |

Syngenta



Lavender Aromatico™ Blue Imp
upright, 14-20"

GREENFUSE
PERENNIALS



GREENFUSE
PERENNIAL
QUICK LOOK

| Perennial | Series/Variety | Height | Hardiness Zone |
|--------------|-----------------------------------|----------|----------------|
| Agastache | Sunrise™ Red | 18 - 24" | 5 |
| | Sunrise™ Blue | 18 - 24" | 5 |
| | Sunrise™ Mandarin Orange | 18 - 24" | 5 |
| | Sunrise™ Orange | 18 - 24" | 5 |
| | Sunrise™ Violet | 18 - 24" | 5 |
| | Sunrise™ White | 18 - 24" | 5 |
| | Sunrise™ Yellow | 18 - 24" | 5 |
| Buddleia | Leah™ Blue | 24 - 30" | 5 |
| | Leah™ Violet | 24 - 30" | 5 |
| | Leah™ White | 24 - 30" | 5 |
| | Delmara™ Orange | 1 - 3" | 5 |
| Delosperma | Delmara™ Pink | 1 - 3" | 5 |
| | Delmara™ Red | 1 - 3" | 5 |
| | Delmara™ Yellow | 1 - 3" | 5 |
| | Constant Beauty™ Crimson Picotee | 6 - 10" | 4 |
| Dianthus | Constant Beauty™ Garnet | 6 - 10" | 4 |
| | Constant Beauty™ Pink/Red | 6 - 10" | 4 |
| | Constant Beauty™ Pink | 6 - 10" | 4 |
| | Constant Beauty™ Red | 6 - 10" | 4 |
| | Constant Cadence® Cherry Red | 6 - 8" | 4 |
| | Constant Cadence® Milk Cherry | 6 - 8" | 4 |
| | Constant Cadence® Peach | 6 - 8" | 4 |
| | Constant Cadence® Peppermint | 6 - 8" | 4 |
| | Constant Cadence® Raspberry | 6 - 8" | 4 |
| | Constant Cadence® Red | 6 - 8" | 4 |
| | Constant Promise™ Crimson Picotee | 6 - 8" | 4 |
| | Constant Promise™ Garnet | 6 - 8" | 4 |
| | Constant Promise™ Pink/Red | 6 - 8" | 4 |
| | Constant Promise™ Pink | 6 - 8" | 4 |
| Gailardia | Lunar® Red Moon | 6 - 10" | 5 |
| | Lunar® Honey Moon | 6 - 10" | 5 |
| Gaura | Bantam™ Pink | 10 - 14" | 5 |
| | Bantam™ Red | 10 - 14" | 5 |
| | Bantam™ White | 10 - 14" | 5 |
| Leucanthemum | White Mountain | 12 - 18" | 4 |
| | Angel Daisy® | 12 - 18" | 4 |
| | Darling Daisy® | 12 - 18" | 7 |
| | Lancaster Double Angel Daisy® | 12 - 18" | 4 |
| Monarda | Marje® Pink | 15 - 18" | 4 |
| | Marje® Purple | 15 - 18" | 4 |
| | Marje® Rose | 15 - 18" | 4 |
| Salvia | Swiftly® Rose | 8 - 12" | 4 |
| | Swiftly® Violet | 8 - 12" | 4 |
| | Swiftly® White | 8 - 12" | 4 |
| Scabiosa | Giga® Blue | 16 - 20" | 4 |
| | Giga® Silver | 16 - 20" | 4 |
| Veronica | Vernique® Blue | 10 - 14" | 4 |
| | Vernique® Dark Blue | 10 - 16" | 4 |
| | Vernique® Pink | 10 - 14" | 4 |
| | Vernique® Rose Improved | 10 - 16" | 4 |
| | Vernique® Shining Star | 10 - 14" | 4 |
| | Vernique® White | 10 - 14" | 4 |



Agastache Sunrise™
upright/pinched



Buddleia Leah™
upright/pinched



Delosperma Delmara™
spreading/not pinched



Dianthus
Constant Beauty™
Constant Cadence™
Constant Promise™
mounding/pinched



Gailardia Lunar®
upright/pinched



Gaura Bantam™
upright/pinched



Leucanthemum
upright/not pinched



Monarda Marje®
upright/pinched



Salvia Swiftly®
mounded/pinched



Scabiosa Giga®
mounded/not pinched



Veronica Vernique®
upright/pinched



PERENNIALS

PERENNIAL
QUICK LOOK

| Perennial | Series/Variety | Hardiness Zone | First Year Flowering |
|--------------------|--------------------------|----------------|----------------------|
| Ajuga | Burgundy Glow | 3-9 | X |
| Coreopsis | Solanna™ Golden Sphere | 5-9 | X |
| | Uptick Gold & Bronze | 5-9 | X |
| | Uptick Yellow & Red | 5a-9b | X |
| | Grandiflora | 4-5 | X |
| Dianthus | Oscar® series | 6a-10b | X |
| | Kahori® | 5-10 | X |
| | Rockin Red | 5a-8b | X |
| | SuperTrouper™ series | 4-8 | X |
| | Cheyenne Spirit | 6-9 | X |
| | PowWow Wild Berry | 4-9 | X |
| Gaura | Belleza™ series | 6-9 | X |
| Hedera canariensis | Marengo | 7-10 | N/A |
| Hedera helix | English Ivy | 4-9 | N/A |
| | Glacier | 4-9 | N/A |
| | Golden Child | 4-9 | N/A |
| | Needle Point | 4-9 | N/A |
| Heuchera | Amber Waves | 4-9 | N/A |
| | Cherry Cola | 4-9 | X |
| | Cinnabar Silver | 4-9 | N/A |
| | Crimson Curls | 4-9 | X |
| | Little Cutie Blondie | 4-9 | N/A |
| | Stormy Seas | 4-9 | N/A |
| | Lami™ Dark Purple | 5-9 | X |
| | Pewter Pink | 3-8 | X |
| | White Nancy | 3-8 | X |
| Lavender | Aromatico™ Blue Improved | 5-9 | X |
| Leucanthemum | Sweet Daisy Birdie | 4 | X |
| | Sweet Daisy Christine | 4 | X |
| | Sweet Daisy Jane | 4 | X |
| Lysimachia | Nummularia Goldilocks | 5-9 | N/A |
| Nepeta | Walker's Low | 3-8 | X |
| Penstemon | Pristine Blue | 5 | X |
| | Pristine Scarlet | 5 | X |
| Sagina Subulata | Irish Moss | 5-9 | X |
| Salvia | Salute Deep Blue | 4-9 | X |
| | Spring King | 4-9 | X |
| Sedum | Lemon Ball | 3-11 | N/A |
| Veronica | Vernique Dark Blue | 4-8 | X |
| | Vernique Pink Improved | 4-8 | X |
| Vinca major | High Color | 7-11 | N/A |
| | Maculata | 7-11 | N/A |
| | Variegata | 7-11 | N/A |
| | Wojo's Gem | 7-11 | N/A |
| Vinca minor | Illumination | 4-9 | N/A |

Ajuga

| |
|--|
| 51 |
| A lovely tri-colored groundcover of creamy-white, sage-green, and burgundy foliage |
| Needs well-drained soil to perform its best |
| Blooms mid to late spring |
| Perfect to grow underneath shade trees, but also does well for edgings, mixed containers, and rock gardens |
| Hardy to zones 3 - 9 |



Collection



Burgundy Glow
trailing groundcover, 6"

Coreopsis Grandiflora

| |
|--|
| 51 |
| First year flowering coreopsis with fantastic garden performance |
| Compact habit maintained through maturity |
| Fully double, golden-orange flower |
| Mildew tolerant |



Available weeks 45 - 10

Dummen Orange



Moonswirl
mounding, 8-10"

Coreopsis Solanna™

| |
|---|
| 51 |
| Profuse continuous flowering |
| Brilliant yellow color |
| Compact and mounded habit |
| Ideal for garden, patios and mixed containers |
| Hardy in zones 4 - 9 |



Danziger



Golden Sphere
mounding, 14-18"

Coreopsis Uptick

| | |
|---|---------|
| 51 | Pinched |
| Tidy mounded habit is easy to ship and shows well at retail | |
| Plant maintains its shape all summer long | |
| Mildew resistant | |
| Hardy in zones 5 - 9b | |



Collection



Gold & Bronze
upright, 12-14"



Yellow & Red
upright, 12-14"

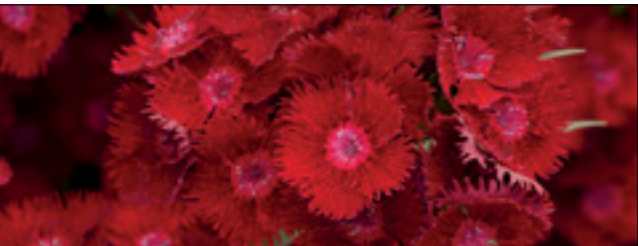
Dianthus

| |
|---|
| 51 |
| Vivid red-colored dianthus with summer long performance in the garden |
| Lacy, slightly scented flowers sit atop full and long lasting plants |
| Hardy in zones 5a - 8b |
| Multi seeds per cell |



Available beginning week 1

Kieft



Rockin' Red
upright, 12-24"

Dianthus Kahori®

| | |
|---------------------------|---------|
| 51 | Pinched |
| Flowers all summer long | |
| Unique semi-double flower | |
| Strongly scented | |
| Hardy in zones 4 - 8 | |



Available weeks 45 - 10

Dummen Orange



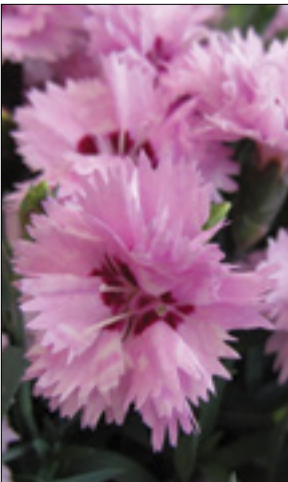
Kahori
semi-upright, 4"

Dianthus Oscar®

| | |
|---|---------|
| 51 | Pinched |
| This hyper-uniform pot carnation series boasts the best-branched habit on the market | |
| Compact, double bloomed Oscar puts on a strong, long-lasting show in small pots and in the garden | |
| Hardy in zones 6a - 10b | |
| Available weeks 45 - 10 | Selecta |



Dark Red
upright, 8-10"



Pink Kisses
upright, 8-10"



Pink + Purple
upright, 8-10"



Salmon + White
upright, 8-10"

Dianthus SuperTrouper™

| | |
|---|---------|
| 51 | Pinched |
| SuperTroupers possess strong stems and excellent root sytems | |
| An excellent pot and garden plant, there is a wide range of colors to choose from | |
| Fragrant | |
| Hardy in zones 6 - 9 | |
| Available weeks 45 - 10 | Selecta |



Butterfly Dark Red
upright, 8-10"



Lilac on Purple
upright, 10-14"



Magenta + White
upright, 10-14"



Orange
upright, 10-14"



Pink + White
upright, 10-14"



Purple
upright, 10-14"



Red + White
upright, 10-14"



Silver Pink
upright, 10-14"



Velvet + White
upright, 10-14"

Echinacea

| |
|---|
| 51 |
| First year flowering |
| Self-cleaning, no deadheading necessary |
| Drought and weather resistant |
| Full sun |
| Hardy in zones 4 - 9 |
| Available beginning week 1 |
| Collection |



Cheyenne Spirit
upright, 18-24"

Echinacea PowWow

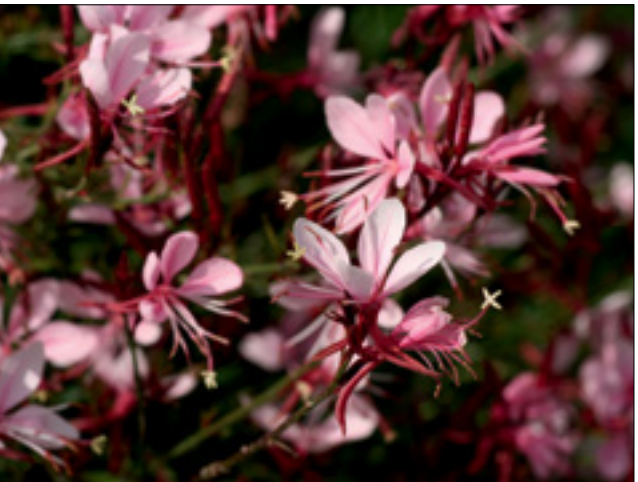
| |
|---|
| 51 |
| Winner of the 2010 AAS Flower award |
| First year flowering and no deadheading required for rebloom! |
| Its well-branched habit lends to many dark rose flowers from early summer to mid fall |
| Compact habit |
| Does well in containers and landscapes |
| Attracts butterflies and bees |
| Grow in full sun |
| Hardy in zones 3 - 9 |
| Available beginning week 1 |
| Collection |



Wild Berry
upright, 20-24"

Gaura Belleza™

| | |
|---|---------|
| 51 | Pinched |
| Heat loving plant that blooms from summer to fall | |
| Upright habit on compact plants | |
| Ideal for beds and large containers | |
| Hardy in zones 6 - 9 | |
| | Selecta |



Compact Light Pink
upright, 10-16"



Dark Pink
upright, 14-20"



White 17
upright, 14-20"

Hedera Ivy

| |
|---|
| 51 |
| Accent plant with various forms of leaf shapes and natural colors |
| Full sun to partial shade |
| Ideal for mixed containers, hanging baskets, and in the landscape |
| Hardy in zones 4 - 9 |
| 2 cuttings per cell |



Collection



Hedera canariensis Marengo **Mega 50** **Zones 7-10**
trailing, 12–14"



Hedera helix English Ivy
trailing, 3–10"



Hedera helix Glacier
trailing, 3–6"



MYP
BEST SELLER

Hedera helix Golden Child
trailing, 3–6"



Hedera helix Needle Point
trailing, 3–6"

Heuchera

| |
|---|
| 51 |
| Wonderfully ruffled leaves are brightest in the spring |
| Its compact habit makes it perfect for a front border plant |
| Its natural color tone blends well with any color! |
| Hardy in zones 4 - 9 |



Terra Nova



Amber Waves
upright, 8–17"

Heuchera

| |
|--|
| 51 |
| Front of the border charm with lovely red brown leaves and rust-cherry red flowers |
| 'Cherry Cola' performs all year round |
| Something fizzy for the garden |
| Very long lived |



Terra Nova



NEW

Cherry Cola
upright, 6–18"

Heuchera

| |
|--|
| 51 |
| Cinnabar Silver combines a profusion of cinnabar red flowers atop compact mounds of showy metallic foliage |
| Hardy in zones 4 - 9 |



Terra Nova



Cinnabar Silver
upright, 8–17"

Heuchera

| |
|--|
| 51 |
| Vigorous, clump-forming coral bell |
| Burgundy red to dark purple-brown leaves and densely curled leaf edges |
| Crinkled edges turn up and reveal bright red |



Dummen Orange



NEW

Crimson Curls
upright, 12–18"

Heuchera

| |
|---|
| 51 |
| Carmel colored foliage with ever present flower spikes of creamy yellow |
| Just 5" tall and 8" wide |
| Hardy in zones 4 - 9 |



Terra Nova



Little Cutie Blondie
upright, 5–12"

Heuchera

| |
|---|
| 51 |
| Ruffled foliage with an applique of silver, lavender, pewter, and charcoal grey make this a great large specimen plant in perennial gardens |
| Hardy in zones 4 - 9 |



Terra Nova



Stormy Seas
upright, 8–17"

Lamium

| | |
|--|---------|
| 51 | Pinched |
| Grown mainly for the foliage color | |
| Spreading habit with colorful foliage | |
| Ideal for mixed containers, hanging baskets, and as a ground cover | |
| Hardy in zones 3 - 8 | |



Collection




Pink Pewter
semi-trailing, 8–12"



White Nancy
semi-trailing, 8–12"

Lamium Lamī™

| | |
|--|---------|
| 51 | Pinched |
| Early flowering | |
| Grown mainly for the foliage color | |
| Ideal for mixed containers, hanging baskets, and as a ground cover | |
| Hardy in zones 3 - 8 | |



Danziger



Dark Purple
mounding, 10–14"

Lavender

| | |
|---|---------|
| 51 | Pinched |
| English Lavender with deep, violet-blue flowers, and uniform mounds of silvery-gray, aromatic foliage | |
| Ideal in gardens and raised beds and is a butterfly delight | |
| Hardy in zones 5 - 9 | |

Syngenta



Aromatico™ Blue Imp
upright, 14–20"

Leucanthemum

| |
|----------------------------------|
| 51 |
| New Series! |
| Sturdy plant habit |
| Reblooming throughout the season |
| Impressive garden performance |
| Hardy in zone 4 |

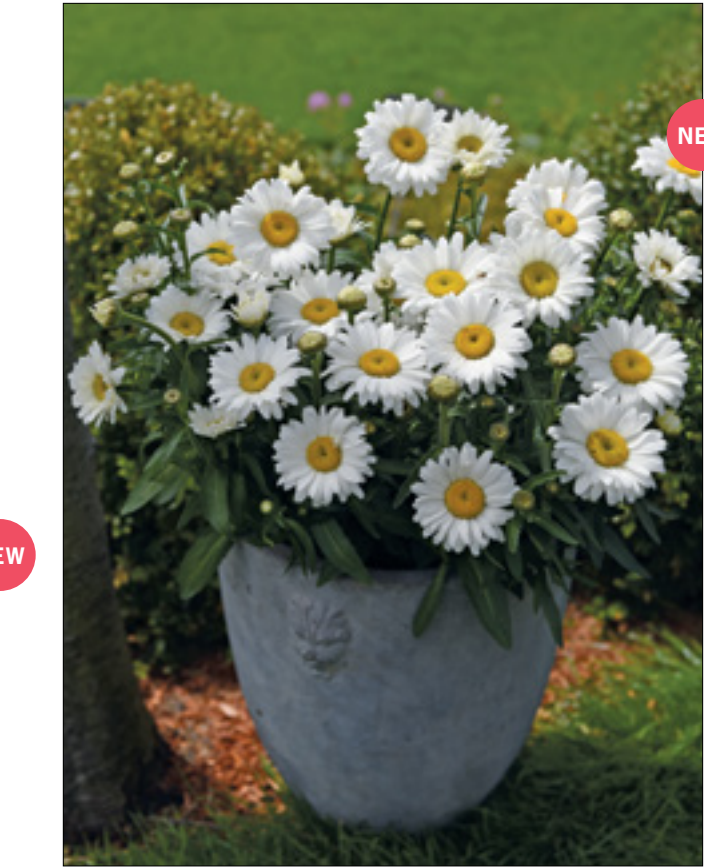
Dummen Orange



Sweet Daisy Birdie
upright, 14–18"



Sweet Daisy Christine
mounding, 6–10"



Sweet Daisy Jane
Semi-hanging, 8–10"

Lysimachia Nummularia

| | |
|--|---------|
| 51 | Pinched |
| Creeping plant that spreads rapidly and is an excellent ground cover | |
| Ideal for ground cover, baskets, and mixed containers | |
| Hardy in zones 5 - 9 | |

Collection



Goldilocks
trailing, 6–12"

Nepeta

| | |
|--|---------|
| 51 | Pinched |
| Abundant periwinkle blue flowers adorn the fragrant mounds of grey-green foliage | |
| Attracts hummingbirds and butterflies | |
| Hardy in zones 3 - 8 | |

Collection



Walker's Low
mounding, 12–14"

Penstemon

| | |
|---|---------|
| 51 | Pinched |
| New Series! | |
| Very good branching with long flowering on compact plants | |
| Hardy in zone 5 | |

Dummen Orange



Pristine Blue
upright, 12–14"



Pristine Scarlet
upright, 12–14"

Sagina Subulata

| | |
|--|--|
| 51 | |
| Irish Moss is a ground cover with shamrock-green foliage that forms a moss-like carpet | |
| Hardy in zones 5 - 9 | |

Collection



Irish Moss
spreading, 6–12"

Salvia nemorosa

| | |
|------------------------------|---------|
| 51 | Pinched |
| First year flowering | |
| Free branching | |
| VERY early flowering | |
| Perfect for quart production | |
| Hardy in zones 4 - 9 | |

Dummen Orange



Salute Deep Blue
upright, 14–16"

Salvia nemorosa

| | |
|-------------------------------|---------|
| 51 | Pinched |
| First year flowering | |
| Earliest blooming nemorosa | |
| Great deep blue color | |
| Perfect for gallon production | |
| Hardy in zones 4 - 9 | |

Dummen Orange



Spring King
upright, 12–14"

Sedum

| | |
|---|--|
| 51 | |
| Vivid chartreuse foliage finely spiked, but with a soft touch | |
| Attractive to butterflies and hummingbirds | |
| Drought tolerant and highly resistant to deer and rabbits | |
| Hardy in zones 3 - 11 | |

Collection



Lemon Ball
mounding, 6–8"

Vinca major and minor

| | |
|--|--|
| 51 | |
| Great for mixed containers and baskets | |
| Ideal for hardy ground cover | |
| Vinca major is hardy in zones 7 - 11 and Vinca minor is hardy in zones 4 - 9 | |

Collection



High Color
trailing, 10–15"

2 cuttings per cell



Maculata
trailing, 8–15"

2 cuttings per cell



Variegata
trailing, 10–15"

2 cuttings per cell



Wojo's Gem
trailing, 8–12"

2 cuttings per cell



Vinca minor Illumination
trailing, 6–10"



2 cuttings per cell

SUCCULENTS



Succulent Combo

| |
|---|
| Mega50 |
| All mixed trays feature 5 different colors of 10 each |
| Coastal Sunset is a Sempervivum mix |
| Coral Reef and Tidal Wave give that under the sea look in a succulent mix |



Only available beginning week 2

Collection

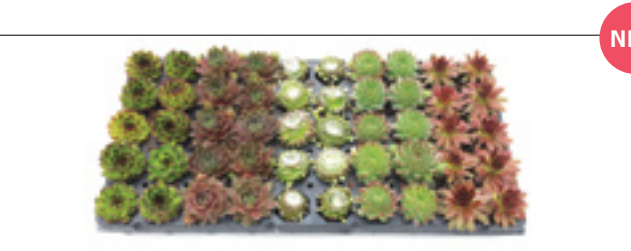
Shown from left to right:
1 Chick Charms® Cranberry Cocktail™ 2 Chick Charms® ‘Gold Nugget’ ppaf
3 Chick Charms® Cosmic Candy™ 4 Chick Charms® Silver Suede™
5 Chick Charms® Berry Bomb™



Chick Charms® Mix

Chris Hansen

Shown from left to right:
1 Chick Charms Appletini 2 Chick Charms Plum Parfait 3 Chick Charms Cotton Candy
4 Chick Charms Mint Marvel 5 Chick Charms Strawberry Kiwi.



Chick Charms® 2.0 Mix

Chris Hansen

Shown from left to right:
1 Sempervivum ‘Killer’ 2 Sempervivum ‘Reinhard’ 3 Sempervivum ‘Rocknoll Rosette’
4 Sempervivum allionii 5 Sempervivum ‘Pacific Blue Ice’



Coastal Sunset Mix



Shown from left to right:
1 Ocularia deltoides 2 Sedum Tokyo Sun 3 Senecio kleiniformis
4 Sedum rubrotinctum ‘Aurora’ 5 Rhipsalis salicornioides



Coral Reef Mix

Succulent Combo

| |
|---|
| Mega50 |
| All mixed trays feature 5 different colors of 10 each |
| Coastal Sunset is a Sempervivum mix |
| Coral Reef and Tidal Wave give that under the sea look in a succulent mix |



Only available beginning week 2

Collection

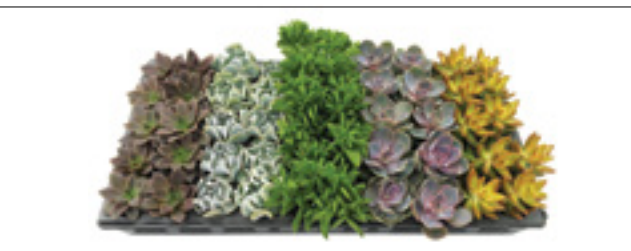
Shown from left to right:
1 Mangave Mission to Mars 2 Mangave Lavender Lady 3 Mangave Moonglow
4 Mangave Pineapple Express 5 Mangave Spotty Dotty



Mad About Mangave® Mix

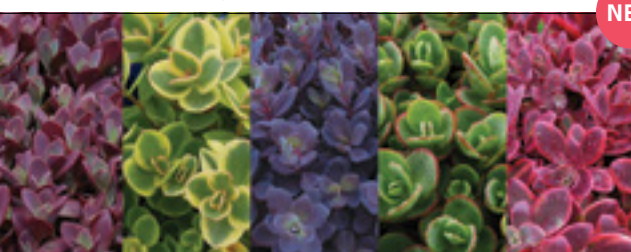
Walters Garden

Shown from left to right:
1 Echeveria Brown Sugar 2 Echeveria Topsy Turvy 3 Peperomia Ferreyrae
4 Echeveria Perle von Nurnberg 5 Sedum Firestorm



Sea Urchin Mix

Shown from left to right: 1 Sedum Sun Sparkler Firecracker
2 Sedum Sun Sparkler Lime Twister 3 Sedum Sun Sparkler Plum Dazzled
4 Sedum Sun Sparkler Lime Zinger 5 Sedum Sun Sparkler Wildfire



Sun Sparkler® Mix

Chris Hansen

Shown from left to right:
1 Crassula Gollum 2 Aeonium Kiwi 3 Senecio serpens
4 Sedum Tokyo Sun 5 Portulacaria afra Variegata



Tidal Wave Mix

Succulents

| |
|------------------------|
| Mega50 |
| Very popular |
| Drought resistant |
| Excellent shiny colors |



Collection



Aeonium Kiwi

upright, 2–6”



Chick Charms®
Sempervivum ‘Gold Nugget’ ppaf

upright, 2–6”

Chris Hansen



Echeveria Brown Sugar

upright, 2–6”



Echeveria Perle von Nurnberg

upright, 2–6”



Echeveria Topsy Turvy

upright, 2–6”

Dipladenia Madinia

| | |
|--|---------|
| Mega50 | Pinched |
| Large tropical showy flowers | |
| Best when grown under warm conditions and full sun | |
| Ideal for trellised pots or baskets | |

Syngenta



Coral Pink
upright, 12–14"



Deep Red
upright, 12–14"



Pink
upright, 12–14"

Mandevilla

| | |
|---|---------|
| Mega50 | Pinched |
| Big luscious pink blooms contrast with glossy green foliage | |
| Best when grown under warm conditions and full sun | |
| Ideal for trellised pots or baskets | |

Collection



Alice DuPont
trailing/climbing, up to 64"

Manettia

| | |
|---|---------|
| 51 | Pinched |
| Enjoy blooms summer through fall with this vigorous climber | |
| Plants can be trained on a trellis or hang from a basket, and do best in full sun | |
| Popular for the bright orange-yellow flowers (approximately 1") | |

Collection



Candy Corn Vine
trailing/climbing, up to 32"

Muelenbeckia axillaris

| |
|---|
| 51 |
| Twining growth with dark leaves and thick stems |

Collection



Creeping Wire Vine
trailing/climbing, up to 32"

Solanum jasminoides

| | |
|--|---------|
| 51 | Pinched |
| Floriferous, fast and easy grower | |
| Attractive foliage and white flowers | |
| Drought-tolerant, grows best in full sun | |

Collection



Yellow Zebra
trailing, 12–16"

Thunbergia-vegetative

| |
|---|
| 51 |
| Black Eyed Susan blooms from spring to fall |
| Ideal for trellises and hanging baskets |

Collection



Lemon Yellow
climbing, up to 48"



Orange
climbing, up to 48"



Red
climbing, up to 48"

SUMMER + FALL LINER PROGRAMS

MUMS + ASTERS

April - September | Week 16 - 37

Look for our Mum Catalog Fall 2018!

- Offering a diverse selection from the worlds best; Gediflora, Syngenta, and Dummen Orange
- Choose from 3 different tray sizes: 51 tray, mega50, and our Lil Liners.
- Includes all of your favorite fall accents such as Celosia 'Intenz' and Rubrum Grass



PREMIUM PANSY PLUGS

June - October | Week 26 - 43

Pansies and viola's offered
in a 288 and 128 tray

- Our well-branched plugs are finished outdoors by taking advantage of our cool Michigan nights, high light, and steady wind
- Strong root systems
- Proven growing track record with very few claims



FALL SEEDLINGS

June - October | Week 26 - 43

Does your fall program require more than just mums and asters?
Our fall seedling program includes more than 5 great items in a 128 and/or 288 tray!

- Pansy & Viola Standard | 128 and 288 tray
- Pansy Cool Wave | 128 and 288 tray
- Snapdragons | 128 and 288 tray
- Cabbage and Kale Standard | 128 and 288 tray
- Glamour Kale | 128 and 288 tray
- Dracaena Spike - Our spike plugs are all multiseeded and are in a 288 tray sold as a 250



POINSETTIAS

July - September | Week 27 - 37

Now offering genetics from Syngenta, Selecta, Dummen Orange (Ecke Primary, Ecke Deluxe, Red Fox, and Ice Crystal), and we're proud to introduce six new varieties from Beekenkamp!



Drop and Replacement List 2018

| Dropped | Replacement | Dropped | Replacement |
|--|---|---|---------------------------------|
| Angelonia Alonia Big Violet | Angelonia Alonia Purple | Geranium continued Zonal Rocky Mountain Royal Red | Rocky Mountain Magenta |
| Argyranthemum Butterfly | Beauty Yellow | Zonal Tango Deep Red | Tango Dark Red |
| Asteriscus Aurelia Yellow | None | Zonal Tango Deep Pink | Tango Hot Pink |
| Begonia Eliator Baladin | Valentine Red | Zonal Tango Light Pink | Tango Rose Splash |
| Eliator Barkos (dark red) | Valentine Red | Zonal Tango Velvet Red | Tango Dark Red |
| Eliator Berseba (dark pink) | Dragone Dusty Rose | Gerbera Midl Eyecatcher Purple | Revolution Bicolor Mix |
| Exotic Bonfire Orange | Bossa Nova Orange | Revolution Terra Cotta | None |
| Exotic Mistral Pink | Bossa Nova Pink Glow | Revolution Bicolor Yellow Orange | None |
| Exotic Mistral Yellow | Bossa Nova Yellow | Revolution Bicolor Red Lemon | Revolution Bicolor Mix |
| Hybrid Megawatt Red Bronze Leaf | None | Helichrysium Icicles | Silver Threads |
| Hybrid Megawatt Red Green Leaf | Begonia Hybrid Red with Green Leaf | Impatiens Interspecific Bounce Bright Coral | Bounce Cherry |
| Hybrid Megawatt Rose Bronze Leaf | Begonia Hybrid Rose with Bronze Leaf | New Guinea Sonic Mango | Sonic Salmon |
| Tuberous OnTop Pink Hal | None | New Guinea Sonic Sweet Red | None |
| Calibrachoa Aloha Kona Mango | Aloha Kona Honeycomb | New Guinea Sunstanding Coral Aurora | SunPatens Coral Pink |
| Bloomtastic Serenity | Blue Quartz | New Guinea Sunstanding Fire Red | SunPatens Fire Red |
| Calitastic Indigo | None | New Guinea Sunstanding Hot Pink | SunPatens Pink |
| Callie Gold with Red Eye | Callie Mango | New Guinea Sunstanding Lavender | SunPatens Lilac |
| Lindura Cosmos Hot Pink | Starshine Pink | New Guinea Sunstanding Light Lavender Aurora | SunPatens Blush pink |
| Lindura Cosmos Strawberry | Candy Shop Candy Crush | New Guinea Sunstanding Light Pink Aurora | SunPatens Lilac |
| MiniFamous Compact Compact Dark Blue | MiniFamous Uno Blue | New Guinea Sunstanding Magenta | SunPatens Royal Magenta |
| MiniFamous Compact Compact Dark Red | MiniFamous Uno Red | New Guinea Sunstanding Neon Red | SunPatens Fire Red |
| MiniFamous Compact Compact Purple | MiniFamous Uno Pink | New Guinea Sunstanding Neon Rose | SunPatens Deep Rose |
| MiniFamous Compact Compact Safran 17 | MiniFamous Uno Blue | New Guinea Sunstanding Orange Aurora | SunPatens Electric Orange |
| MiniFamous Compact Compact White 16 | MiniFamous Uno Yellow | New Guinea Sunstanding Rose Aurora | SunPatens Royal Magenta |
| MiniFamous Double Double Silver Blue | MiniFamous Neo Double Silver Blue | New Guinea Sunstanding Salmon | SunPatens Coral Pink |
| MiniFamous Double Compact | MiniFamous Uno Pink | SunPatens Spreading Carmine Red G/L | SunPatens Spreading Scarlet Red |
| MiniFamous Double Compact | MiniFamous Uno Pink | SunPatens Spreading Lavender G/L | SunPatens Orchid |
| Double Compact Pink | MiniFamous Uno Pink | SunPatens Spreading Scarlet Red G/L | SunPatens Fire Red |
| MiniFamous Double Compact | MiniFamous Uno Double Compact Rose Chai | Lantana Bandana Landscape Lemon Zest | Bandana Yellow |
| Double Compact Rose Chai | MiniFamous Neo Light Pink +Eye | Leucanthemum Goldfinch | None |
| MiniFamous Neo Salmon + Pink Eye | MiniFamous Neo Vampire | Victorian Secret | Lancaster Double Angel Daisy |
| MiniFamous Neo Cherry Red | MiniFamous Neo Light Blue | Lobelia Hot Snow White | Magadi Basket White |
| MiniFamous Neo Lavender Blue | Noa Red | None | Magadi Basket Electric Blue |
| Noa Raspberry | Starshine Apricot | Nemesia Nesia Banana Punch | Nesia Sunshine |
| Starshine Cherry | MiniFamous Uno Pink Star | Oregano Ornamental Kingam | None |
| Calocephalus Bed Head | None | Osteospermum 4D Dark Violet + White | Osteospermum 4D Berry White |
| Coleus Main Street Abbey Road | None | 4D Sunburst | None |
| Main Street Michigan Ave | None | 4D Pink | None |
| Main Street Dutch Mill Drive | None | 4D Purple 18 | 4D Dark Violet + White |
| Standard Alabama | None | 4D Violet Ice | Osteospermum 4D Silver |
| Standard Defiance | Main Street Oxford Street | 4D Violet Ice | None |
| Standard Fishnet Stockings | Main Street Rodeo Drive | Crescendo Yellow | Ostica Pink Imp. |
| Standard Kings Wood Torch | Main Street Ocean Drive | Margarita Lilac | Ostica Bronze |
| Standard Roaring Fire | None | Ostica Magma | Glamour Yellow |
| Standard Watermelon | Main Street Fifth Avenue | Ostica Pineapple | Margarita Orange Flare |
| Trailing Gnash Rambler | None | Zon Magic Orange | |
| Trailing Tell Tale Heart | Great Falls Niagara | Pentas Starcluster Appleblossom | Starcluster Pink |
| Trailing Trailing Plum | Great Falls Iguaazu | Petchoa SuperCal Purple | Petchoa SuperCal Bordeaux |
| Trailing Wedding Train | Great Falls Angel | Salmon Glow | Petchoa SuperCal Sunray Pink |
| Combo Mixers Bee Fabulous | None | Light Yellow | Petchoa SuperCal Caramel Yellow |
| Bee Ifuful | None | Terra Cotta | Petchoa SuperCal Cinnamon |
| Combo, Mast Fusion: Coleus Mix Tropical Bird Mix | None | Petunia Headliner White | Ray White |
| Combos Confetti Garden Glossy Sunset | None | Main Stage Blueberry | Purple Vein Ray |
| Confetti Garden Hawaiian Hoku Star | None | Main Stage Hot Pink | Sanguna Burgundy |
| Confetti Garden Hawaiian Pink Infusion | None | Main Stage Light Blue | Surprise Blue Sky |
| Confetti Garden Ruby Slippers | None | Main Stage Pink (was Famous Pink) | Sanguna Sweet Pink |
| Confetti Garden Spring Break | None | Main Stage Pink Vein | Sanguna Pink Vein |
| Confetti Garden Water Colours | None | Main Stage Purple (was Famous Purple) | Sanguna Burgundy |
| Kwik Kombos Blue Breeze Mix | None | Main Stage Red (was Famous Firestorm) | Headliner Red |
| Kwik Kombos Effortless Beauty Mix | None | Main Stage Violet | Sanguna Blue |
| Kwik Kombos Mom's Chosen One Mix | None | Main Stage Violet Picotee | Surprise Magenta Halo |
| Kwik Kombos Pink Patio Mix | None | (was Famous Violet Picotee) | White Ray |
| Kwik Kombos Sangria and Sunsets Mix | None | Main Stage White | Peppy Pink |
| Kwik Kombos The Red Carpet Mix | None | Peppy Cerise | Peppy Pink |
| Kwik Kombos World's Fair Mix | None | Peppy Purple | Starlet Blue |
| Trixi Cajun Flare | None | Potunia Cobalt Blue | Potunia Plus Denim |
| Trixi Double Delight | None | Potunia Plus Neon 2017 | Potunia Cherish |
| Trixi Firfiri | None | Potunia Plus Strawberry Ice 2018 | Sanguna Lipstick Imp. |
| Trixi Treasure Chest | None | Premium Constellation Aries | Headliner Pink Sky |
| Trixi Twinkle Star | None | Premium Constellation Gemini | None |
| Trixi Walk on a Cloud | None | Premium Constellation Virgo | Headliner Night Sky |
| Trixi Wild Berry | None | Premium Surfinia Summer Double Salmon | None |
| Dahlia Large Dahlinova Hypnotica Gold | Dahlia Large Dahlinova Hypnotica Yellow | Premium Surfinia Sumo Glacial Pink | Sanguna Pink Vein |
| Dahlinova Hypnotica Pink Improved | Dahlia Large Dahlinova Hypnotica Lavender | Ray Blue Ray | Starlet Blue |
| Dahlinova Hypnotica Purple Bicolor | Dahlia Large Dahlinova Hypnotica Purple Bicolor | Sanguna Pato Blue Vein | Dekko Sky Blue |
| Dahlinova Hypnotica White Improved | None | Sanguna Pato Blue Vein | Patio Radiant Rose |
| Dahlinova Hypnotica Bronze Bicolor | Dahlia Large Dahlinova Hypnotica Orange | Sanguna Pato Pink Morn | Patio Radiant Rose |
| Dalaya Pink+Lemon (was Shari) | None | Starlet Salmon Red Vein | Sanguna Pink Vein |
| Dalaya Pink+Rose Eye (was Yogi) | None | Surprise Purple Ice | Purple Vein Ray |
| Dalaya Red+White | None | Surprise Purple Dance | Potunia Purple Halo |
| Dalaya Yellow+Red Eye (was Shiva) | None | Surprise White Orchid | Sanguna Pink Vein |
| Grandahlia Rose | Dahlia Large Grandahlia Dark Pink | Sweetunia Pink Lemonade | Sweetunia Hot Pink Lemonade |
| Grandahlia Sunrise | None | Sweetunia Purple Touch 2017 | Sweetunia Pink Touch |
| XXL Alamos | Dahlia Large XXL Taxco | Sweetunia Rose Shimmer | Pink Halo Ray |
| XXL Hidalgo | Dahlia Large XXL Sunset | Phlox Gisele Light Pink | Gisele Pink |
| Dianthus Dianthalot Dark Red+Star | Dianthus Rockin Red | White | None |
| Pink+Star | None | Portulaca Pazzaz Red Flare | None |
| Dipladenia Madinia Hot Pink | Coral Pink | Sagina Subulata Silver Drop | None |
| Eucalyptus Hot Pink | None | Scotch Moss | Irish Moss |
| Evolvulus Blue Daze | None | Salvia farinacea Candle Cobalt | Candle Midnight |
| Fuchsia Bellinto Compact Red + Violet | Fuchsia Corabells Dark Eyes | Scaevola Fairy Blue | Bombay Dark Blue Imp. |
| Compact Red + White | Fuchsia Corabells Red + White | Stachys Lilac Falls | None |
| Red + Blue | Fuchsia Corabells Rose + Purple | Succulent Sedum Tokyo Sun | None |
| Red + White | Fuchsia Corabells Red + White | Verbena BeBop Lavender | Lanai Twister Purple |
| Gaura Little Janie | None | BeBop Pink | Lanai Twister Pink |
| Geranium Ivy Contessa Pink | Geranium Ivy Contessa Lavender | Blues Magenta + Eye | Blues Red |
| Ivy Great Balls of Fire Melon | Geranium Ivy Great Balls of Fire Merlot | Blues Purple + Eye | Lanai Royal Purple + Eye |
| Novelty Brocade Fire | Brocade Fire Night | Blues Rose + Eye | Blues Light Pink + Eye |
| Novelty Brocade Mrs. Pollack | None | Blues Violet + Eye | Blues Lavender + Eye |
| Regal Elegance Appleblossom | Geranium Regal Elegance Royalty White | Blues Dark Violet | Lanai Royal Purple + Eye |
| Zonal Classic Pink | Americana Pink | Empress Flair Dark Purple Charme | BeBop Purple + Eye |
| Zonal Classic Red | Americana Red | Empress Flair Dark Red Charme | Empress Flair Cherry Charme |
| Zonal Classic Salmon | Americana Salmon | Empress Flair Neon | Empress Flair Pink Charme |
| Zonal Fidelity Dark Red | Americana Dark Red | Lanai Neon Rose | Lanai Deep Pink |
| Zonal Maestro Idols Coral | Rocky Mountain Orange | Lanai Scarlet with Eye | Lanai Early Dark Red |
| Zonal Maestro Idols Light Pink Parfait | Rocky Mountain Light Pink | Lanai Twister Amethyst | Lanai Twister Purple |
| Zonal Maestro Idols Pink Parfait | Rocky Mountain Deep Rose | Lanai Twister Purple | Lanai Dark Red |
| Zonal Maestro Idols Sassy Dark Red | Rocky Mountain Dark Red | Lanai Twister Purple | Empress Flair Burgundy |
| Zonal Maestro Idols Violaceae | Rocky Mountain Violet | Lanai Twister Purple | Blues Neon |
| Zonal Maestro Idols White 2016 | Rocky Mountain White | Lanai Twister Purple | Lanai Deep Pink |
| Zonal Patriot Soft Pink | Rocky Mountain Light Pink | Lanai Twister Purple | Lanai Black Velvet |
| Zonal Patriot Cranberry Red | Patriot Bright Red | Lanai Twister Purple | |
| Zonal Patriot Papaya | Patriot Bright Violet | Lanai Twister Purple | |
| Zonal Patriot Salmon Frills | Patriot Evening Glow | Lanai Twister Purple | |

Plant Index

| * green text indicates new items | | | |
|--|----------------|--|-------------------|
| Acalypha Agastache <i>Sunrise</i> TM | 10 127 | Coleus Premium Party Time Terra Nova® | 33 33 |
| Ageratum Aguilera | 10 | Coleus Trailing Great Falls | 34 |
| Aiuga Alternanthera | 129 10 | Combos Confetti Garden TM Kwik Kombos TM | 105 109 |
| Angelonia Alonia TM | 11 | <i>Mast Fusion</i> SunPatens® | 102 104 |
| Angelos® | 11 | Trixi® | 114 |
| Carita TM | 11 | Cordylne Coreopsis | 35 |
| Carita TM Cascade | 11 | <i>Grandiflora</i> Solanna TM | 129 129 |
| Argyranthemum Beauty Sassy® | 12 12 | Uptick | 129 |
| Asparagus Fern | 12 | Croton Atlas TM | 8 |
| Bacopa Calypso TM | 13 | Cuphea FloriGlory® | 13 |
| Scopia® | 13 | Mexicana (Violet) | 35 |
| Basil Herbalea Red Ball | 125 | Cymbopogon citratus Lemon Grass | |
| Begonia Eliator <i>Fragrant Falls</i> <i>I'Conia</i> | 14 14 16 | Cyperus Crown of Pharoah Baby Moses | 122 122 |
| Solenia® | 16 | Dahlia Large Dahlinova Hypnotica® | 36 |
| Begonia Exotic Bossa Nova | 14 | Grandahlia TM | 37 |
| Gryphon | 14 | XXL | 37 |
| Begonia Hybrid BIG TM | 15 | Dahlia Dahlinova® | 38 |
| Dragon Wing® | 15 | Goldalia TM | 39 |
| <i>Tophat</i> TM | 15 | Starsister® | 39 |
| Begonia Tuberous Nonstop® | 17 | <i>Temptation</i> <i>Delosperma</i> <i>Delmara</i> TM | 39 127 |
| Nonstop® Mocca | 17 | Dianthus Jolt | 40 |
| OnTop® | 17 | Kahori® | 129 |
| Bidens Beedance TM | 18 | Oscar® | 130 |
| Beezar! TM | 18 | Rockin Red | 129 |
| Bidy Bop | 18 | <i>Constant Beauty</i> <i>Constant Cadence</i> <i>Constant Promise</i> | 127 127 127 |
| Bidy | 18 | Super Trouper TM | 130 |
| Blazing Fire | 19 | Diascia Darla® | 40 |
| Mexican Gold TM | 19 | Dichondra Dipladenia | 41 |
| Namid TM | 19 | Madinia | 140 |
| Popstar | 18 | Dorotheanthus Mezoo TM | 41 |
| Pretty in Pink | 18 | Dracaena Mohave TM | 41 |
| White Delight | 18 | indivisa Spike (green) | 41 |
| Boston Fern Brachyscome | 8 and 121 | marginata | 121 |
| Fresco TM | 19 | Duranta Mohave TM | 41 |
| Cottage | 19 | Echinacea Cheyenne Spirit | 131 |
| Mohave TM | 19 | PowWow | 131 |
| Buddleia <i>Leah</i> TM | 127 | Euphorbia Calynopsis TM | 41 |
| Calceolaria Calynopsis TM | 20 | Euphoric TM | 41 |
| Calendula Caleo TM | 20 | Glitz | 41 |
| Calibrachoa Aloha Kona | 21 | Star Dust | 41 |
| Aloha Nani | 22 | Fuchsia <i>Corabells</i> | 43 |
| Bloomtastic | 22 | Standard | 42 |
| <i>Cabrio</i> TM | 23 | Variegated Leaf | 43 |
| Calipetite TM | 23 | Gailardia Lunar TM | 127 |
| Calitastic | 24 | Gaura Callie® | 131 |
| Callie® | 25 | Belleza TM | 127 |
| Candy Shop Candy Bouquet® | 26 | <i>Bantam</i> TM | 127 |
| Candy Shop Candy Crush TM | 26 | Geranium Interspecific Caliente® | 44 |
| Chameleon® | 26 | Calliope® Medium | 46 |
| MiniFamous TM Double | 28 | Calliope® Large | 45 |
| <i>MiniFamous</i> TM Uno | 29 | <i>Moxie</i> TM | 47 |
| MiniFamous TM Neo | 27 | Pretty Little TM | 50 |
| Noa® | 30 | Skywalker Canna | 20 |
| Canna | 31 | Cascade TM | 48 |
| Cannova® | 31 | Contessa TM | 48 |
| Carex Cassia | 123 | Freestyle® | 49 |
| Popcorn | 31 | Great Balls of Fire | 49 |
| Catharanthus Vinca Soiree Kawaii | 32 | Temprano TM | 49 |
| Celosia Dragon's Breath | 32 | Geranium Regal Elegance | 9 |
| Intenz | 32 | Geranium Zonal Americana® | 51 |
| Chlorophytum Spider Plant | 120 | Classic TM | 52 |
| Cleome Clio TM | 32 | Novelty Brocade | 123 |
| Coleus Combo Mix | 103 | Patrio TM | 51 |
| Main Street | 33 | Rocky Mountain TM | 53 |
| Standard | 34 | Tango TM | 54 |
| | | Gerbera Cartwheel® | 55 |
| | | Mega Revolution TM | 55 |
| | | Revolution TM | 55 |
| | | Gomphrena Pinball | 55 |
| | | Hedera Ivy Helichrysrum | 132 56 |
| | | Heliotrope Marino TM | 56 |
| | | Scentropia | 56 |
| | | Heuchera <i>Hypoestes</i> | 132 |
| | | Splash | 56 |
| | | Splash Mix | 56 |
| | | Impatiens Double Silhouette® | 57 |
| | | Impatiens Interspecific Bounce TM | 57 |
| | | Impatiens New Guinea Magnum | 58 |
| | | Sonic® | 59 |
| | | <i>Sunstanding Apollo</i> <i>Sunstanding Helios</i> | 60 60 |
| | | Super Sonic® | 61 |
| | | Impatiens SunPatens® Compact | 62 |
| | | Vigorous | 63 |
| | | Ipomoea Bright Lights | 64 |
| | | Sidekick TM | 65 |
| | | Standard | 64 |
| | | Isotoma <i>Fizz N Pop</i> TM | 65 |
| | | Isolepis Juncus | 123 |
| | | Blue Arrow | 123 |
| | | Spiralis | 123 |
| | | Lamium Lami TM | 134 |
| | | Standard | 134 |
| | | Lantana Bandana® | 66 |
| | | Bandana® Landscape | 67 |
| | | Basket Santana TM | 67 |
| | | <i>Havana</i> Standard | 67 |
| | | Lavender Aromatico TM | 125 and 134 |
| | | Leucanthemum <i>Angel Daisy</i> | 127 |
| | | <i>Sweet Daisy</i> | 135 |
| | | White Mountain | 127 |
| | | Lobelia <i>Giga</i> TM | 127 |
| | | Magadi TM | 68 |
| | | Techno® | 69 |
| | | Techno® Heat | 69 |
| | | Techno® Heat Upright | 69 |
| | | Lobularia Stream TM | 70 |
| | | Yolo | 70 |
| | | Lophospermum Lofos® Compact | 70 |
| | | Lysimachia congestiflora | 70 |
| | | nummularia | 70 |
| | | Mandevilla Alice DuPont | 140 |
| | | Dundee | 9 |
| | | Manettia Mecardonia | 141 |
| | | Magic Carpet TM | 71 |
| | | Monarda <i>Marje</i> TM | 127 |
| | | Muehlenbeckia axillaris Creeping Wire Vine | 141 |
| | | Nemesia Babycakes | 71 |
| | | Nesia TM | 71 |
| | | Nepeta Walker's Low | 136 |
| | | Oregano 4D TM | 125 |
| | | Osteospermum Daisy Falls TM | 72 |
| | | Margarita® | 73 |
| | | Ostica TM | 73 |
| | | Oxalis Osticade TM | 74 |
| | | Tradewinds® | 74 |
| | | Zion TM | 74 |
| | | Penstemon Pennisetum | 98 |
| | | advena Fireworks | 100 |
| | | setaceum Rubrum | 101 |
| | | Skyrocket | 101 |
| | | Pentas Falling Star TM | 75 |
| | | Starcluster TM | 75 |
| | | Perilla Soiree Kawaii | 32 |
| | | Vinca major Vinca minor | 137 137 |



MAST
YOUNG PLANTS

6564 PEACH RIDGE AVE NW GRAND RAPIDS MI 49544

www.mastyoungplants.com

616-784-0583